



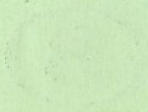
BOEKJE HLT  
Deel 12  
Hoofdstuk IX  
1<sup>e</sup> en 2<sup>e</sup> deel

# Elektrische Postmotorrijtuigen

---

figuren en schema's

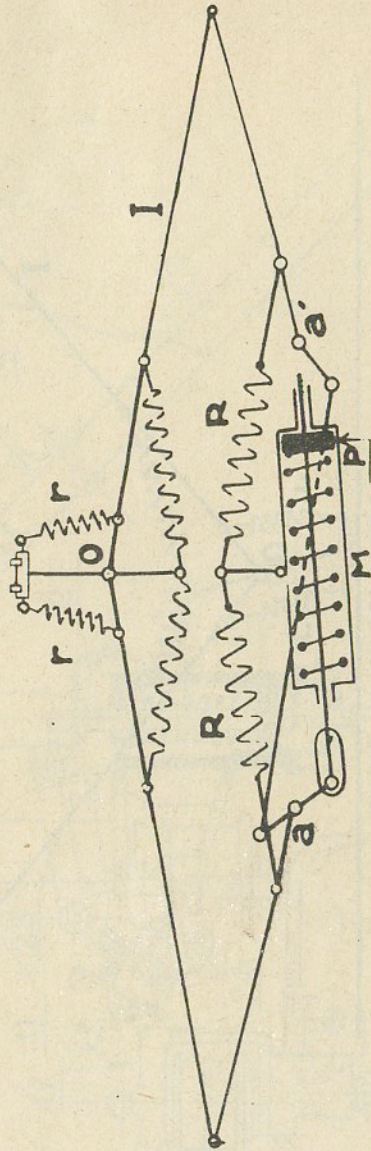
---



Faint, illegible text or markings in the upper left quadrant.

Faint, illegible text or markings in the middle right section.

Faint, illegible text or markings in the lower middle section.



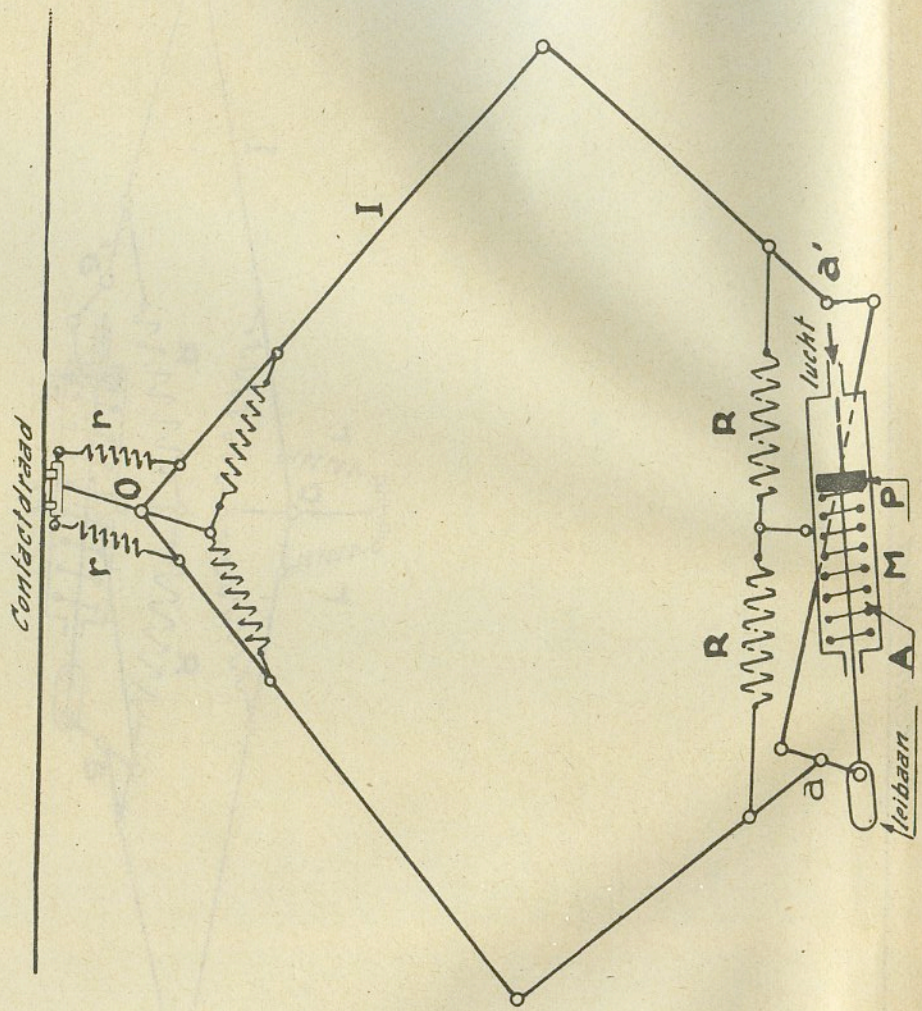


Fig. 2.

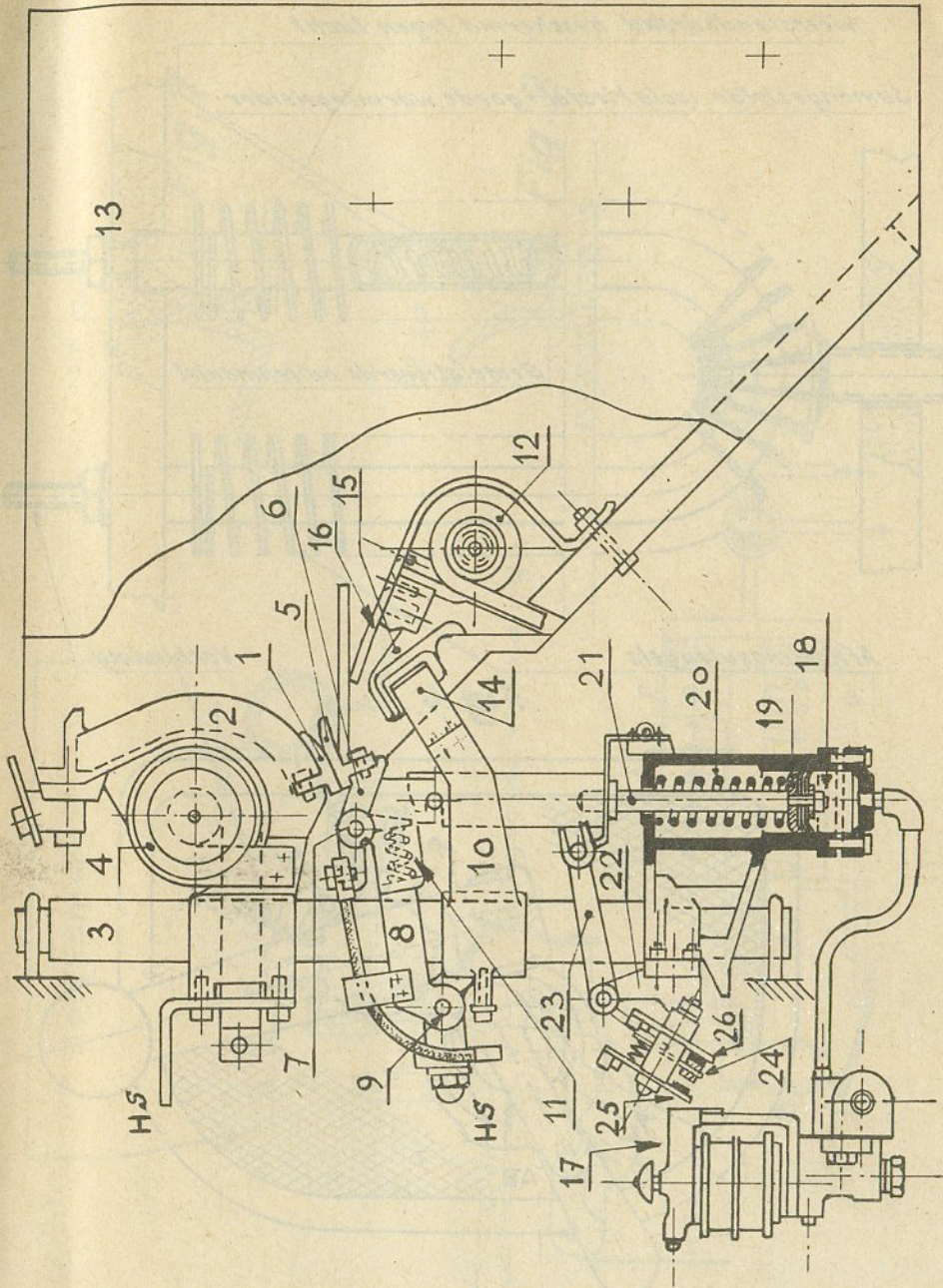


Fig. 3.

Weerstandsdraad beschermd tegen lucht

Samengestelde isolatiestof - goede warmtegeleider

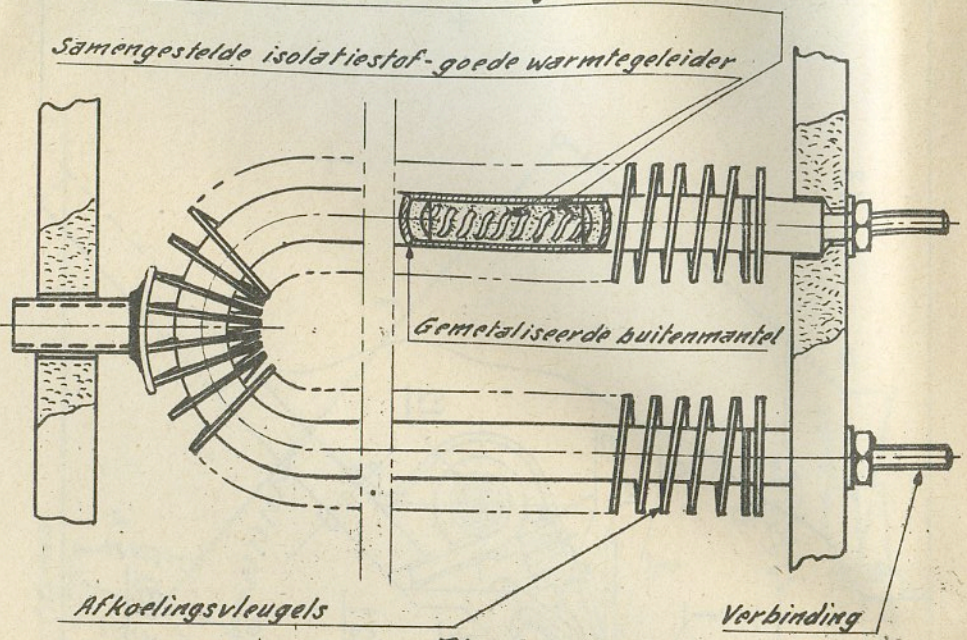


Fig. 4.

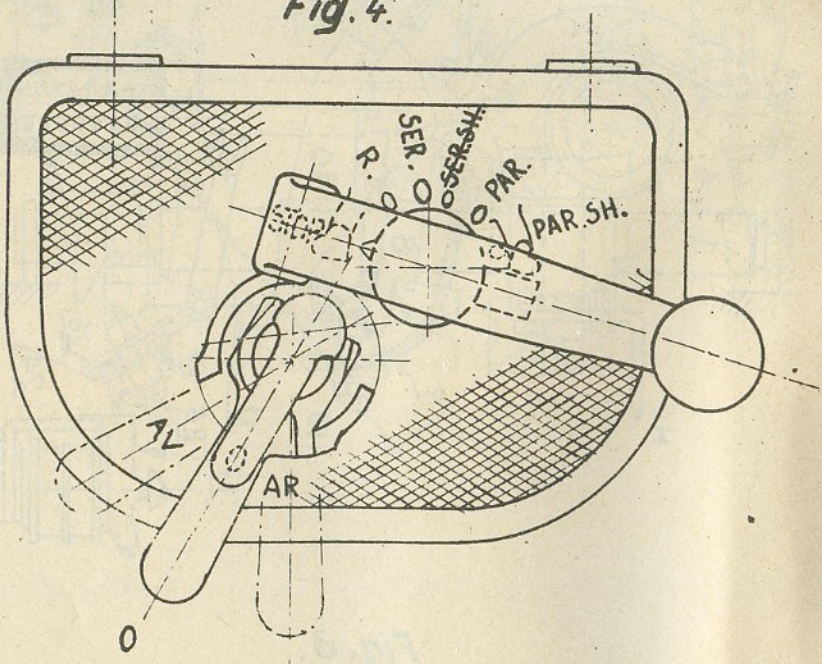


Fig. 5.

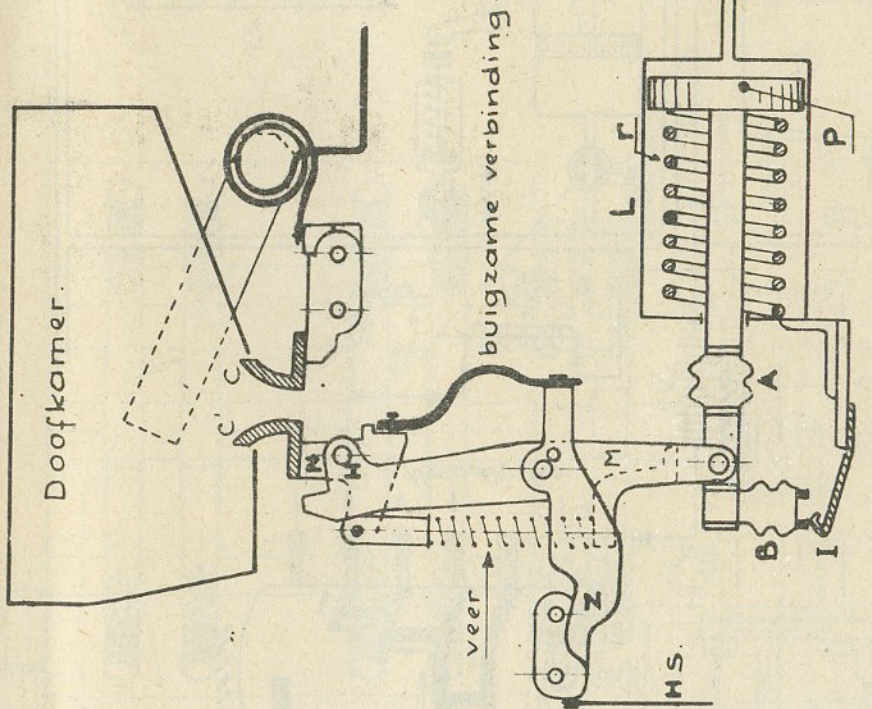


Fig. 6.

1ste fase

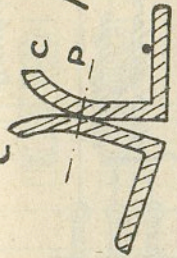


Fig. 7

2de fase

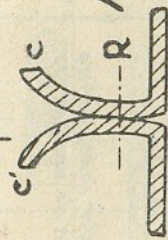


Fig. 8

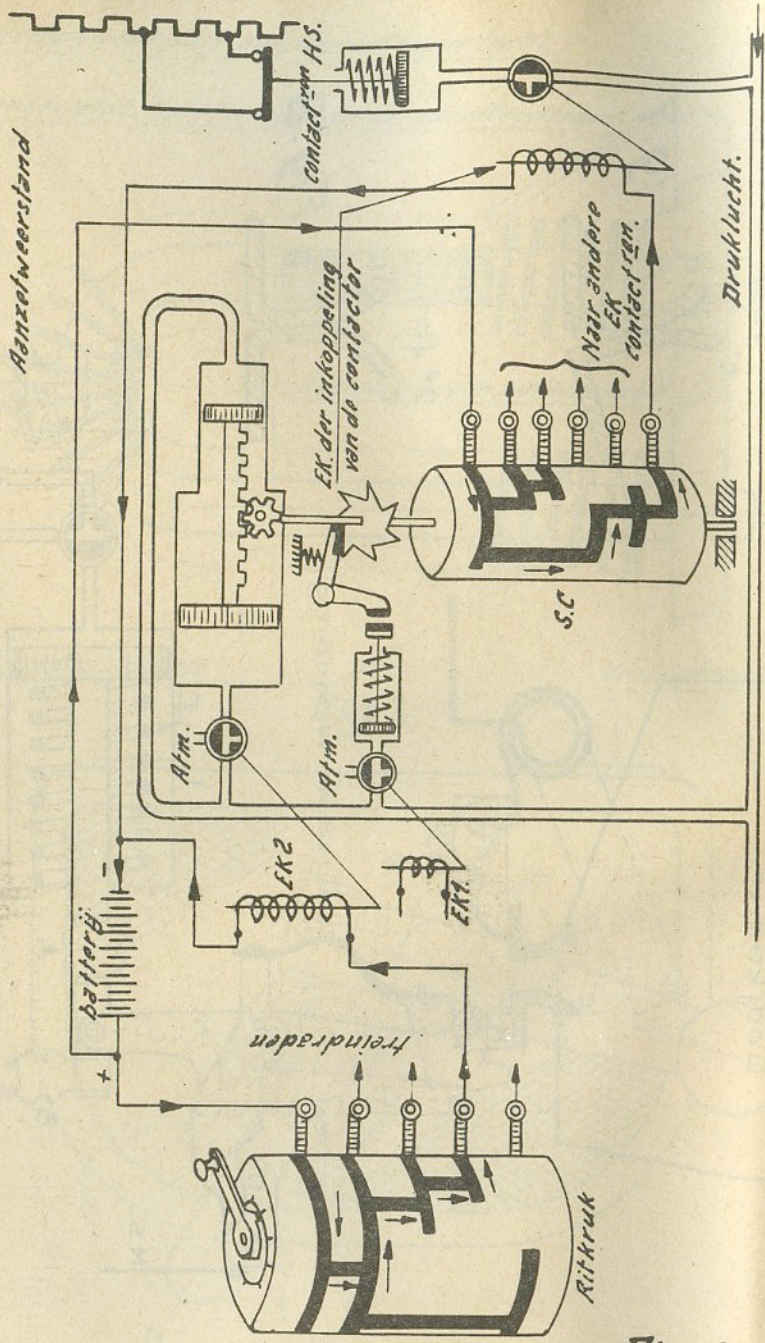


Fig: 9.



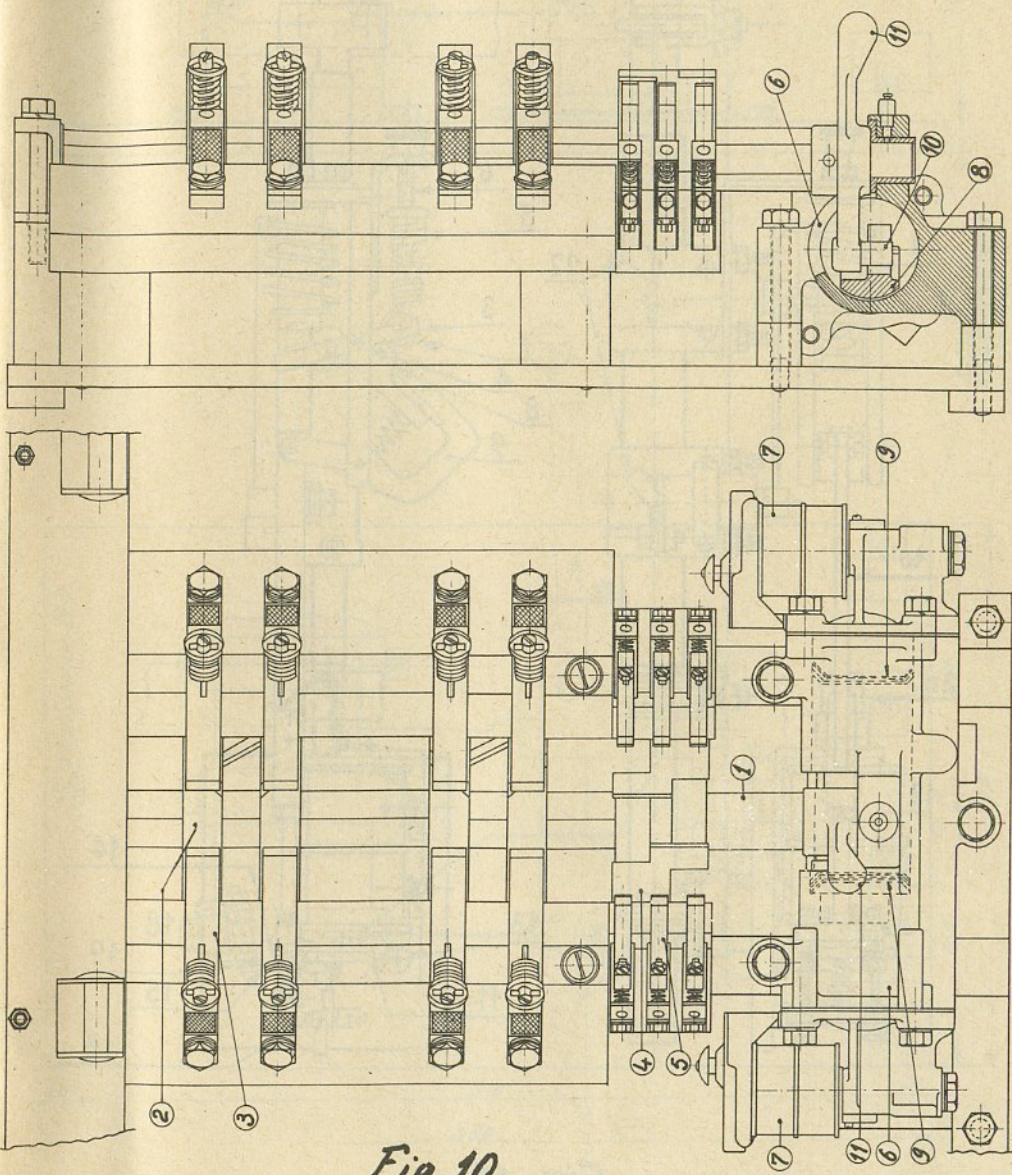


Fig. 10.

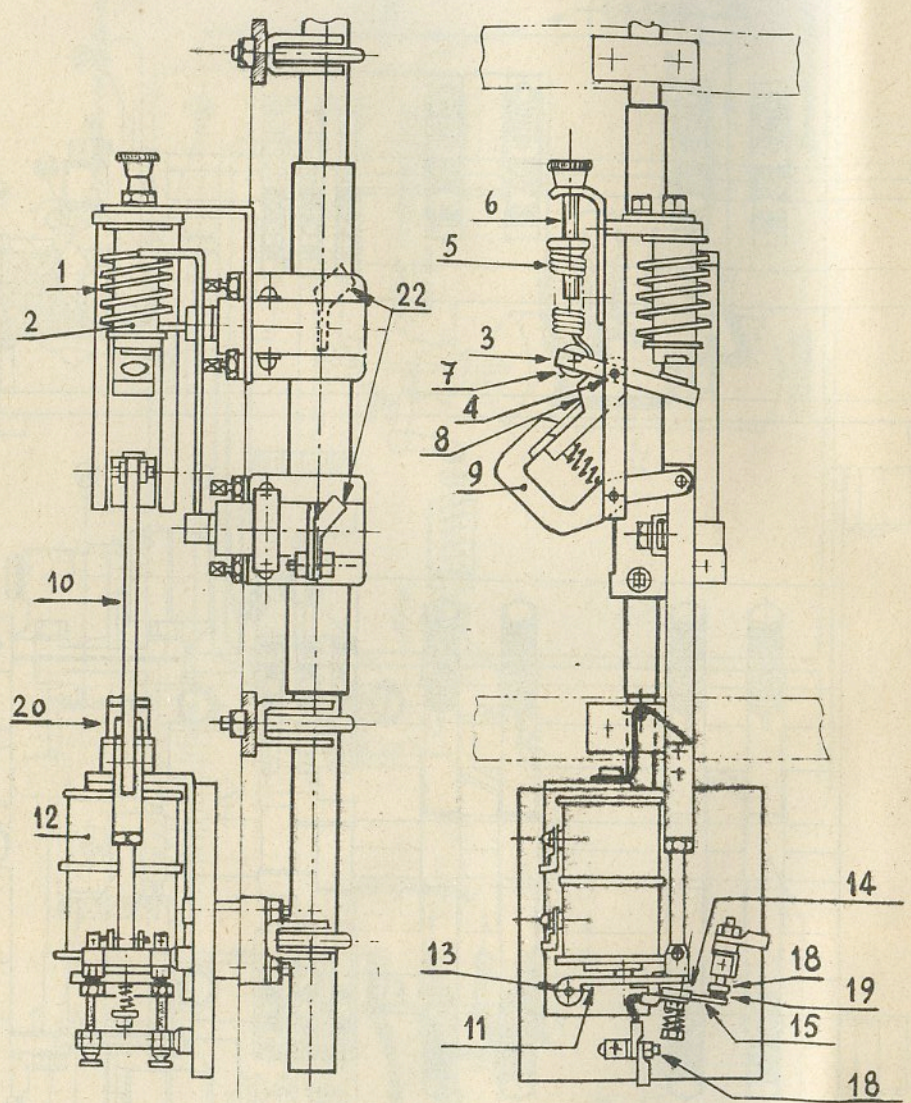
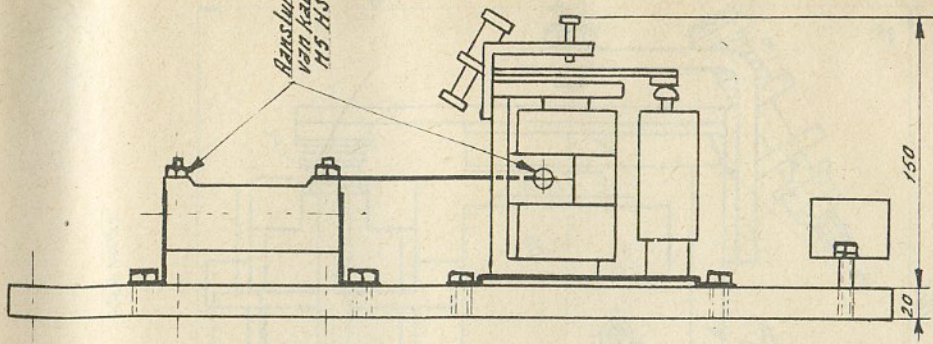


Fig. 11.

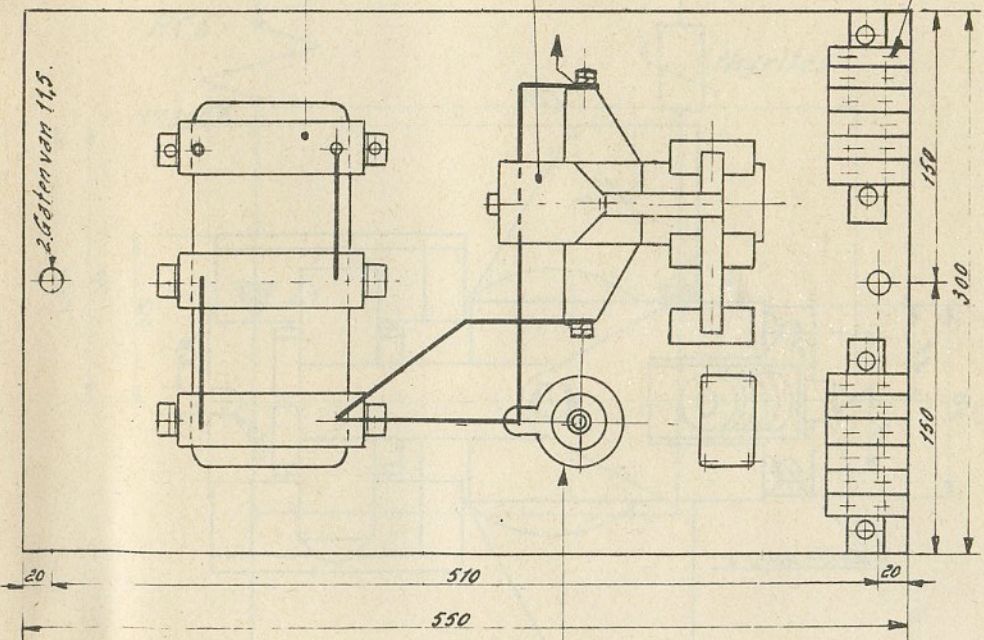
Aansluiting  
van kabelschak  
M5 115.



2

1

Aansluiting  
van kabelschak  
M4-25.



3

Fig. 12.

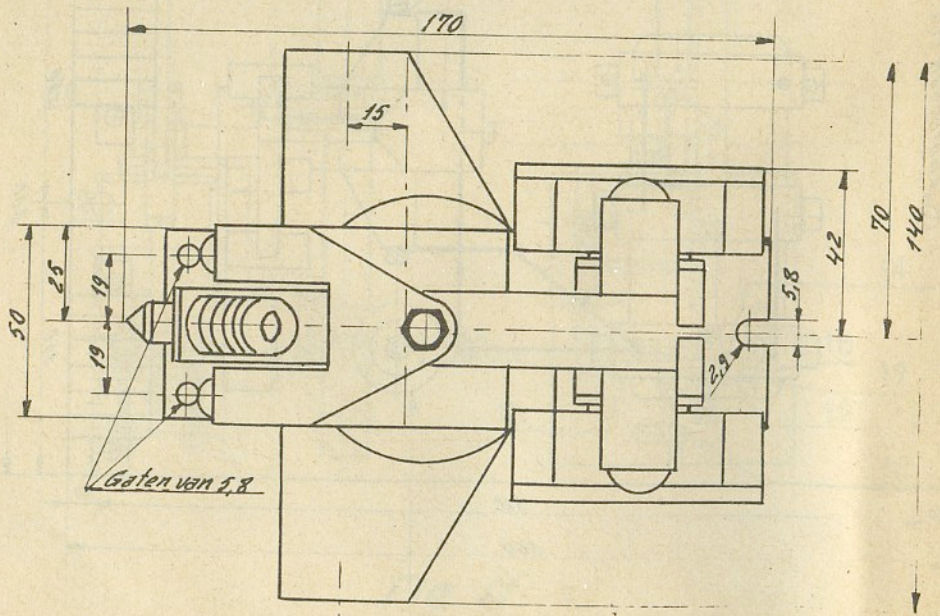
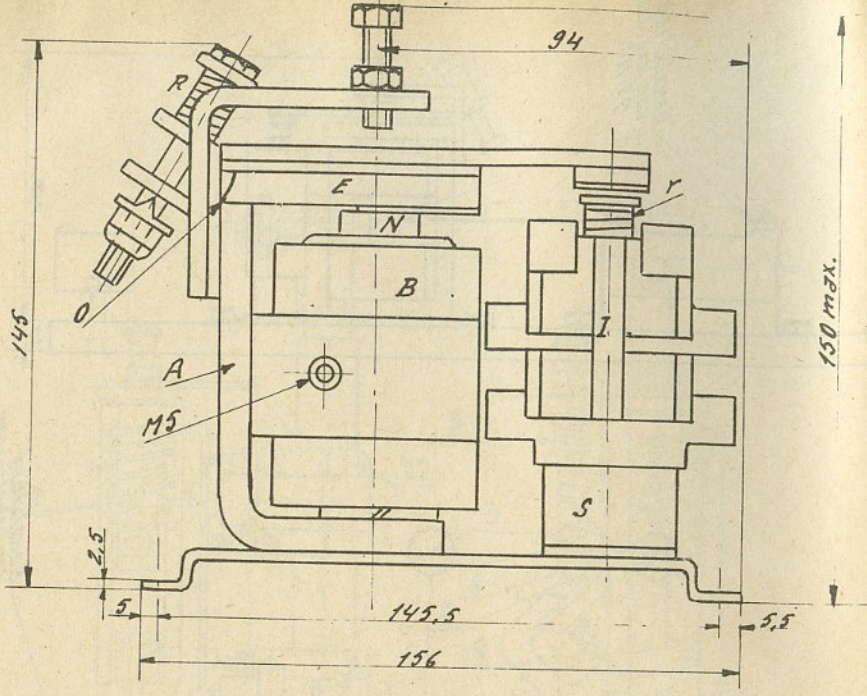


Fig. 13.

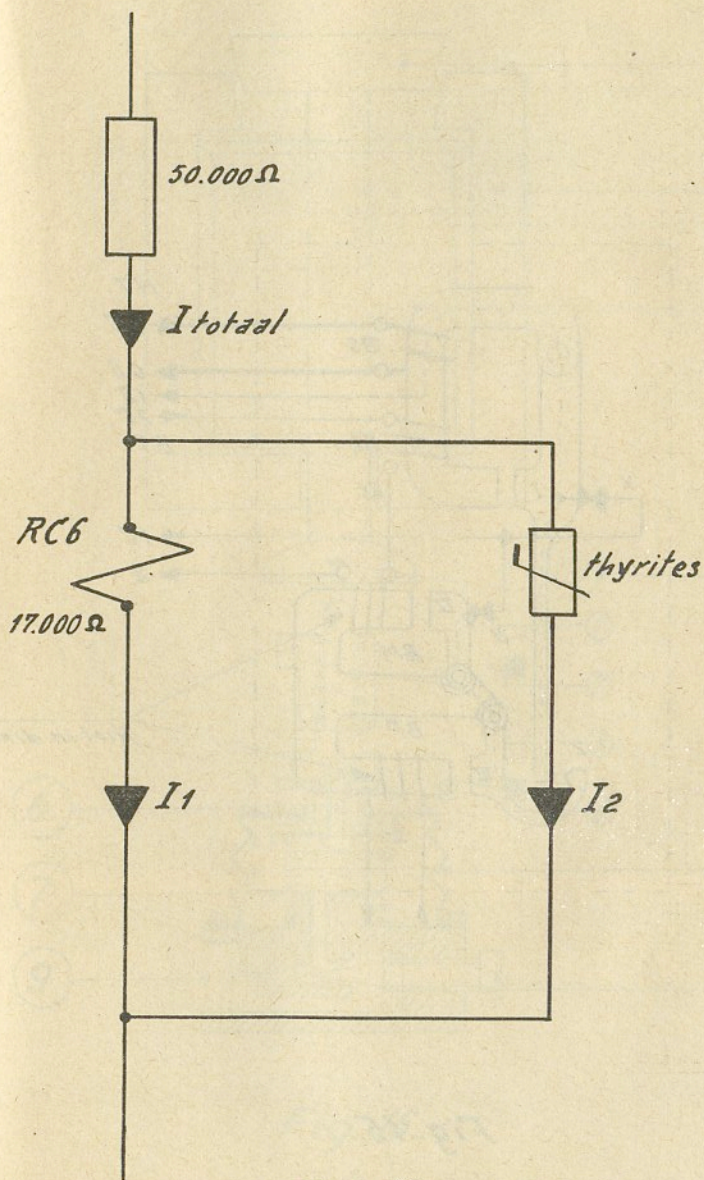


Fig. 14

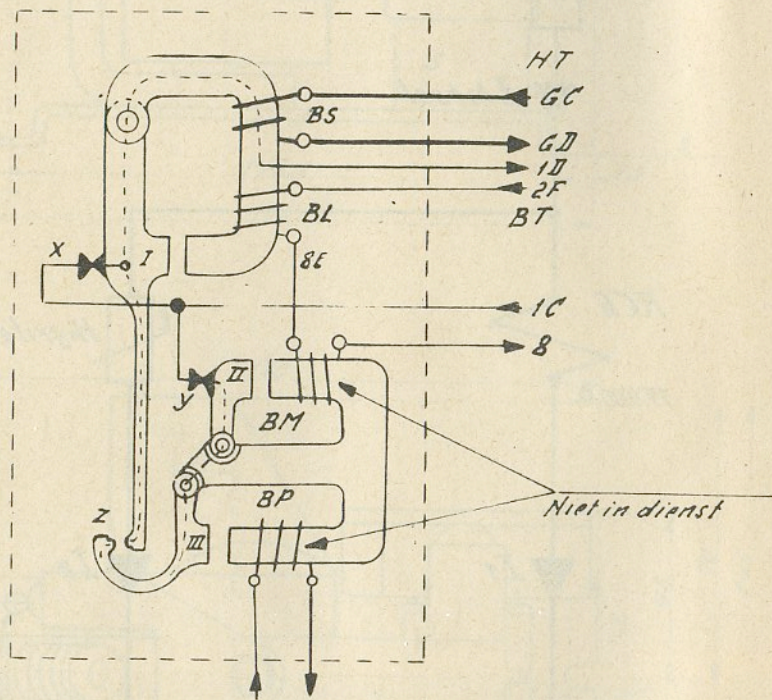


Fig. 15.

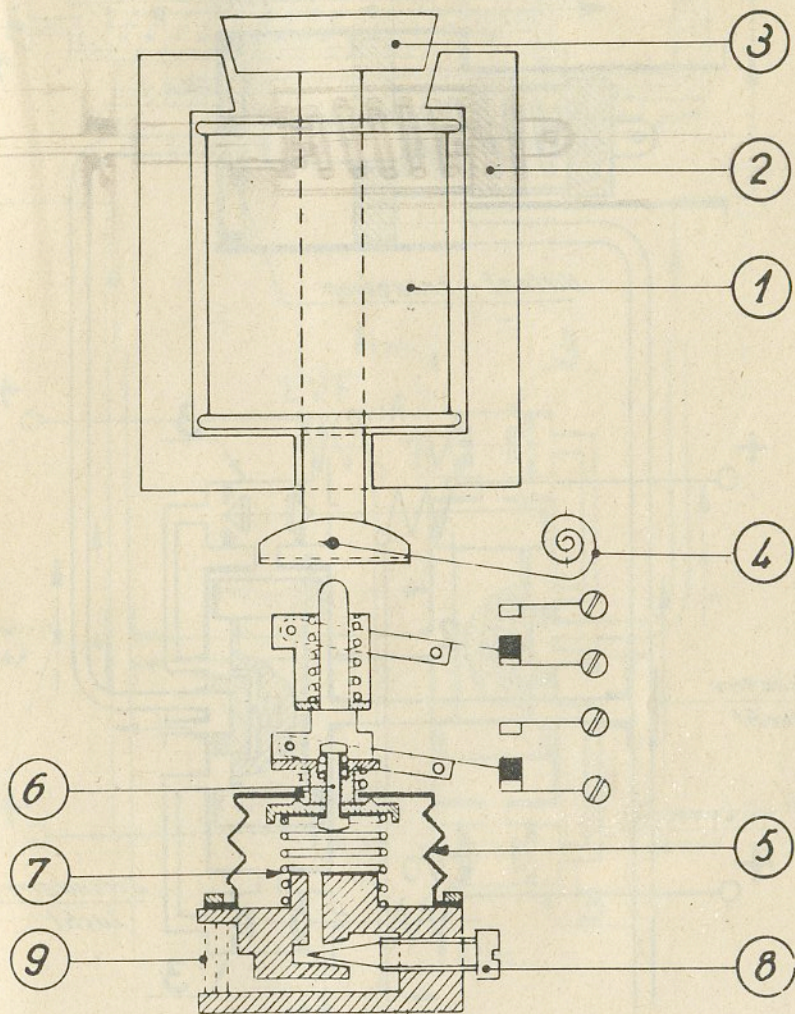


Fig. 16.

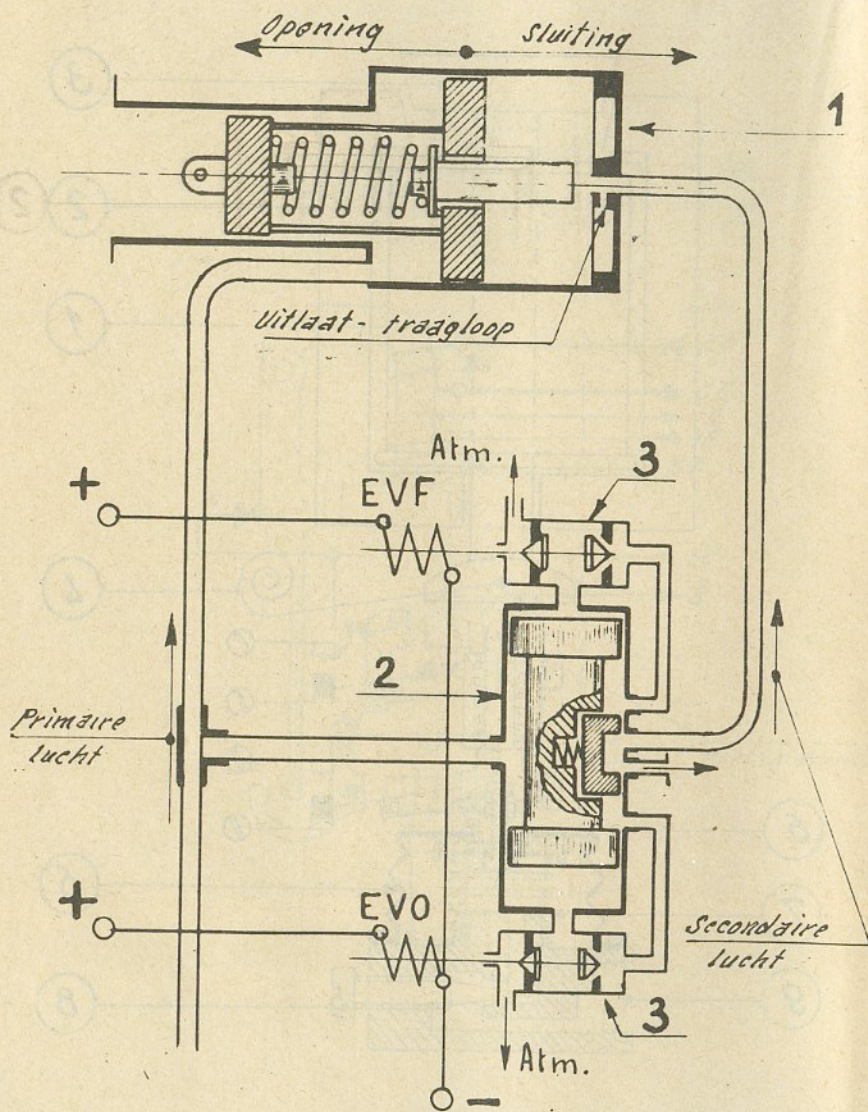


Fig. 17.



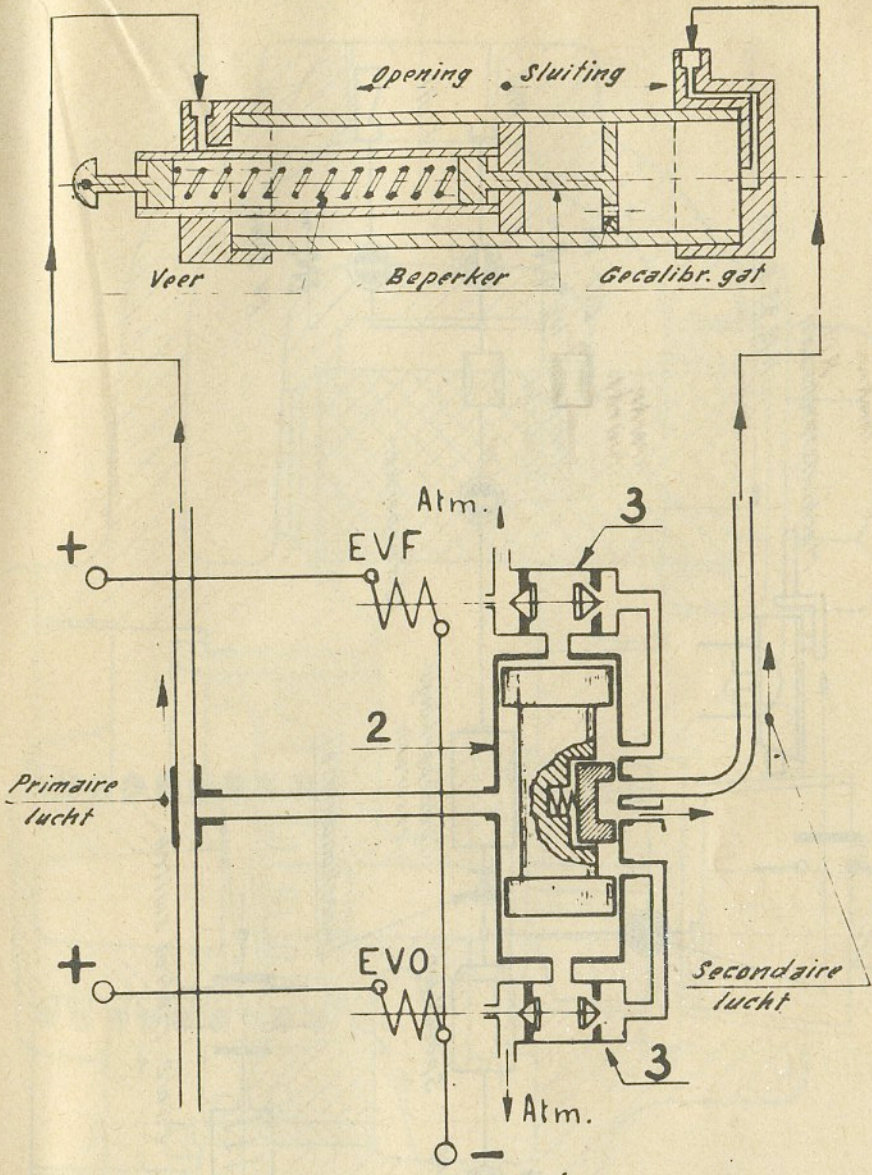


Fig. 17. bis.

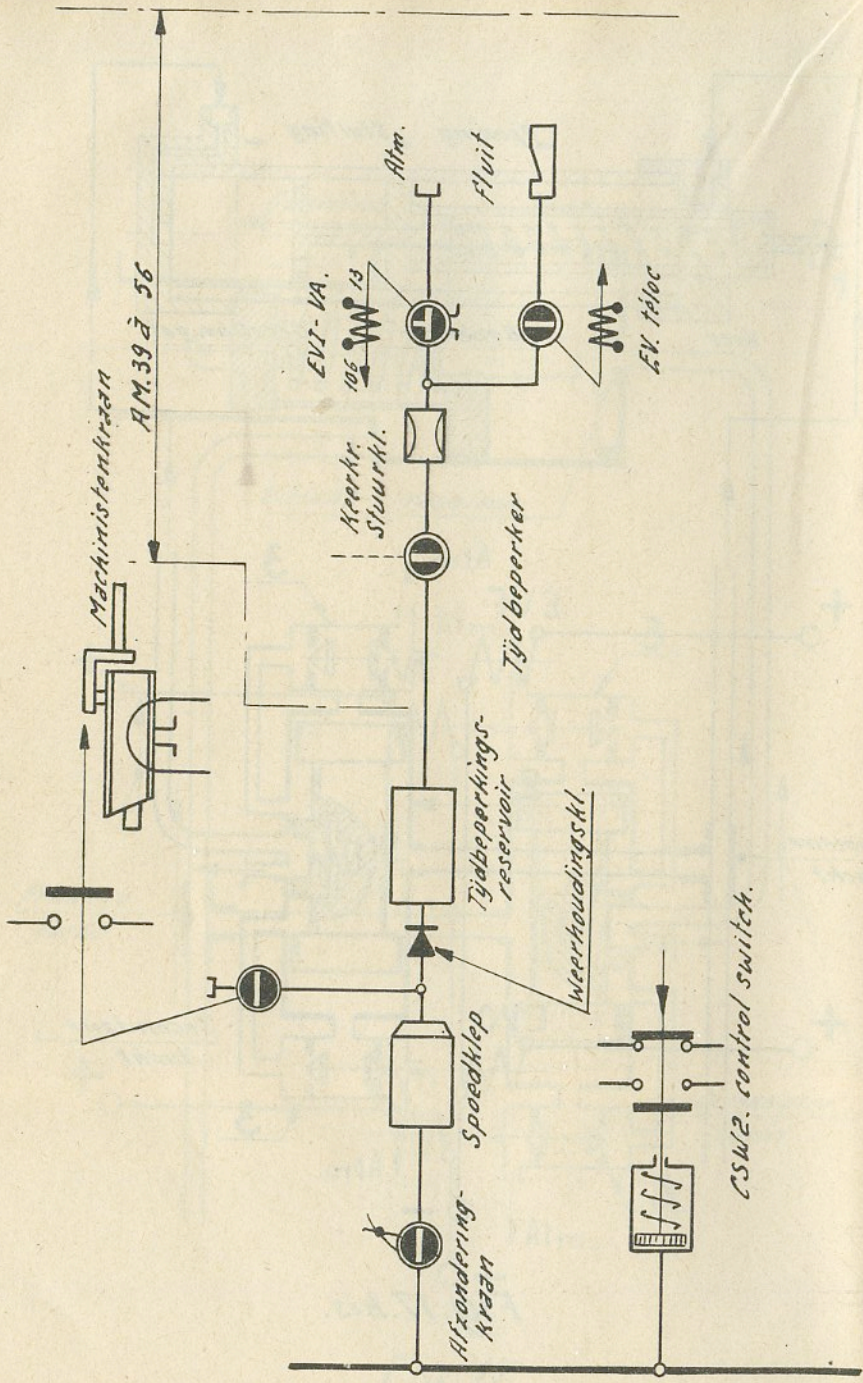


Fig. 18.

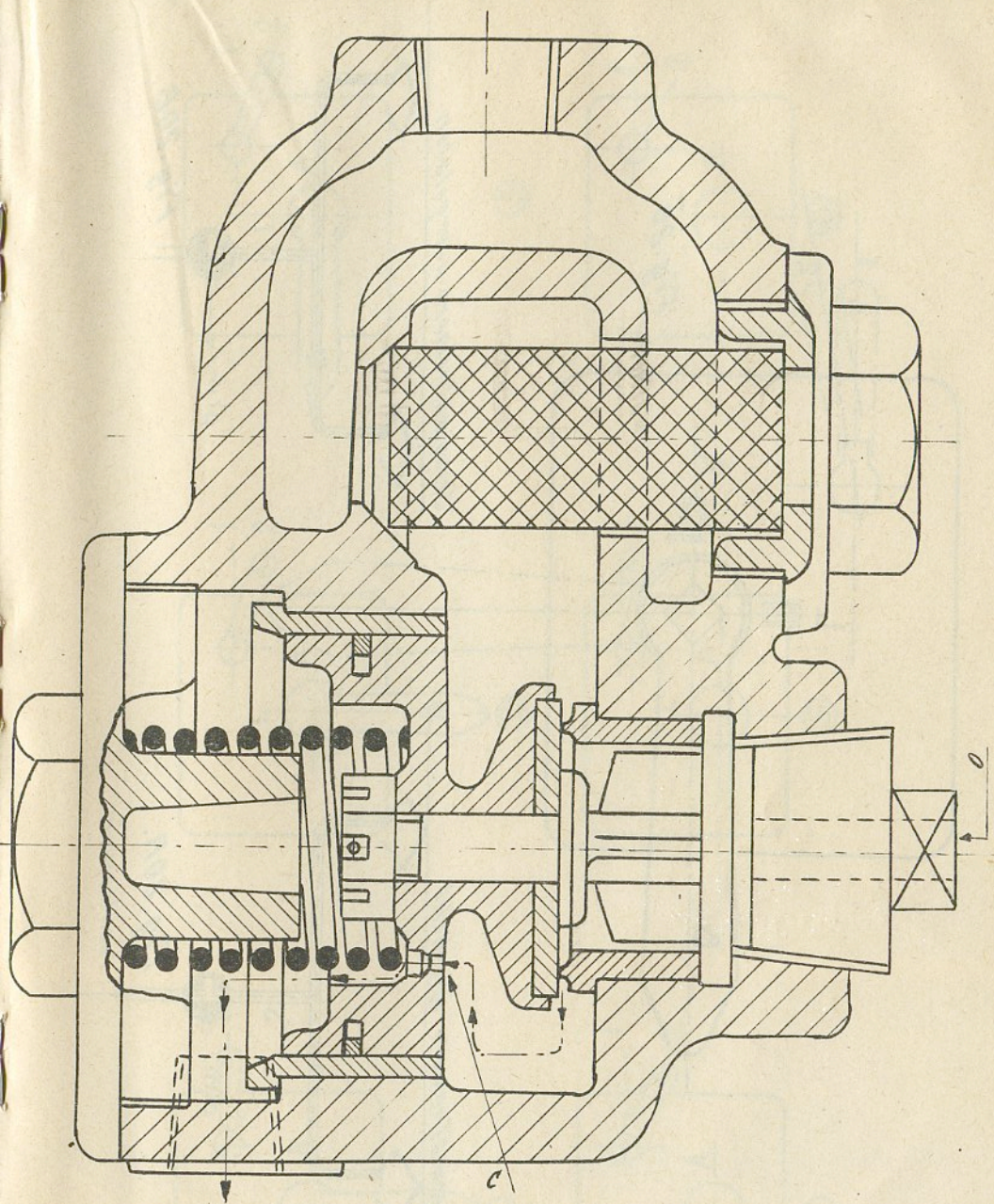


Fig. 19.

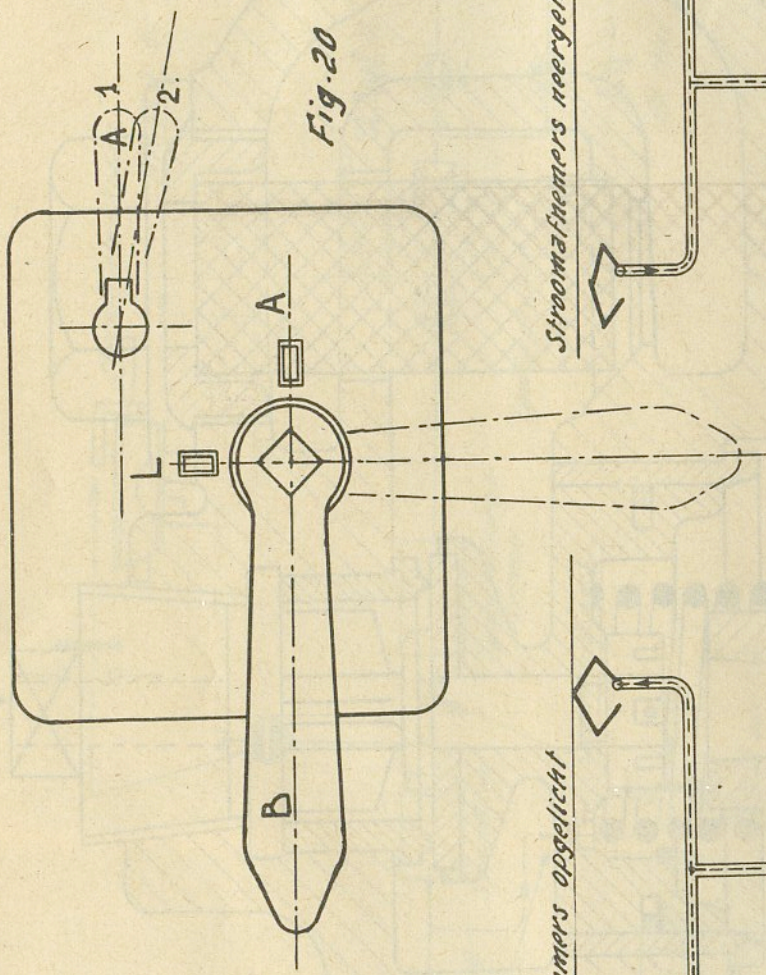


Fig. 20

*Stroomafnemers opgelicht*

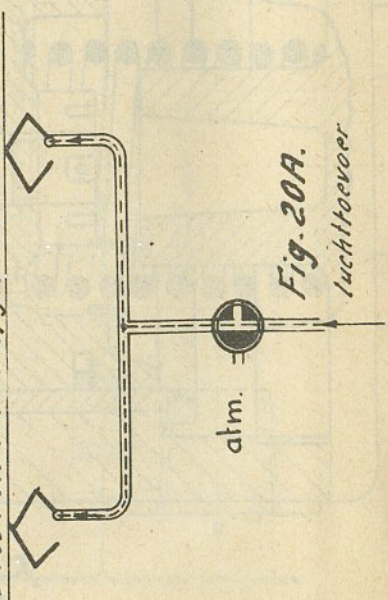


Fig. 20A.

*Stroomafnemers neergelaten*

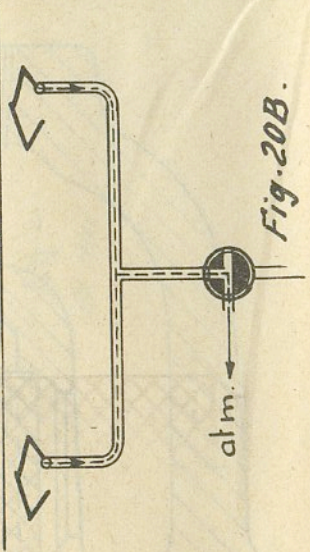
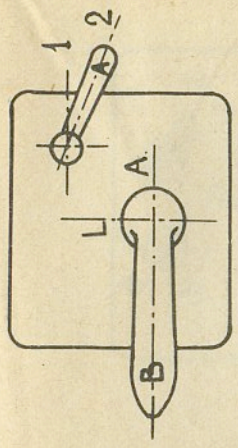


Fig. 20B.



③

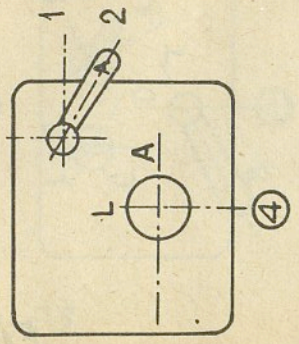
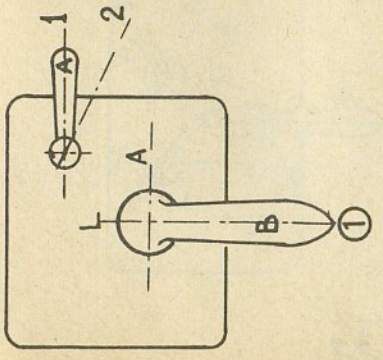
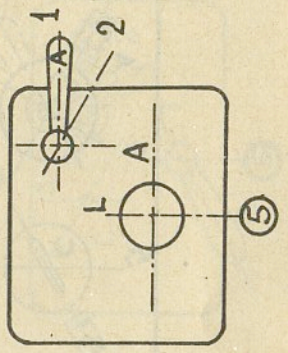
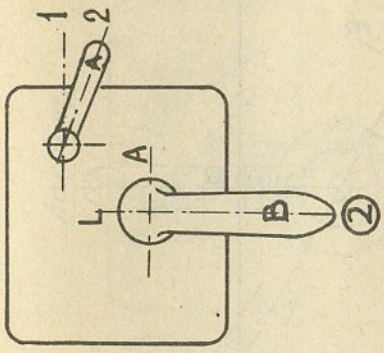
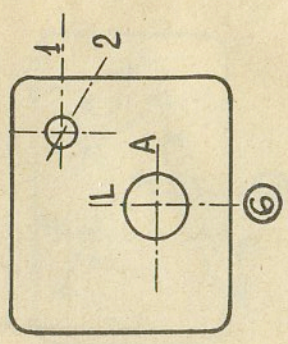


Fig. 21.

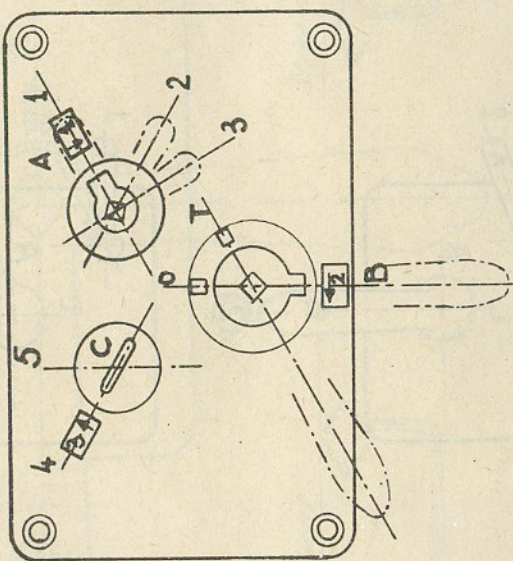


Fig. 22.

Aarding.

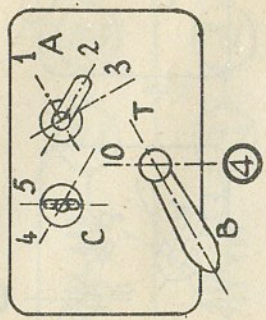
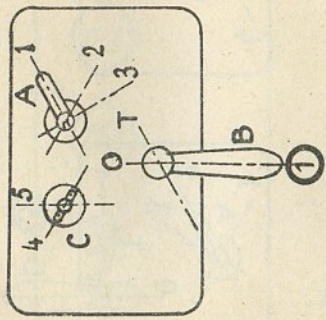
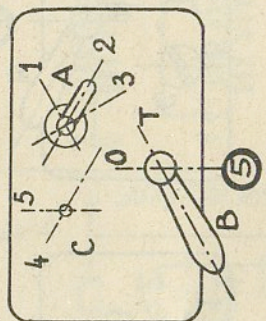
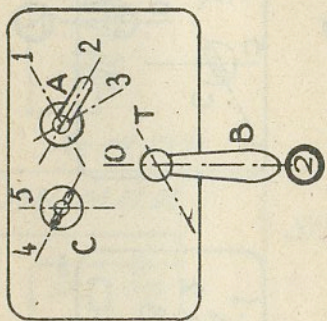
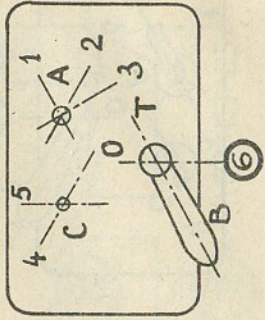
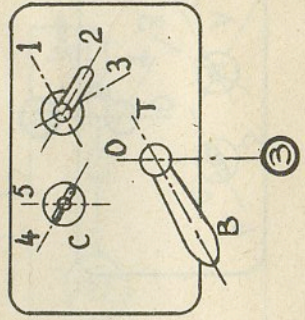


Fig. 23.

Terugplaatsing in normale stand.

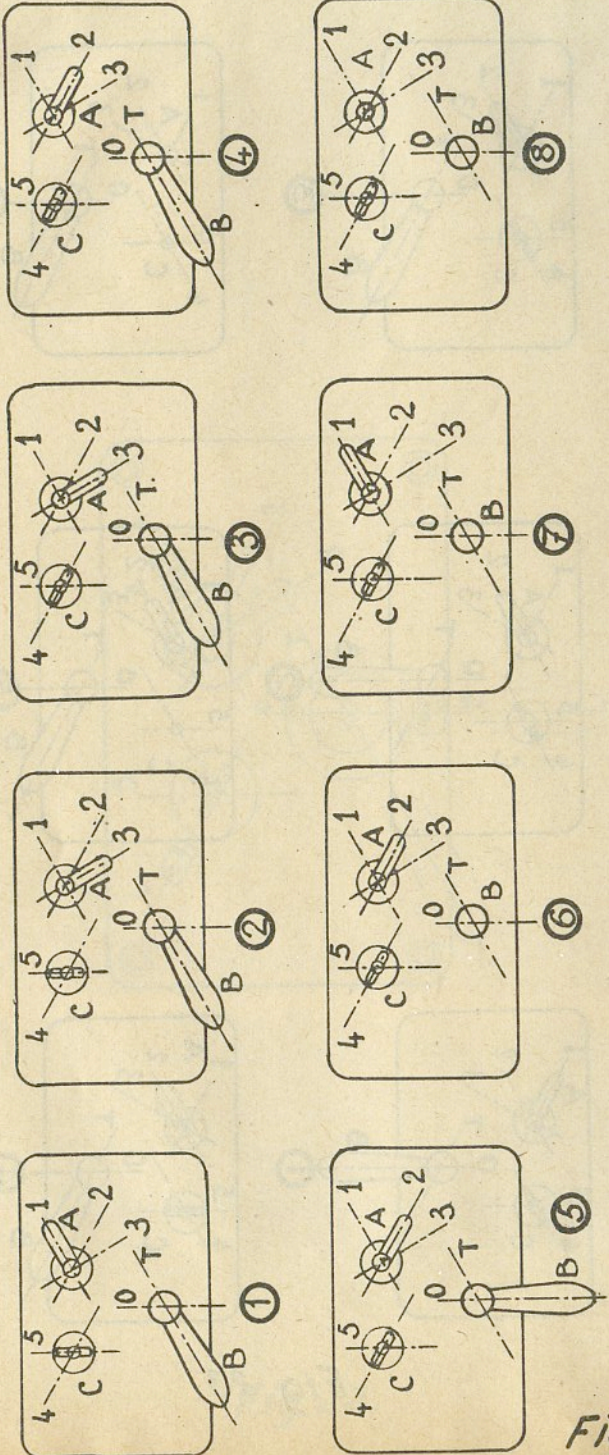
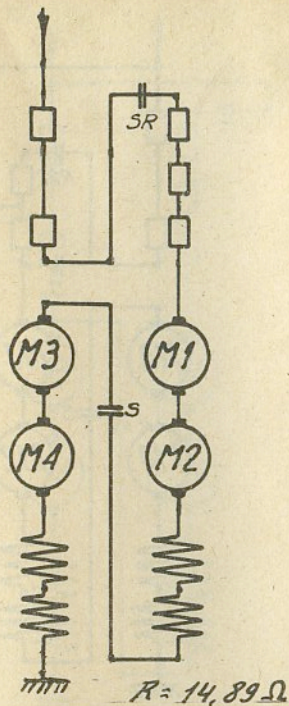


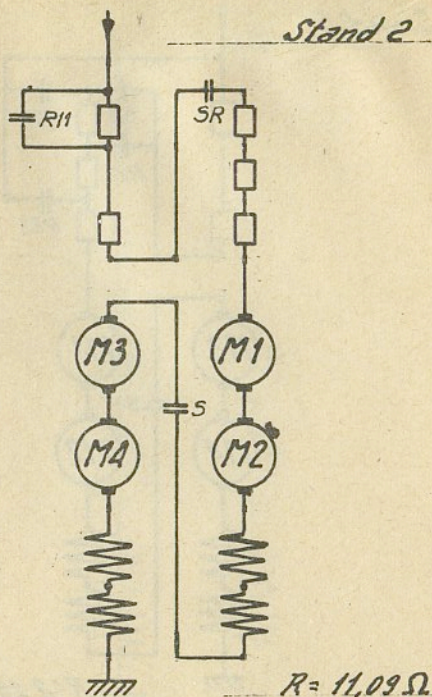
Fig. 24.



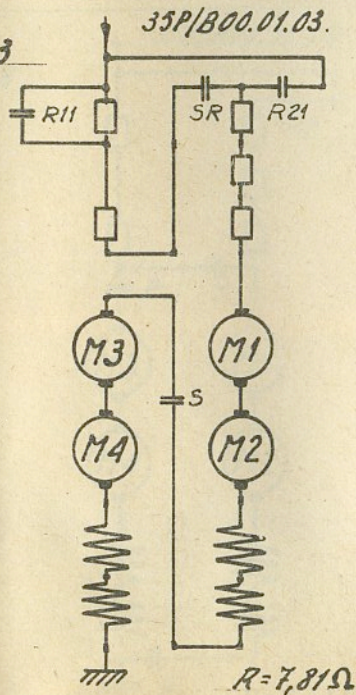
Stand 1



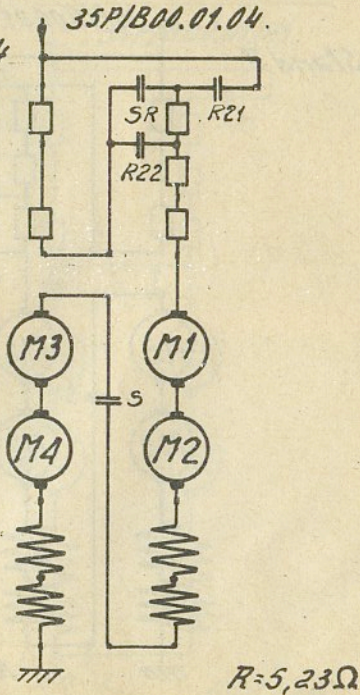
Stand 2



Stand 3



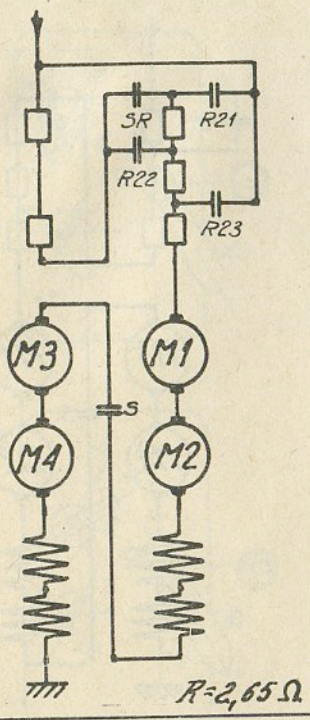
Stand 4



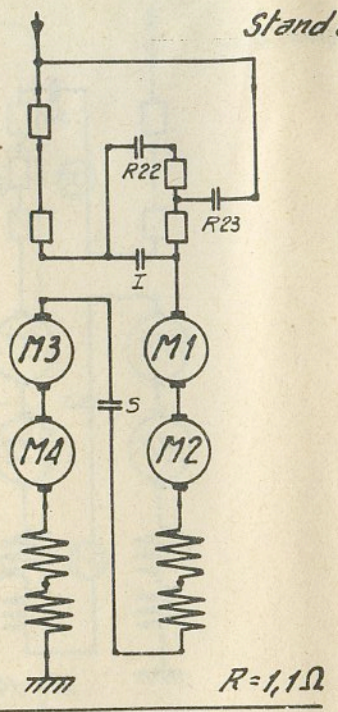
35P/B.00.01.05.

35P/B00.01.06.

Stand 5

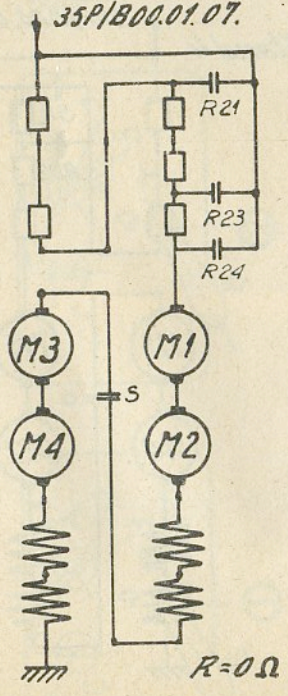


Stand 6

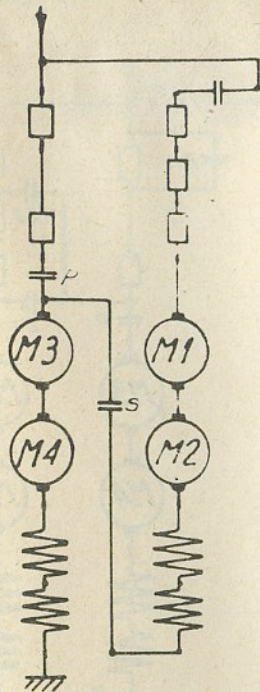


35P/B00.01.07.

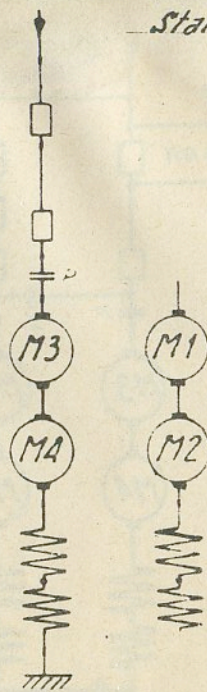
Stand 7.



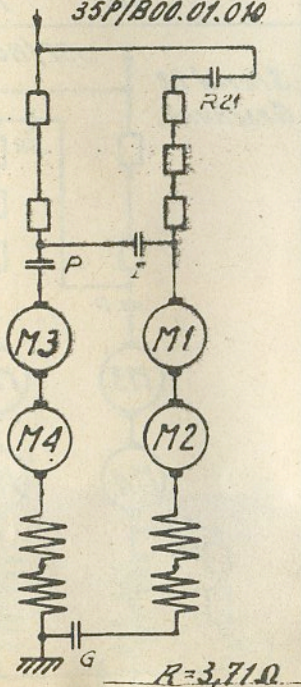
Stand T1



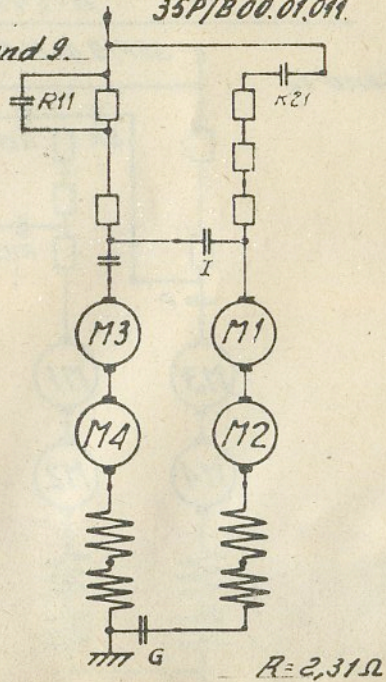
Stand T2



Stand 8



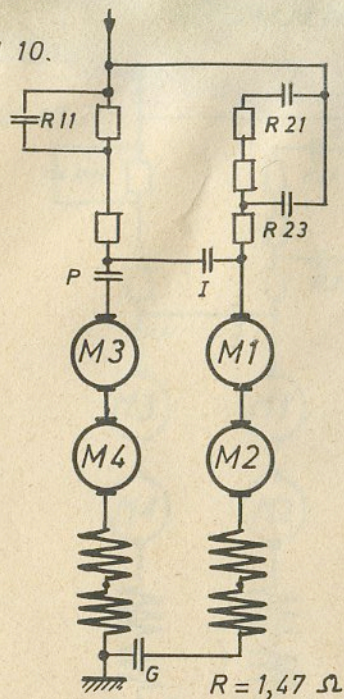
Stand 9



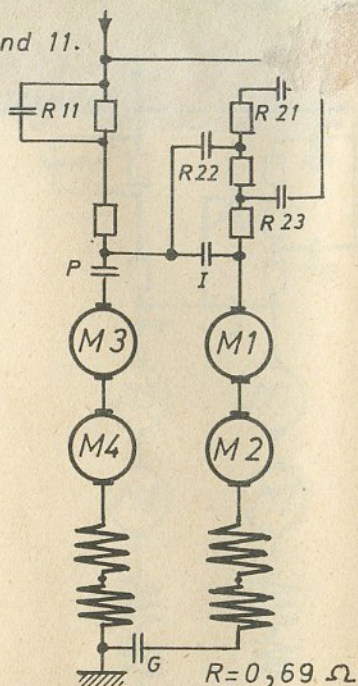
35P/B00 01 012

35P/B00 01 013

Stand 10.



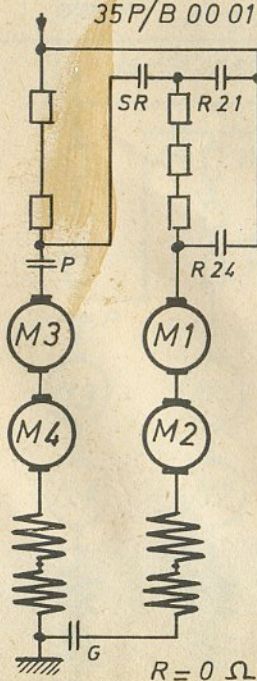
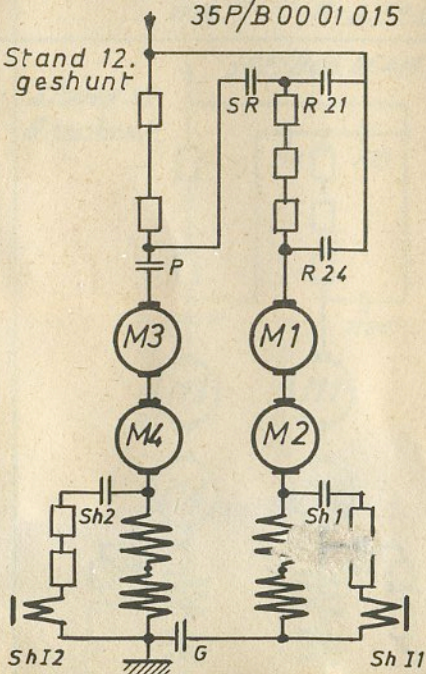
Stand 11.



35P/B 00 01 014

35P/B00 01 015

Stand 12.

Stand 12.  
geschunt

Richtung I

Richtung II

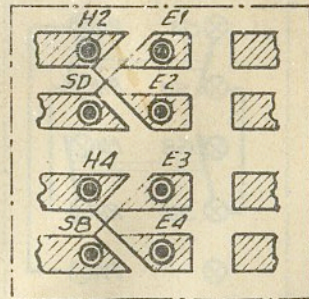
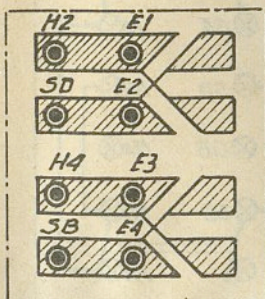
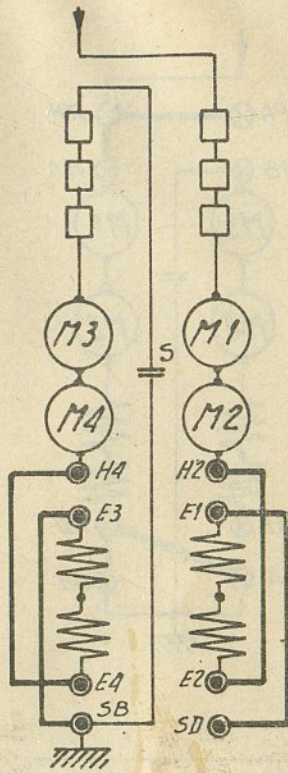
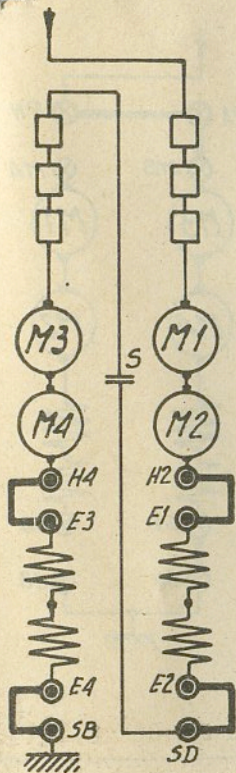


Fig 25

~~M3 + M4~~

~~M1 + M2.~~

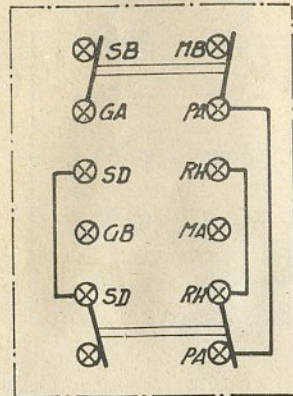
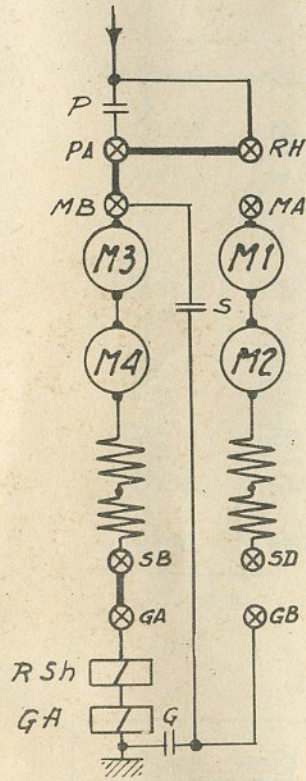
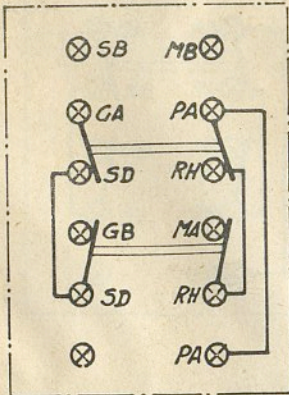
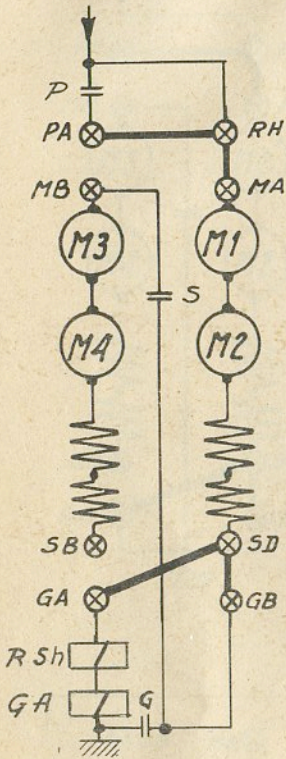
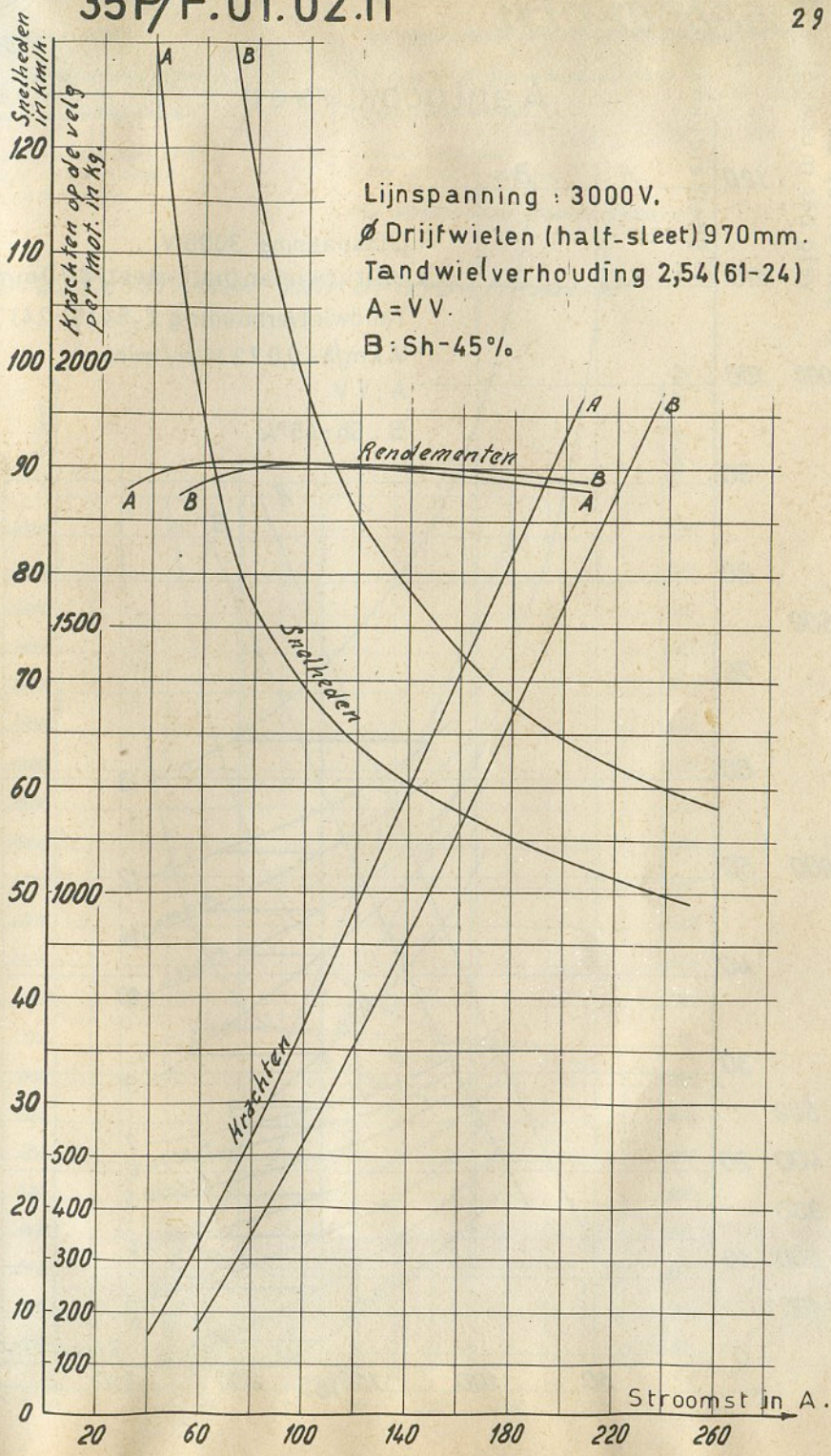
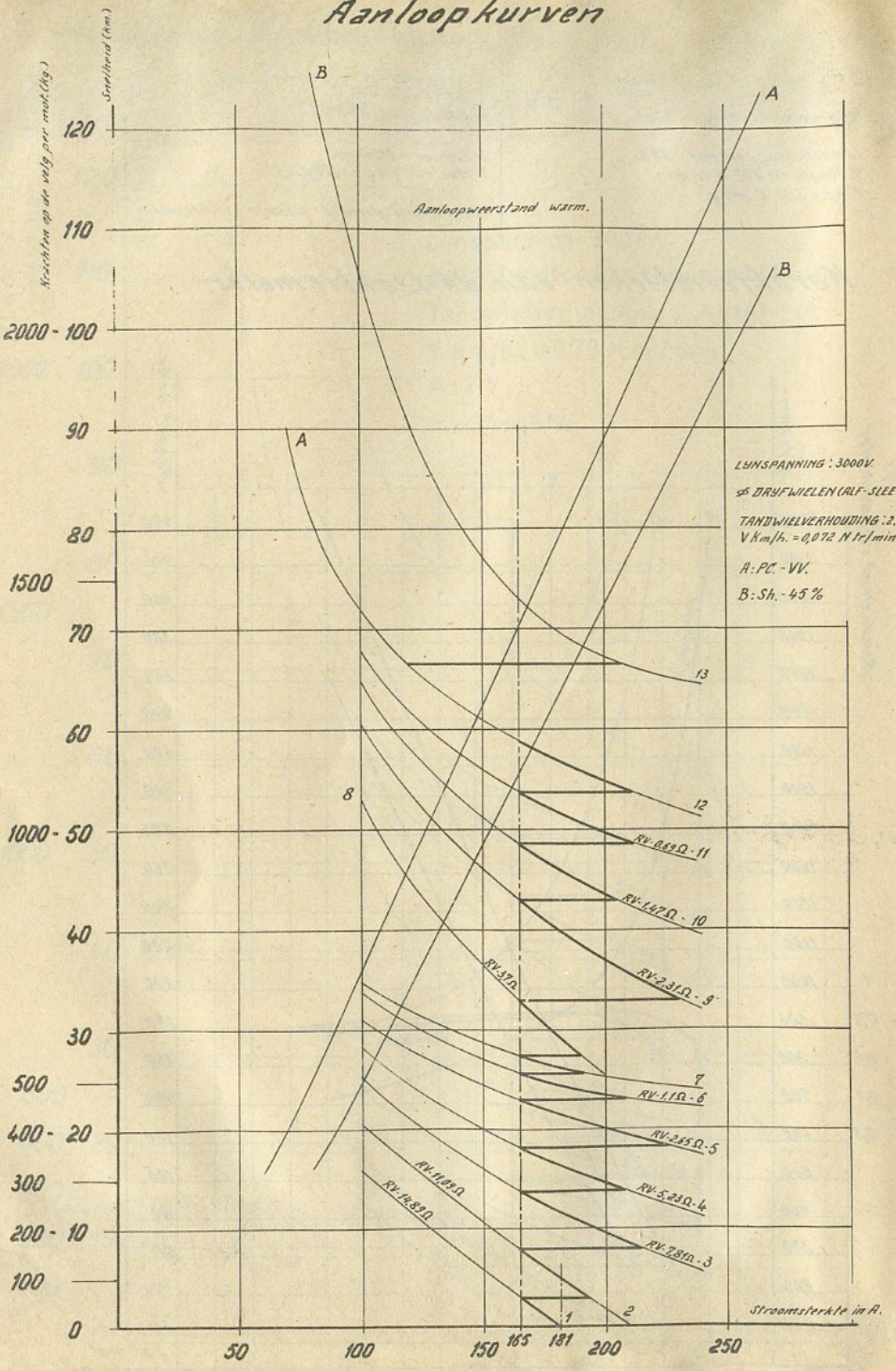


Fig. 26



# Aanloopkurven



Snelheid (mm)

120  
110  
2000 - 100  
90  
80  
1500  
70  
60  
1000 - 50  
40  
30  
500  
400 - 20  
300  
200 - 10  
100  
0

50 100 150 165 181 200 250

B

A

B

A

8

13

12

RV-0650-11

RV-1470-10

RV-370

RV-2310-9

7

RV-110-6

RV-2850-5

RV-11000

RV-19850

RV-5210-4

RV-7000-3

1

2



