

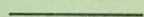
NATIONALE MAATSCHAPPIJ DER BELGISCHE SPOORWEGEN



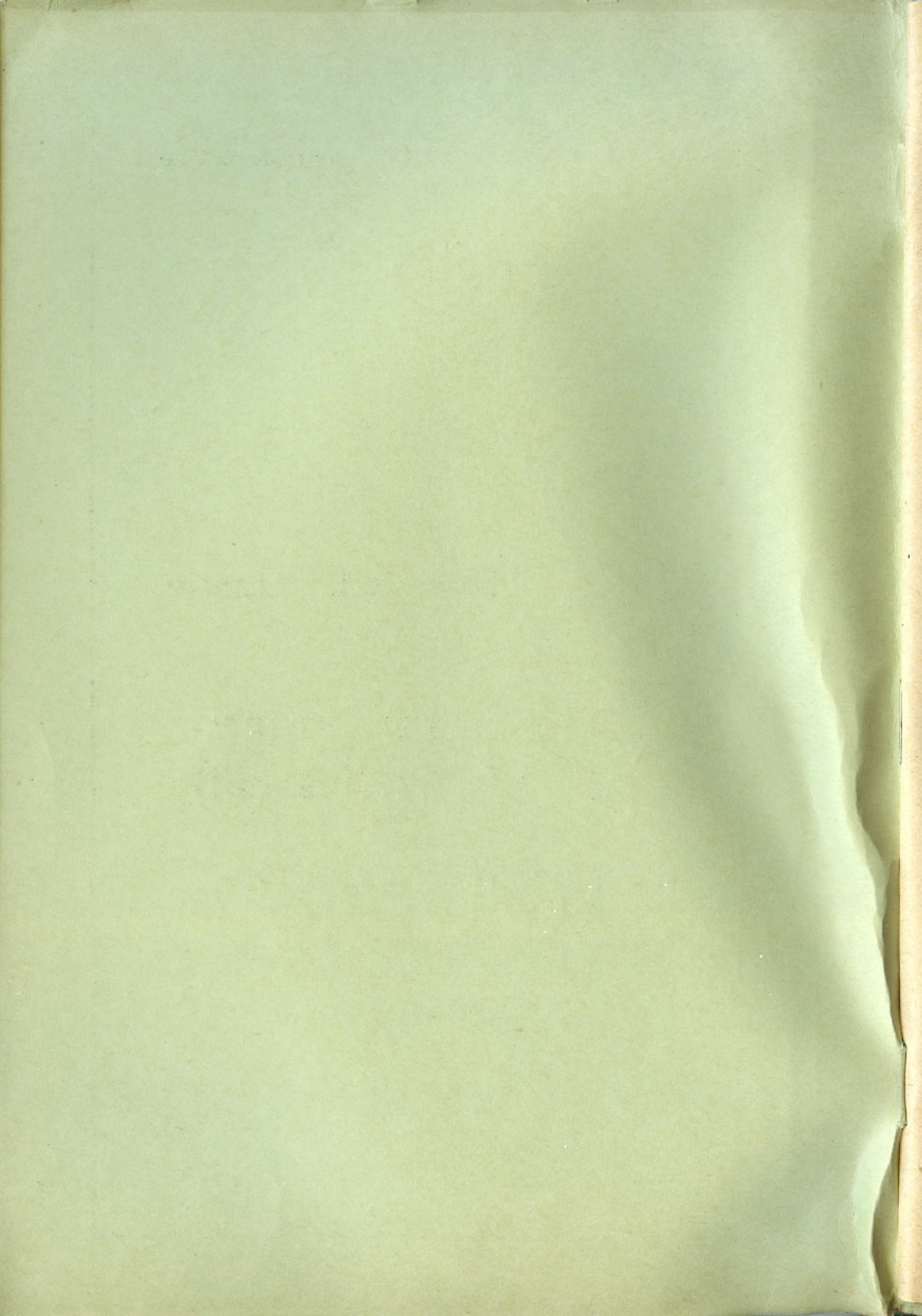
Boekje HLT

Deel 12 — Electrische tractie

**Dubbele motorrijtuigen
type 1953 Ma (Marelli)**



Figuren



NATIONALE MAATSCHAPPIJ DER BELGISCHE SPOORWEGEN

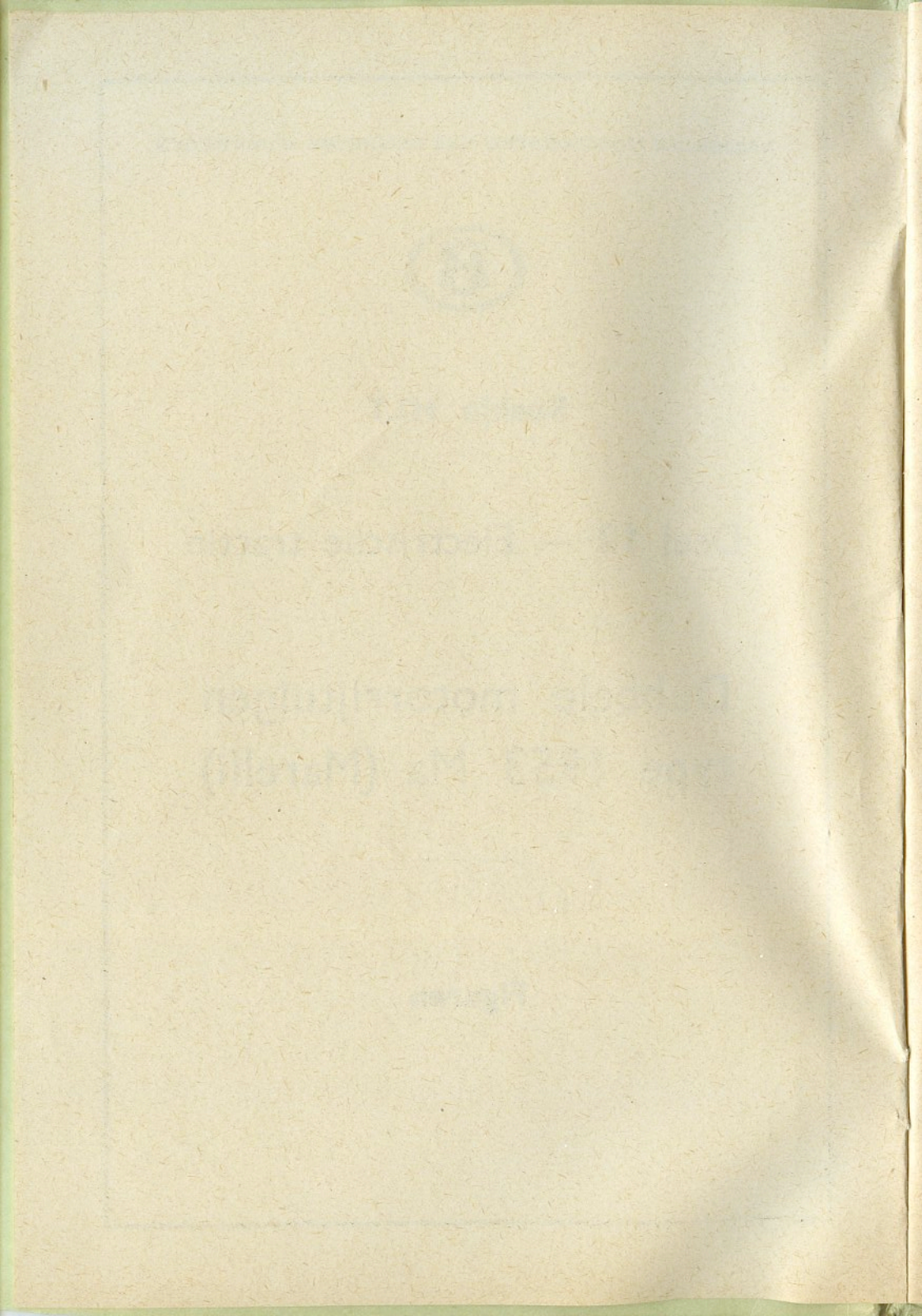


Boekje HLT

Deel 12 — Electrische tractie

**Dubbele motorrijtuigen
type 1953 Ma (Marelli)**

Figuren



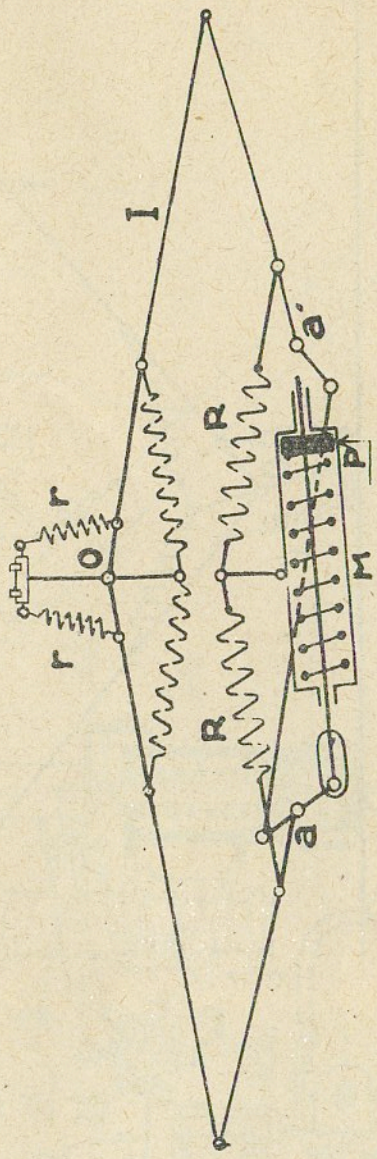


Fig. 1

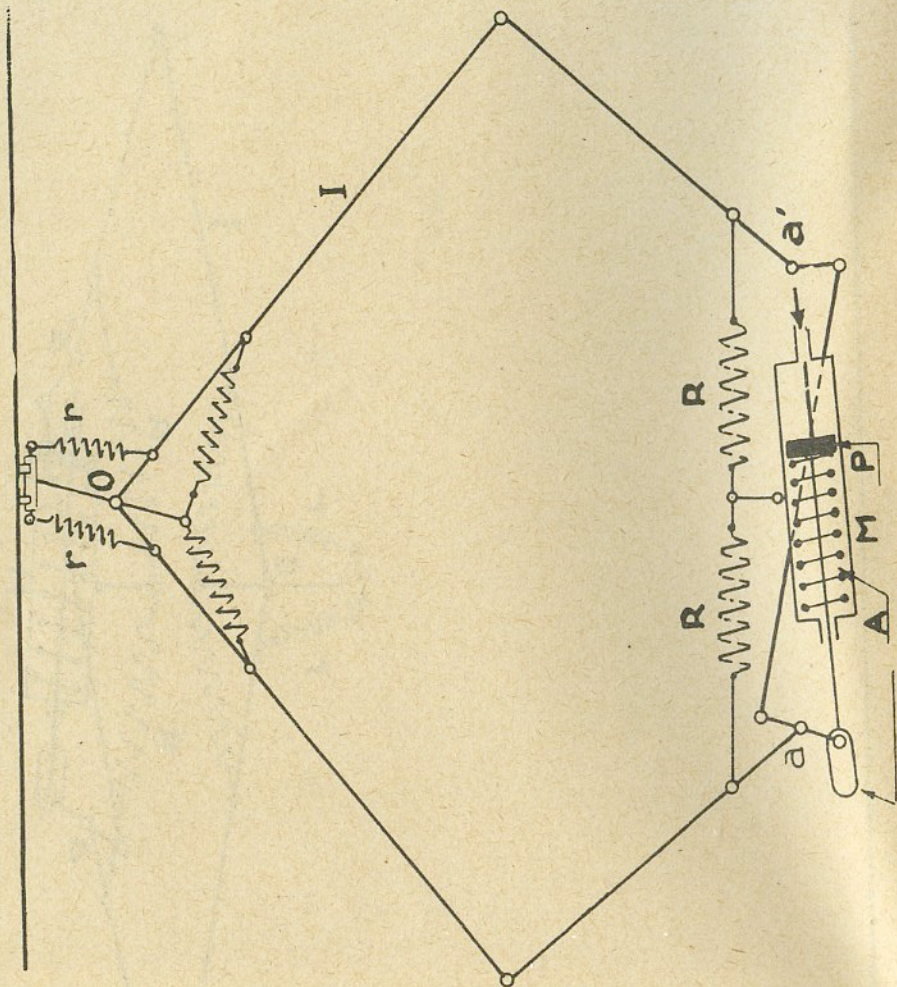


Fig. 2

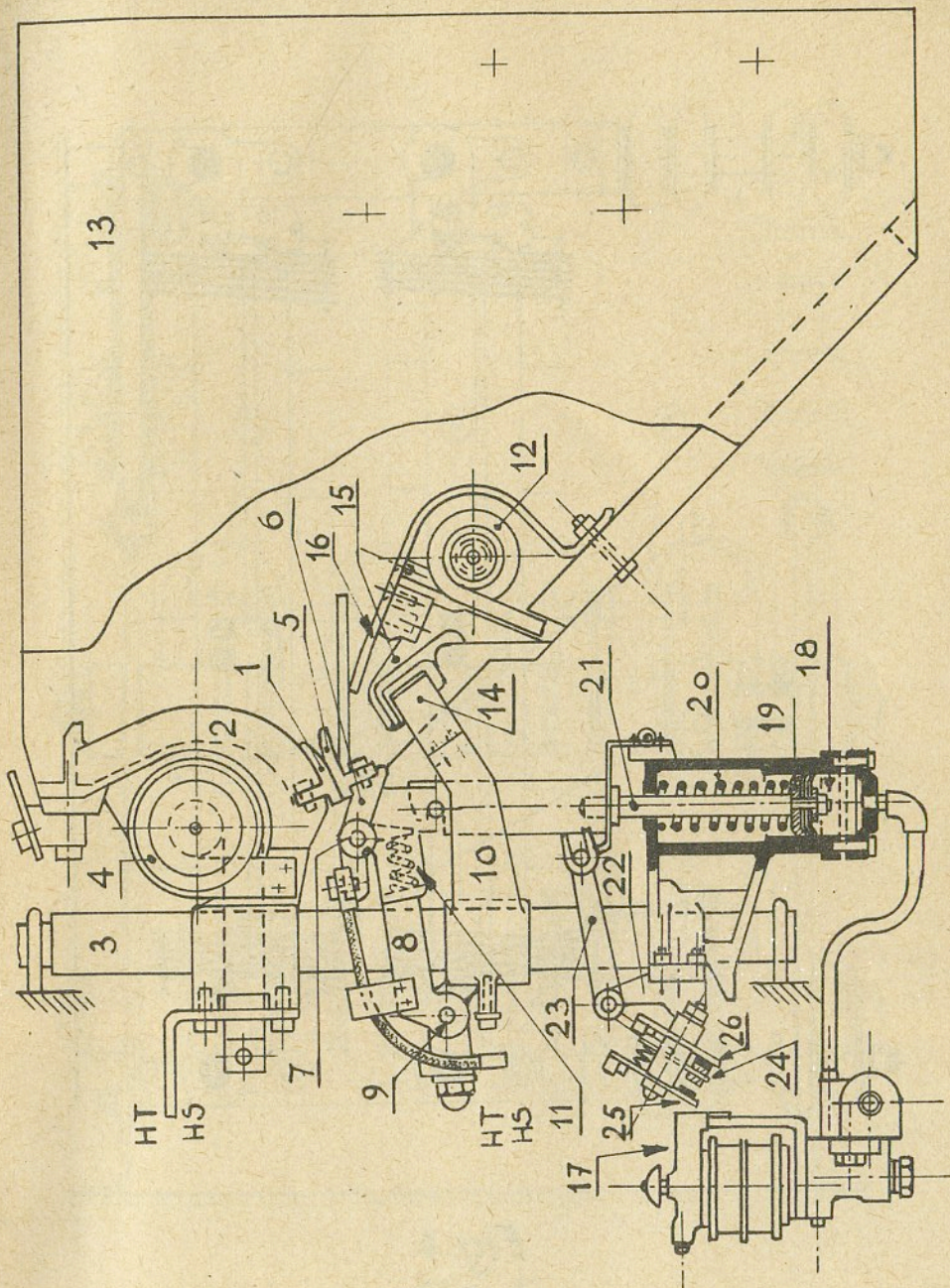


Fig. 3

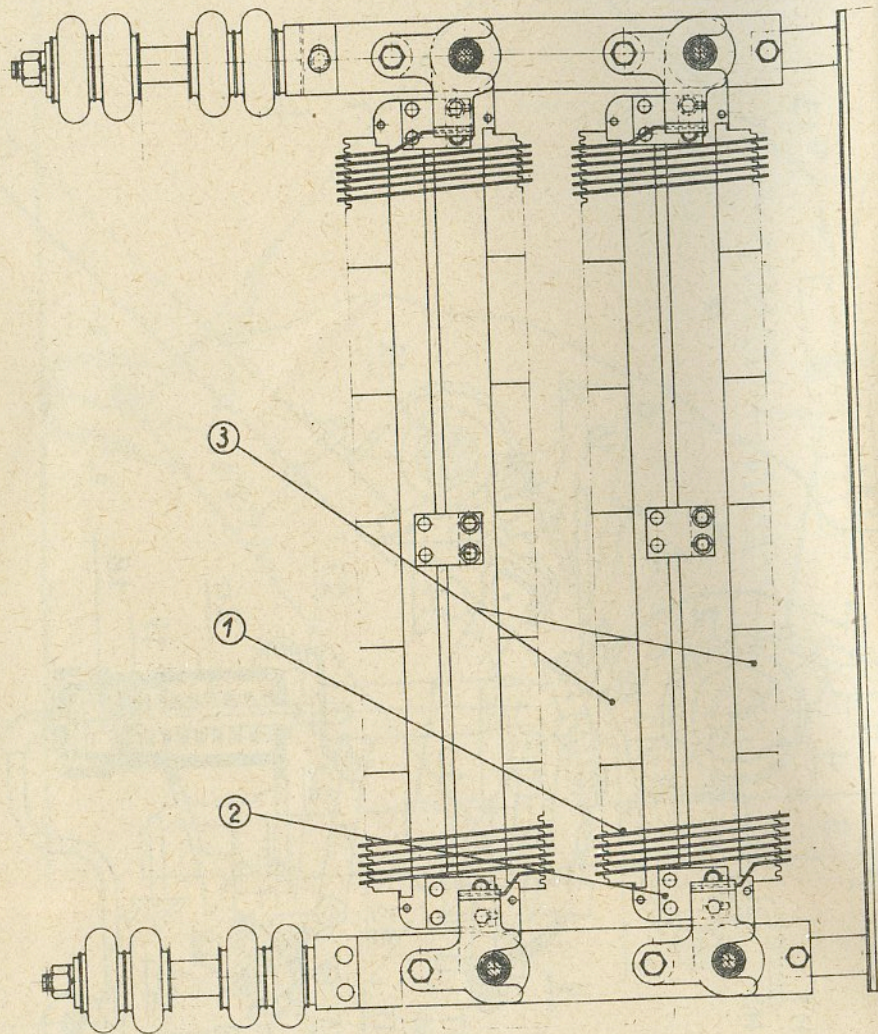


Fig. 4

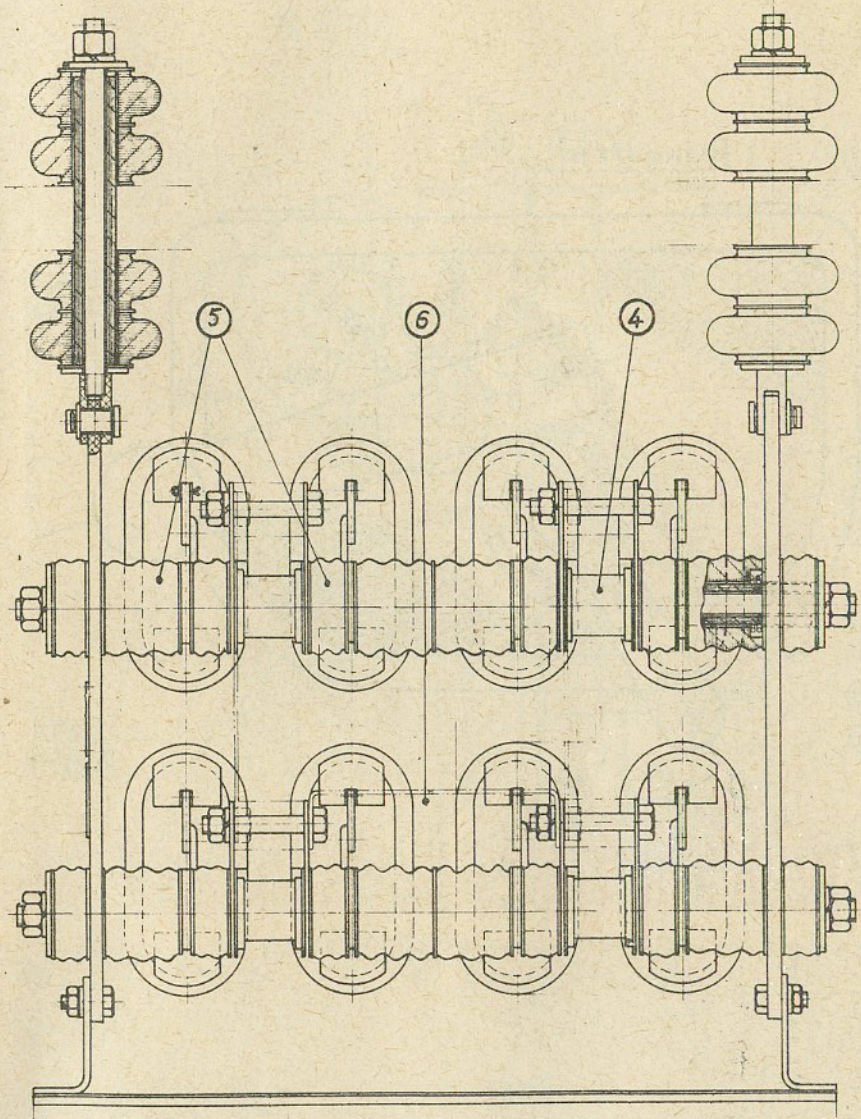


Fig. 5

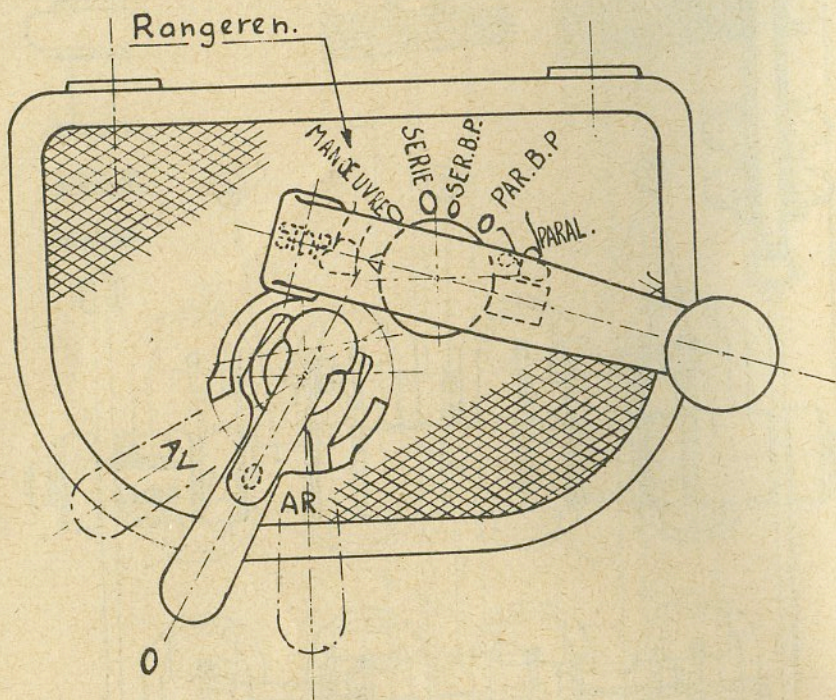


Fig. 6

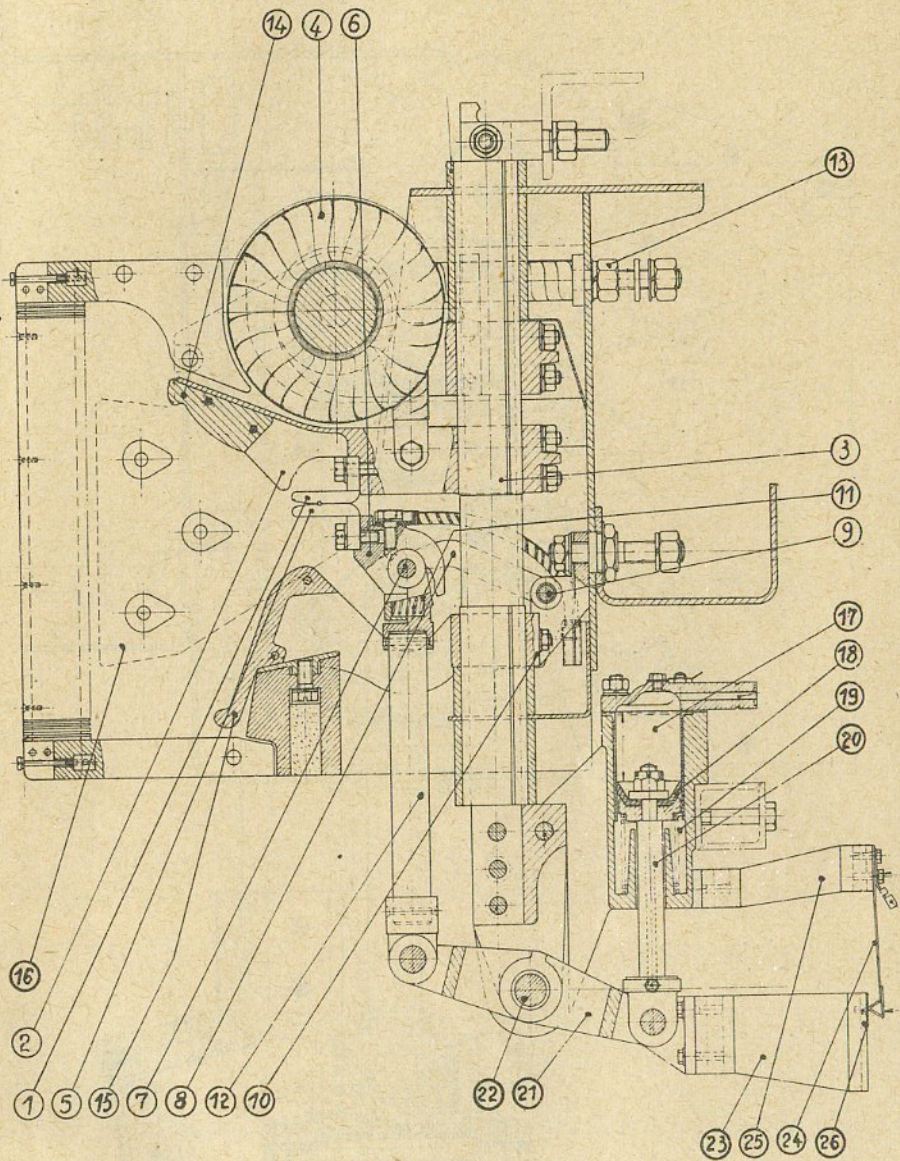


Fig. 7

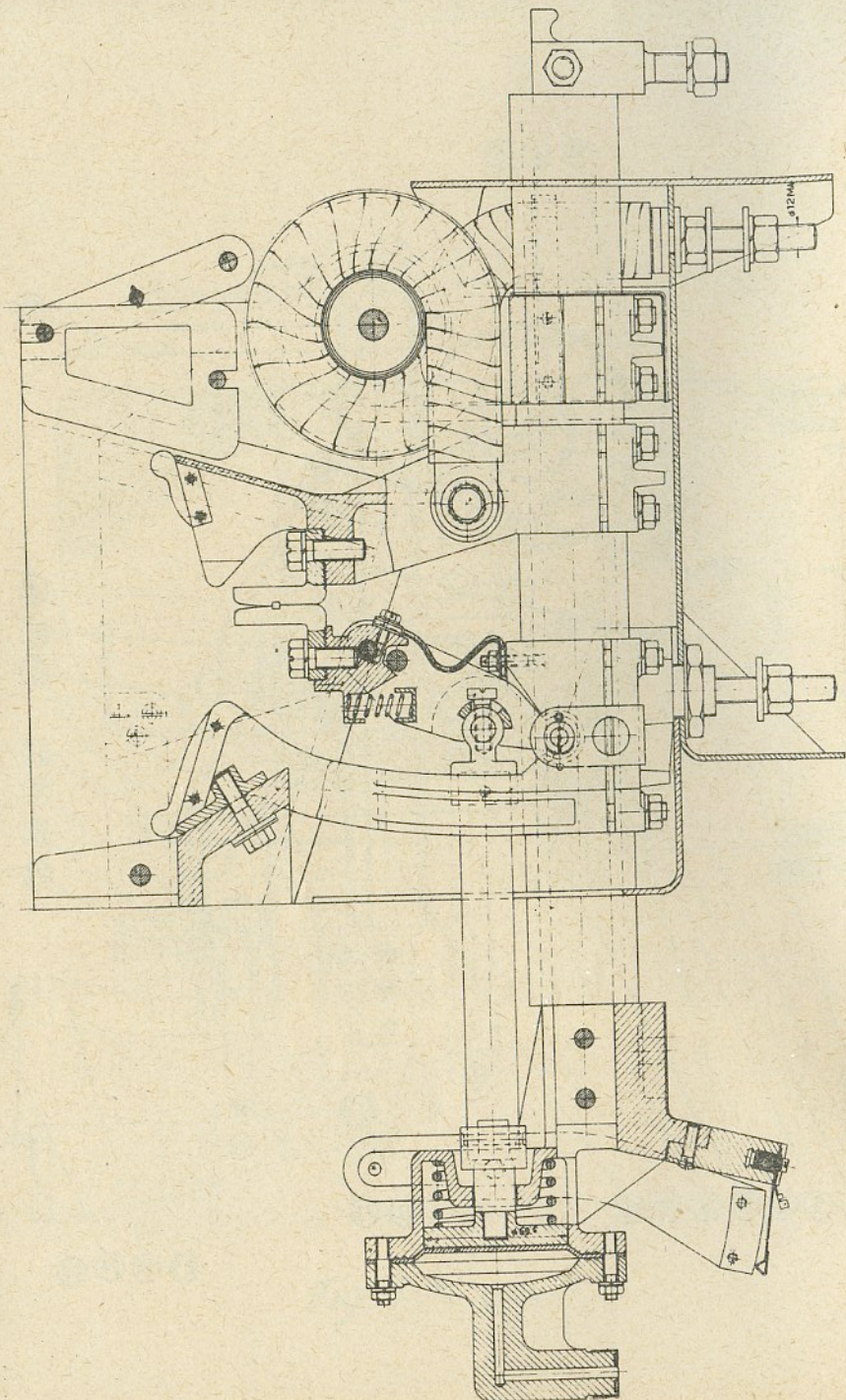


Fig. 7 bis.

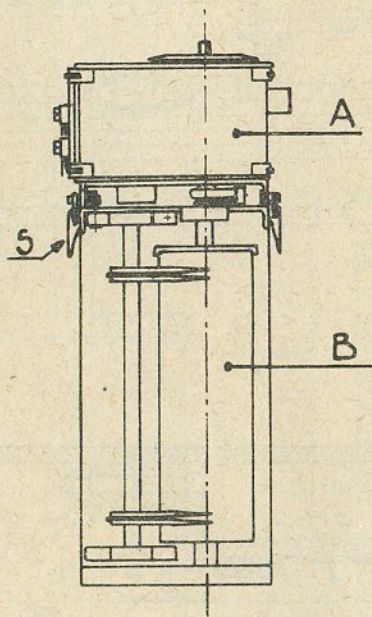


Fig. 8

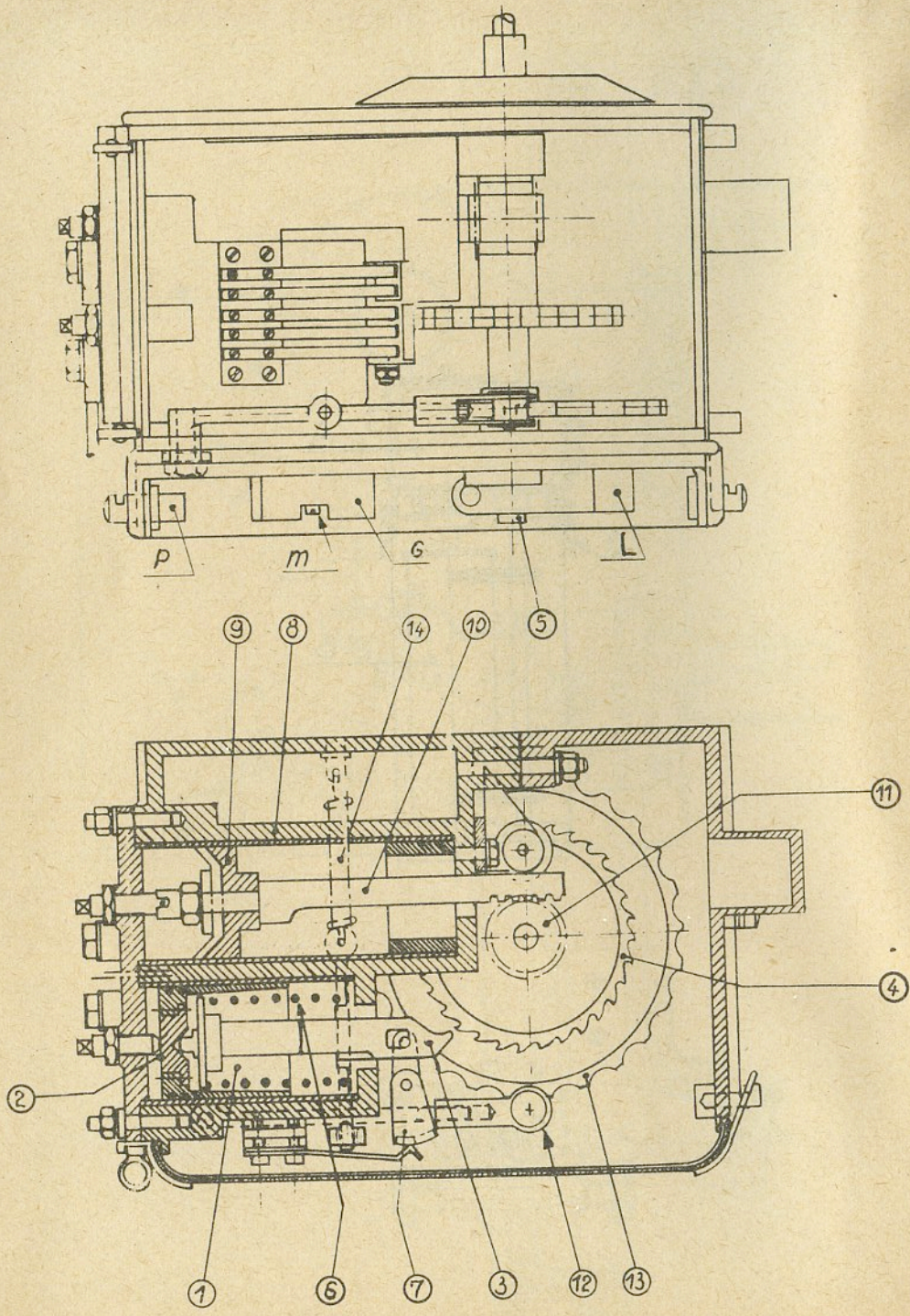


Fig. 9

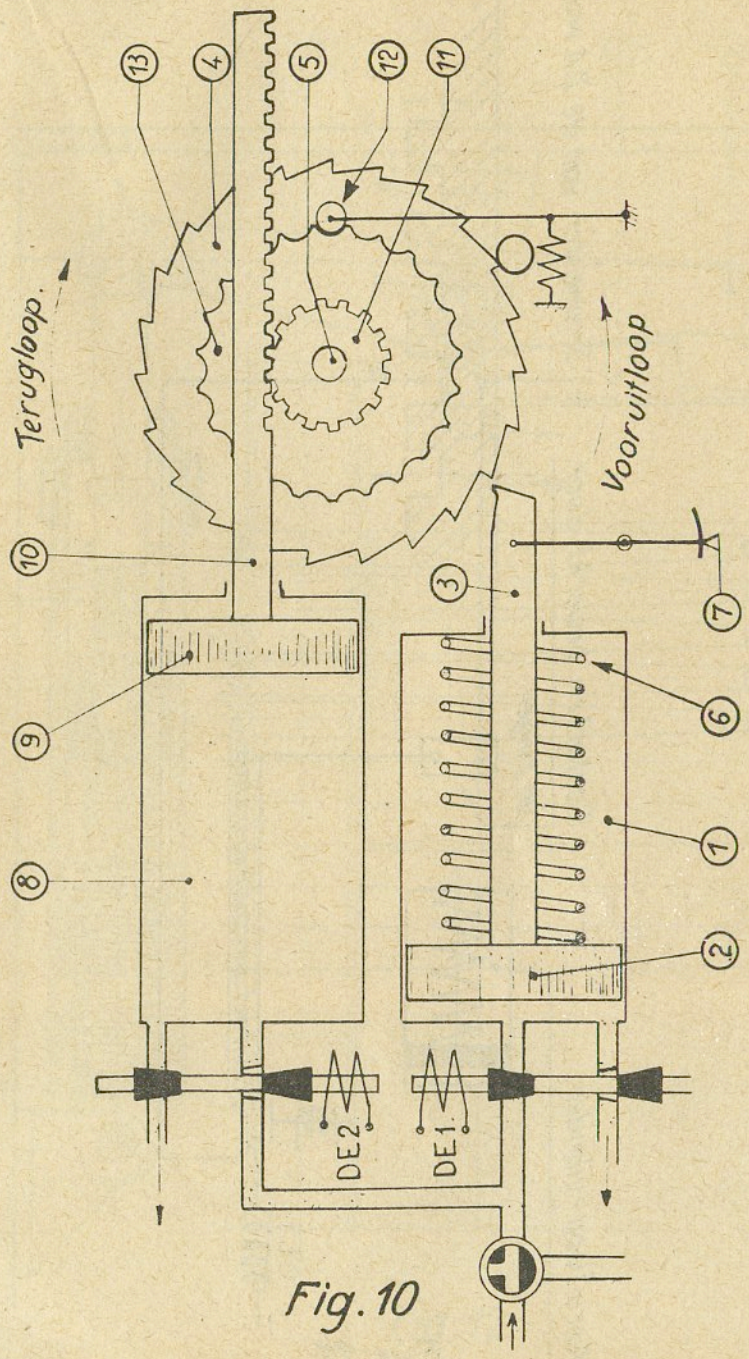


Fig. 10

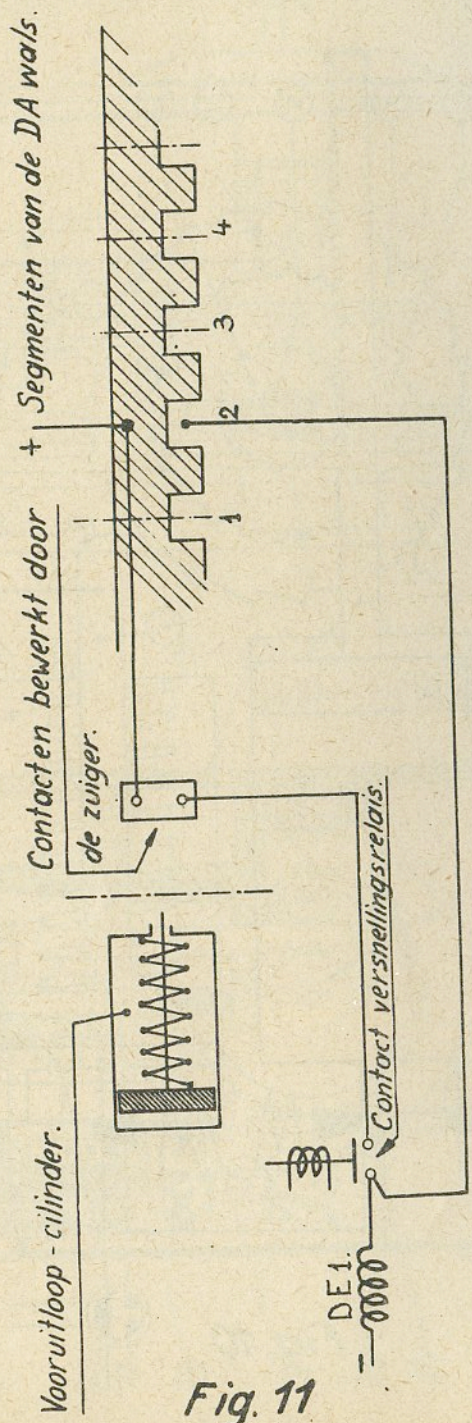


Fig. 11

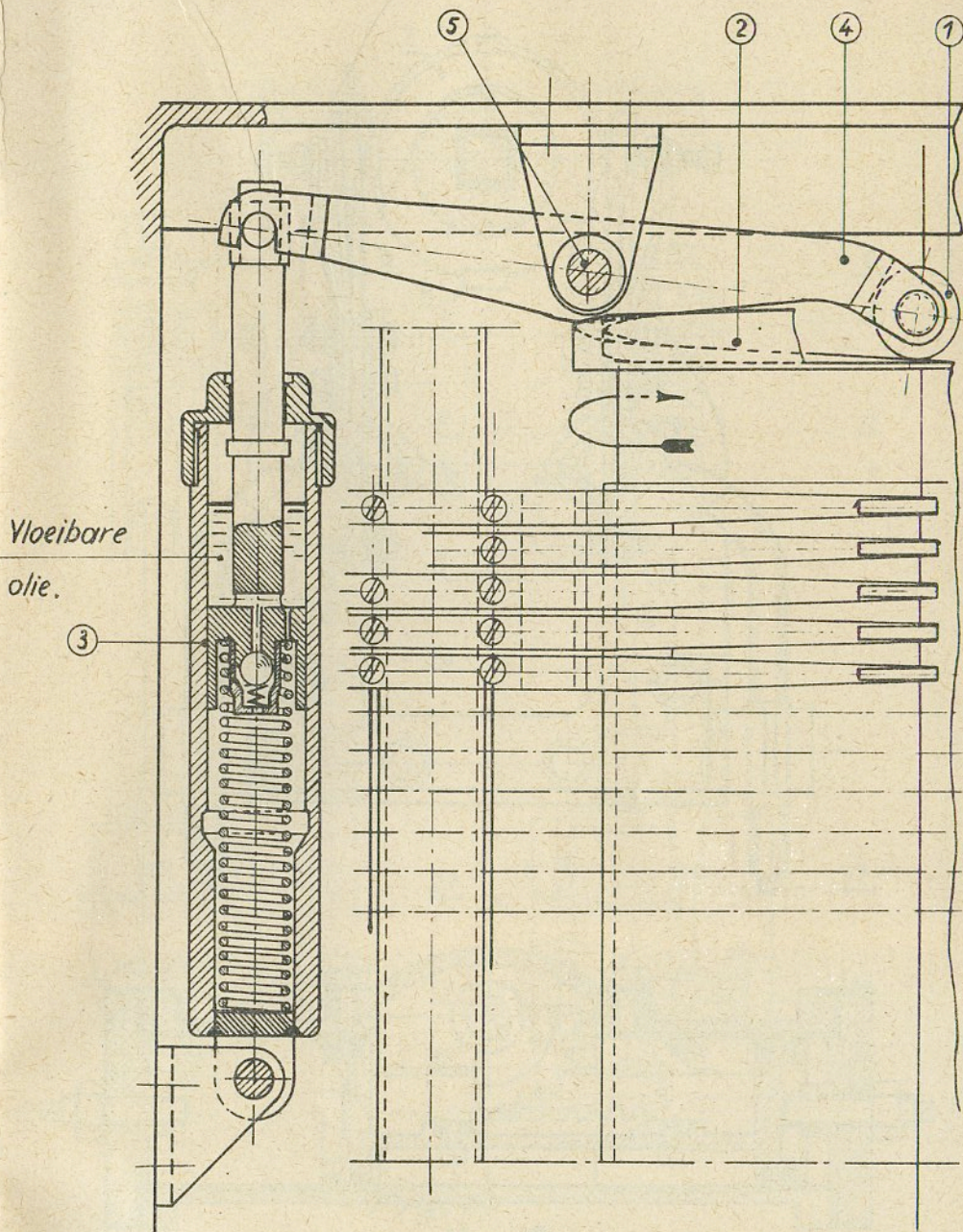


Fig. 12

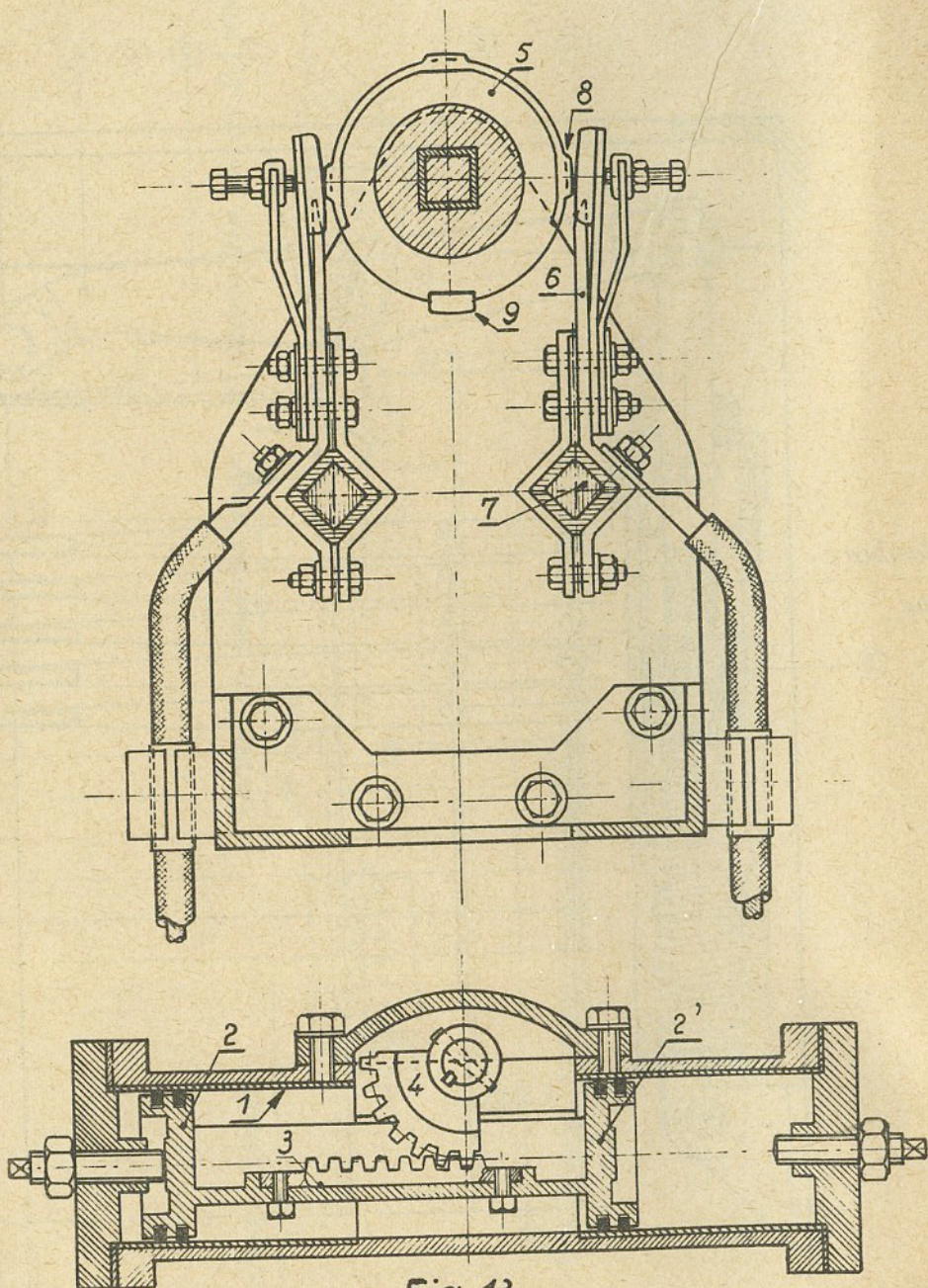


Fig. 13

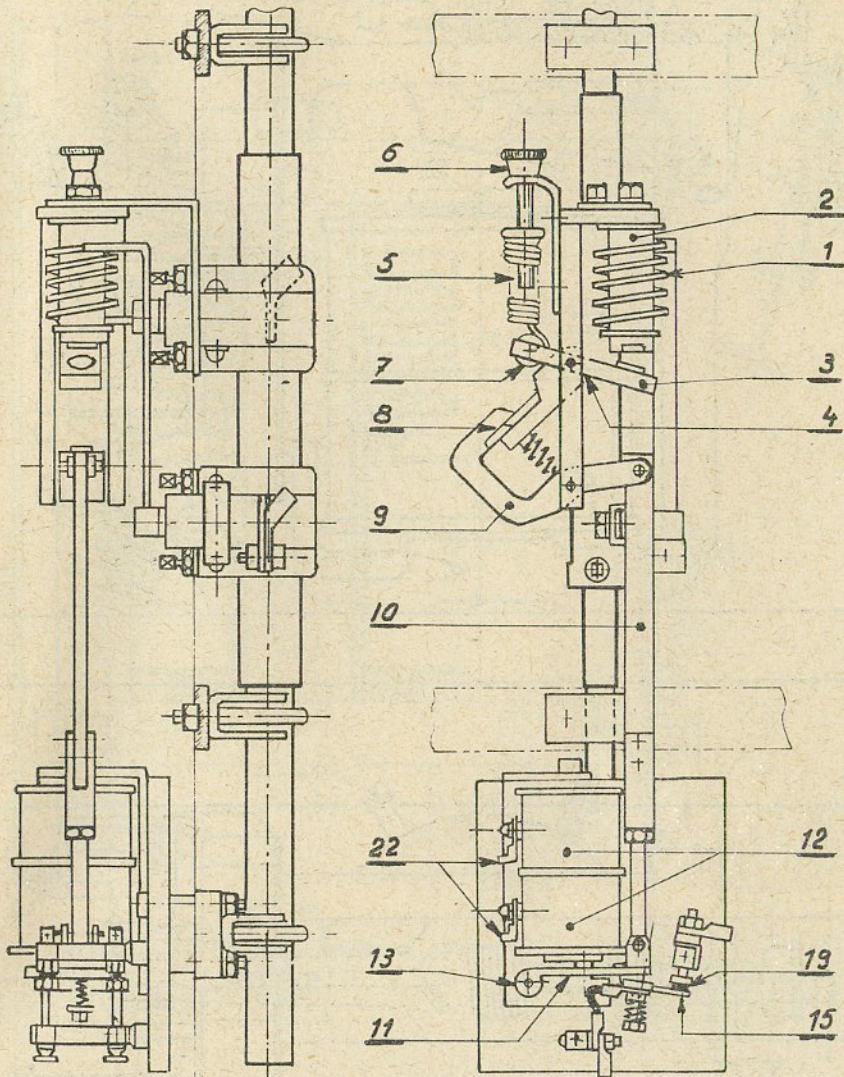


Fig. 14

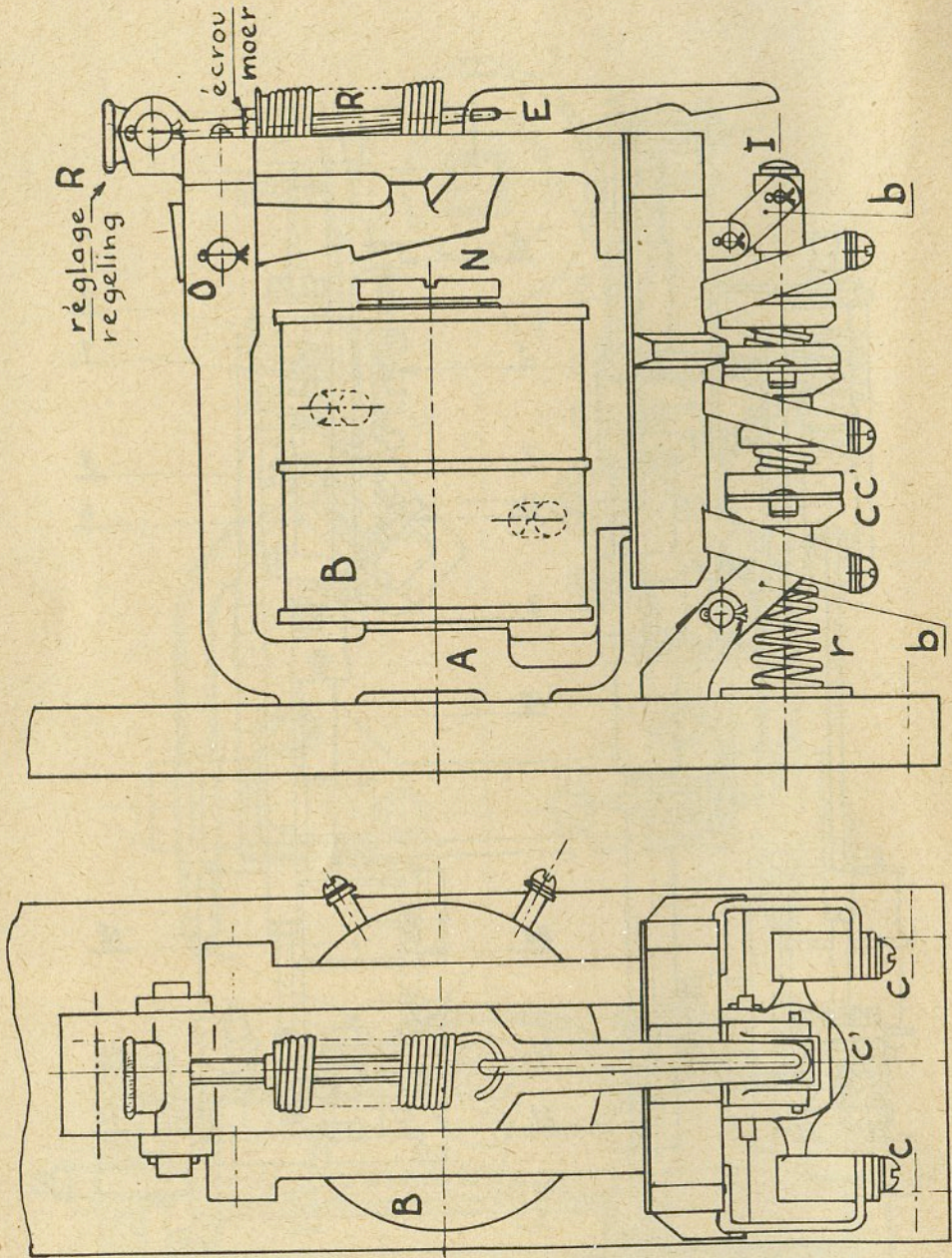


Fig. 15

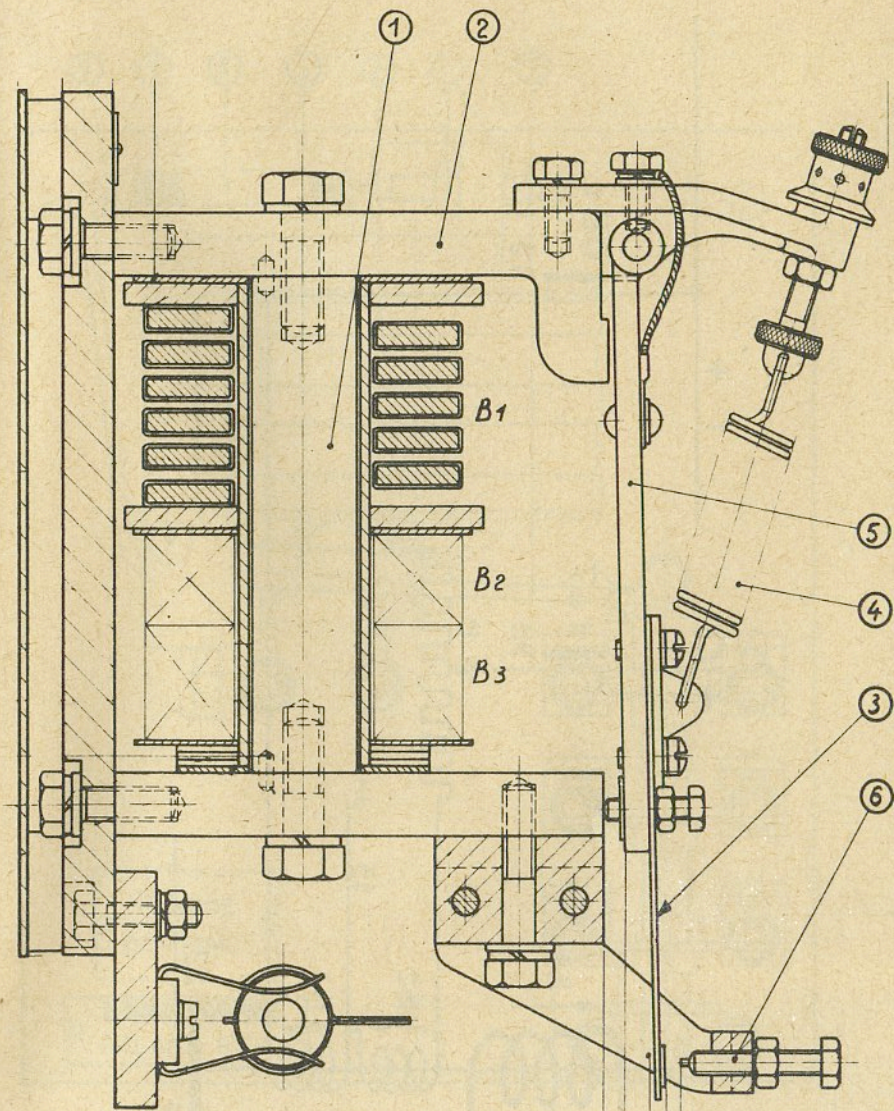


Fig.16

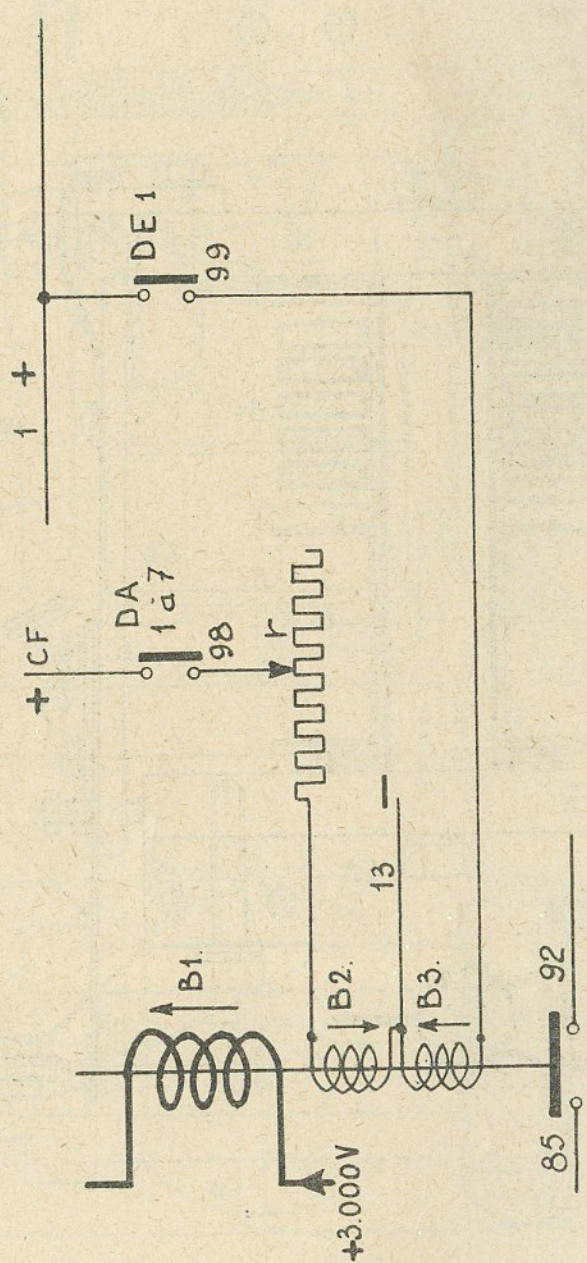


Fig. 17

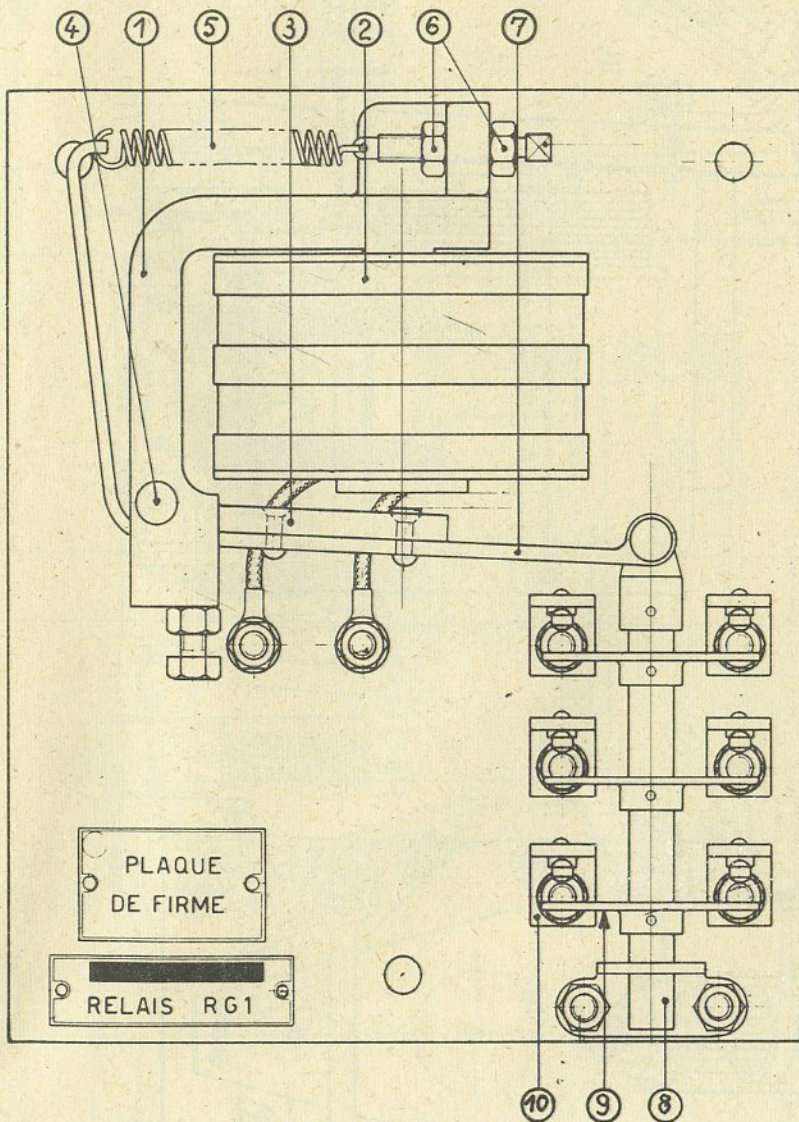


Fig. 18

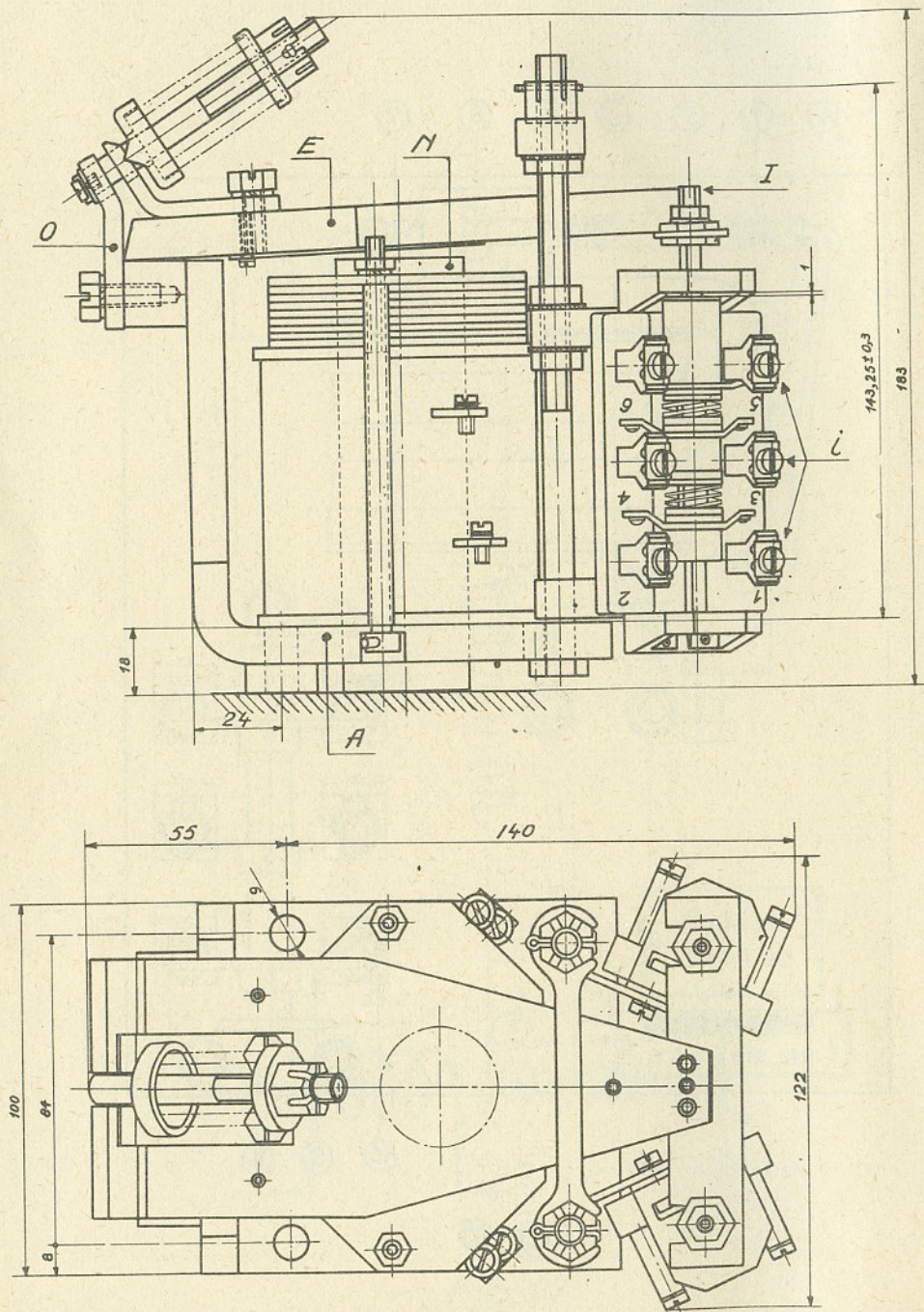


Fig. 18 bis.

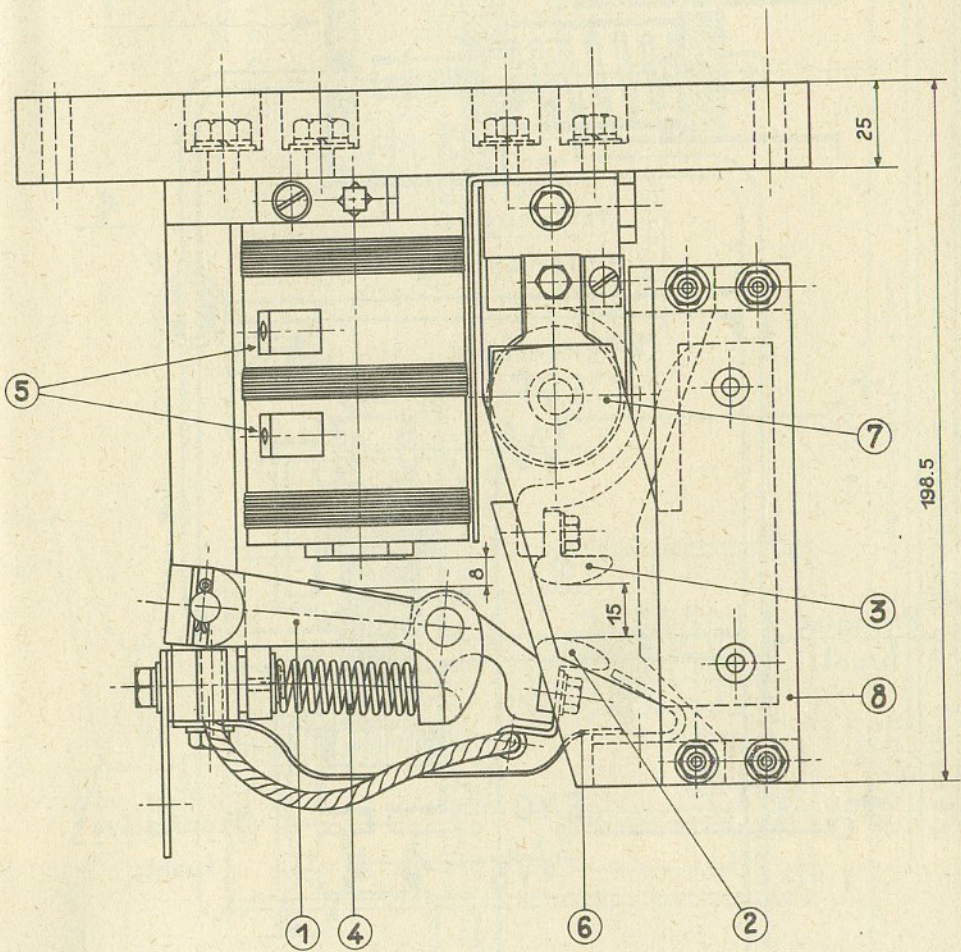


Fig. 19

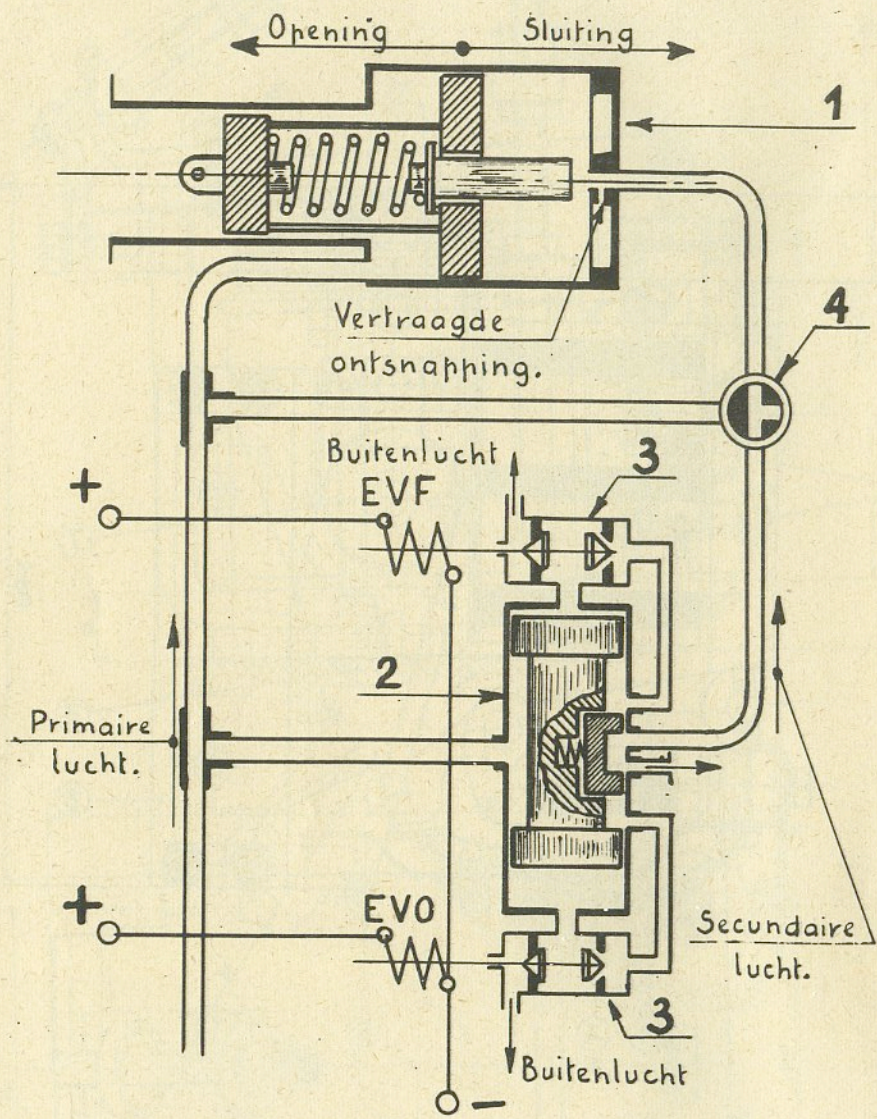


Fig. 20

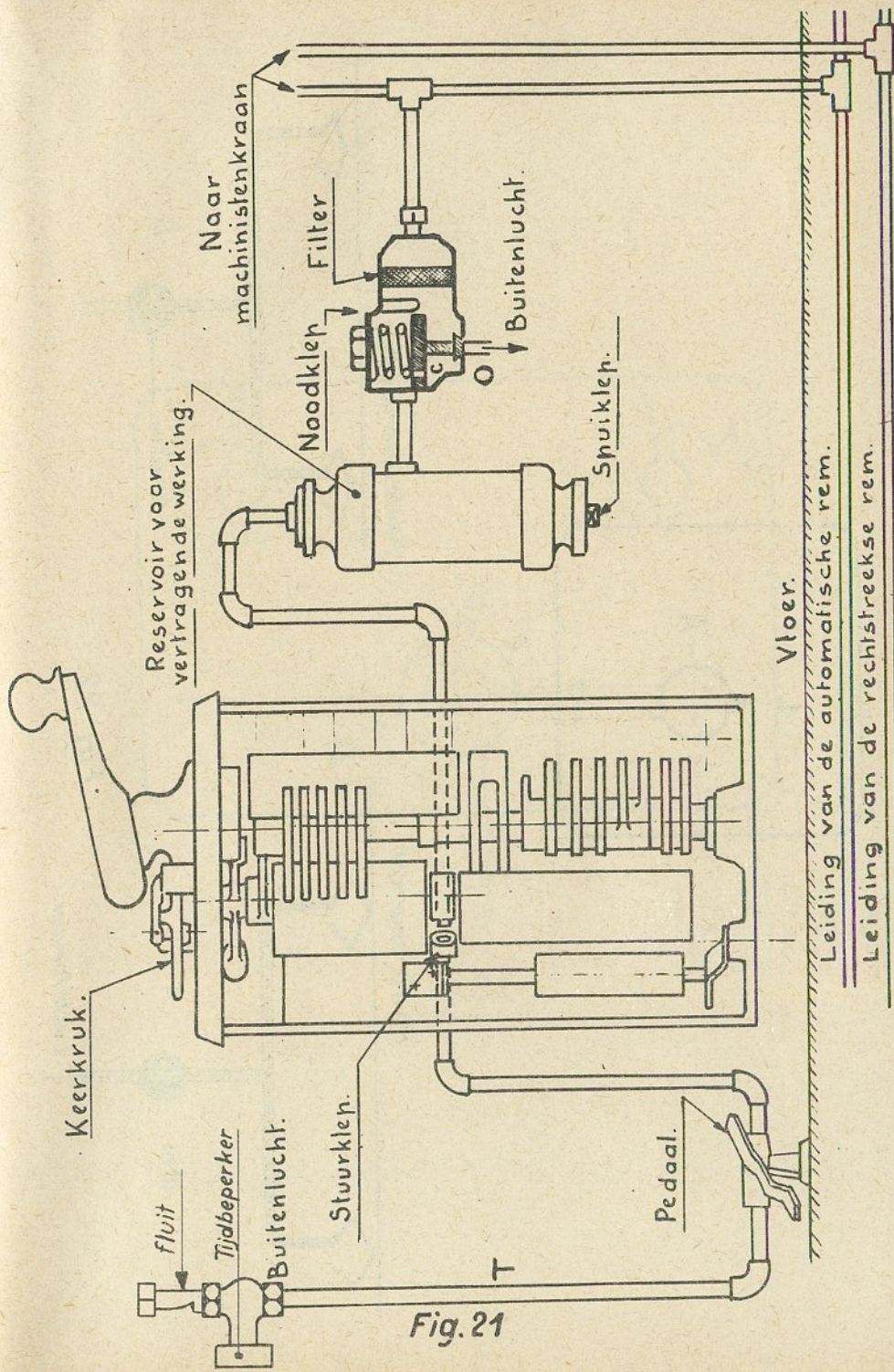
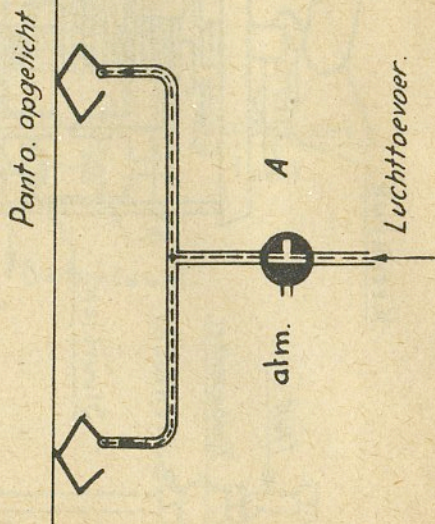
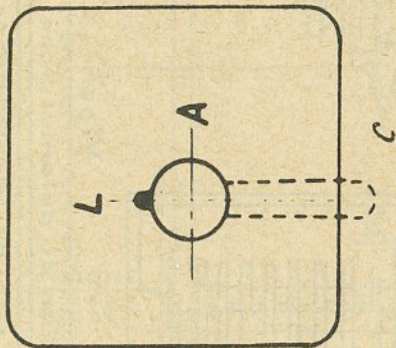


Fig. 21



Pant. neergelaten

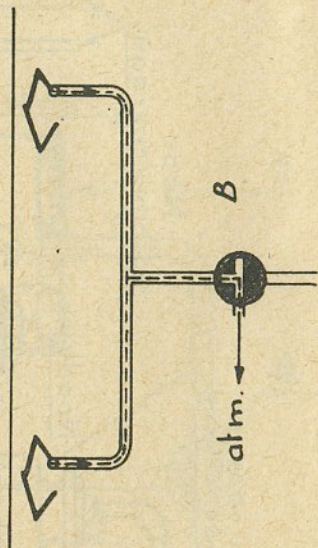


Fig. 22

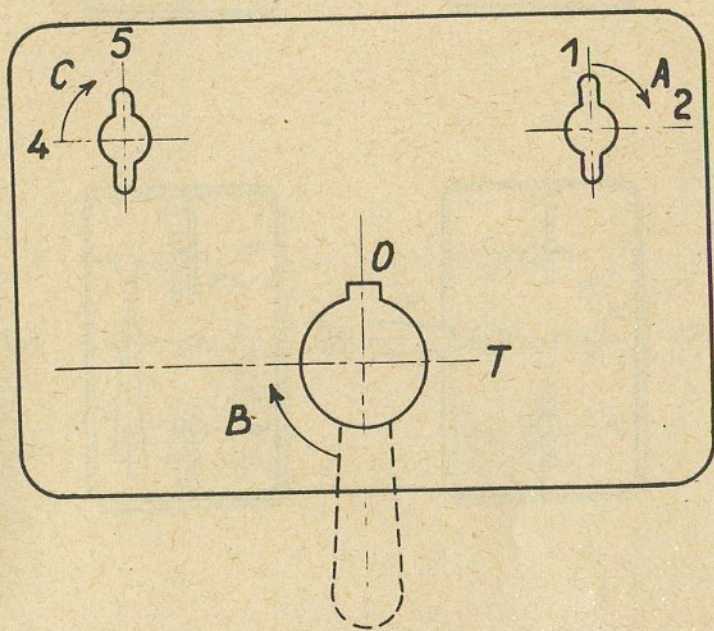
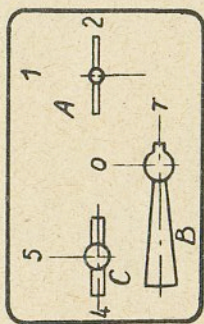
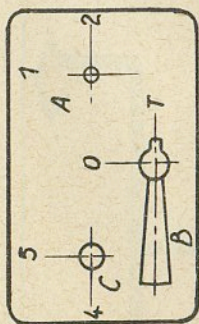


Fig.23

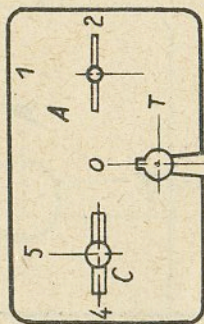
Aarding.



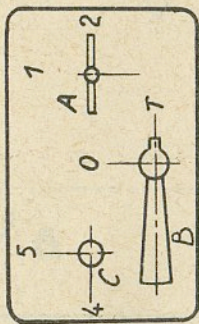
③



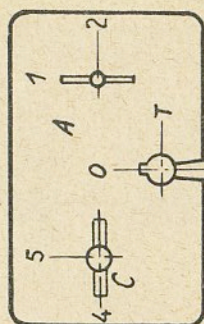
⑥



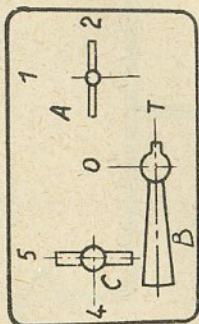
②



⑤



①



④

Fig. 24

Terugplaatsing in normale stand.

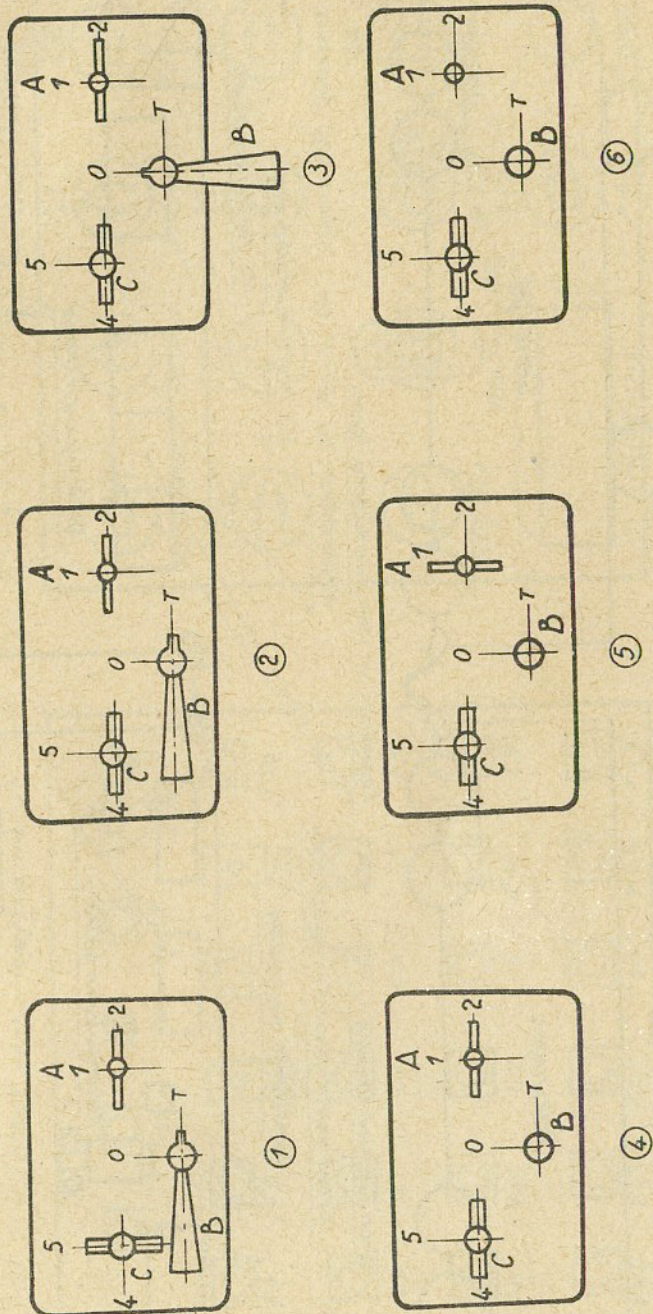


Fig. 25

Plaats van de toestellen onder raam

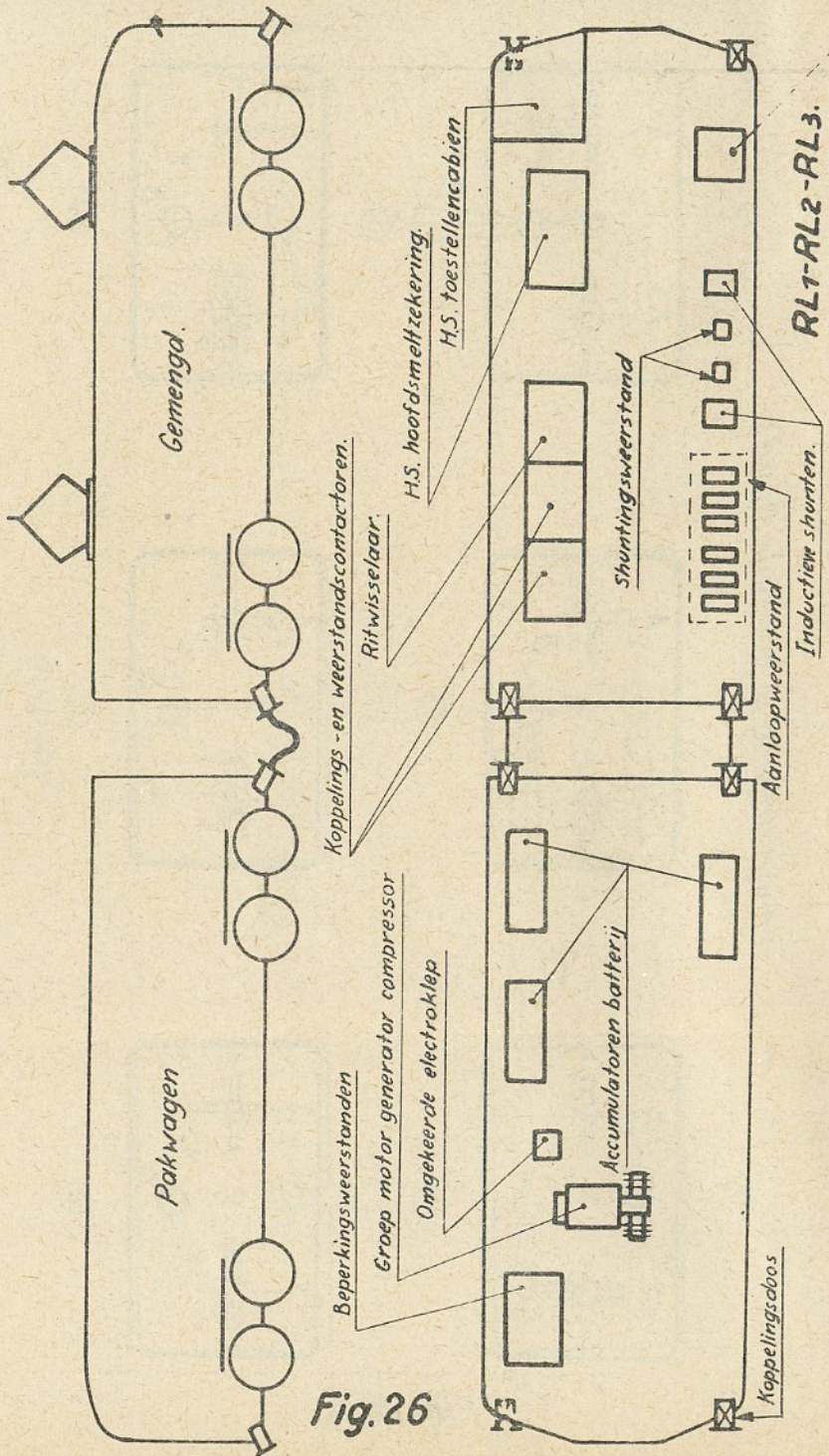


Fig. 26

Gemengd rijtuig.
(Met stroomafnamers)

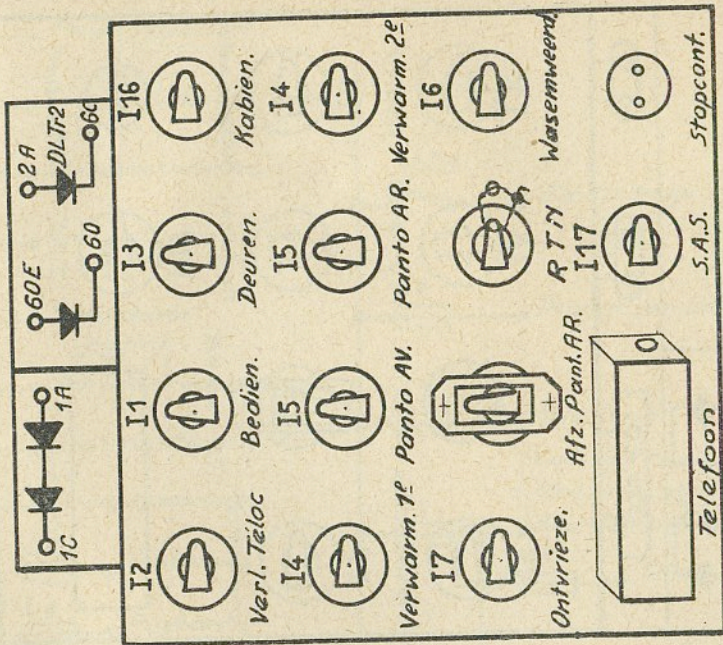
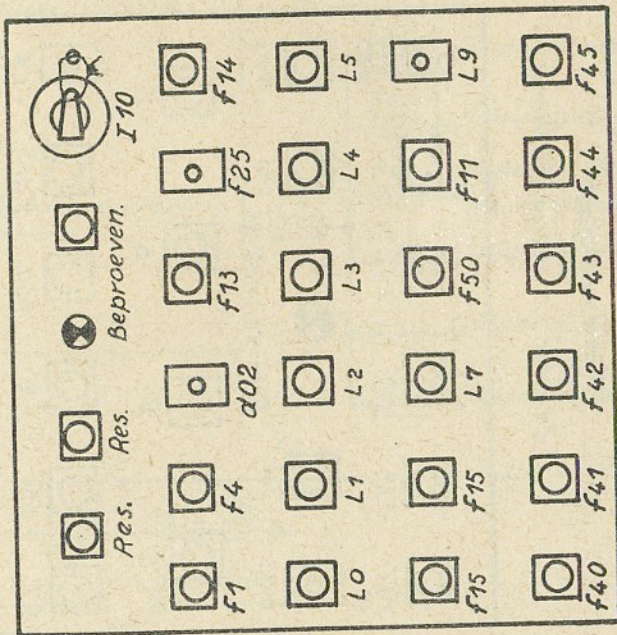


Fig. 27

Pakwagen

(Zonder stroomafnamers)

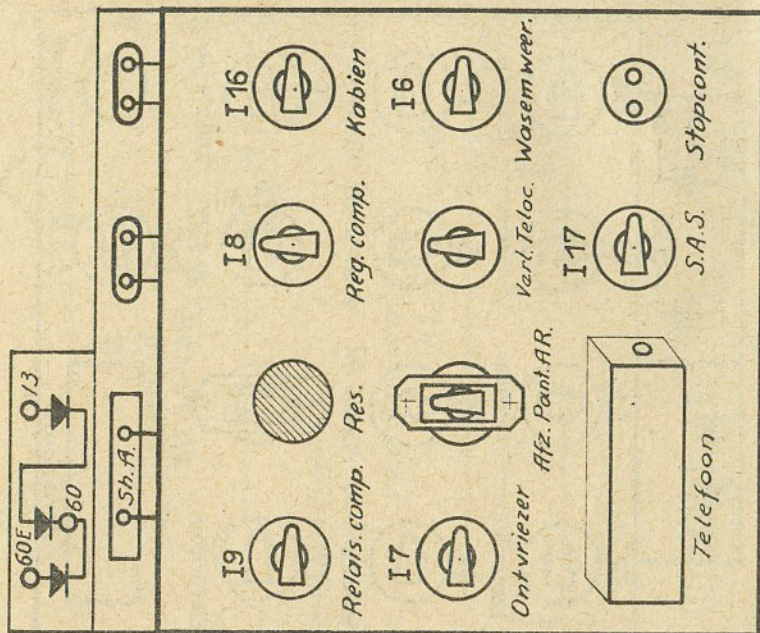
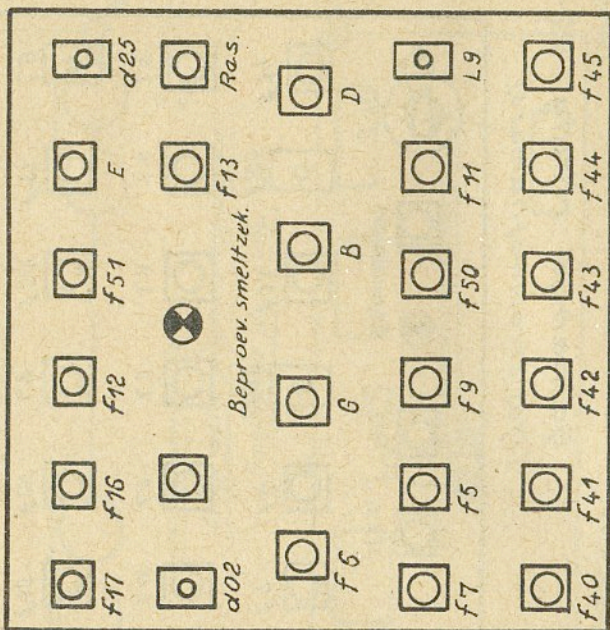


Fig. 28

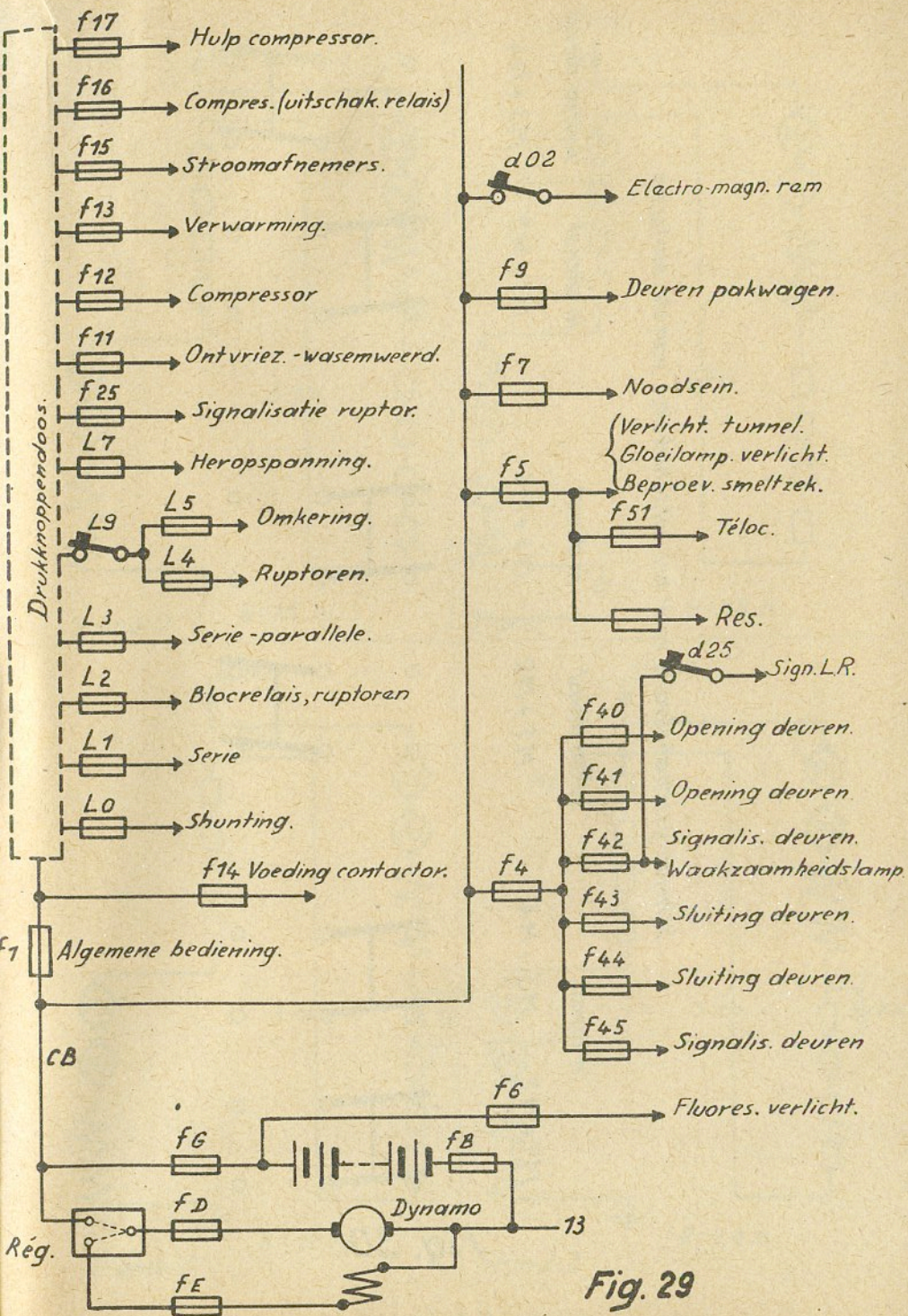


Fig. 29

Scheidingschakelaars voor het uitschakelen van de motoren.

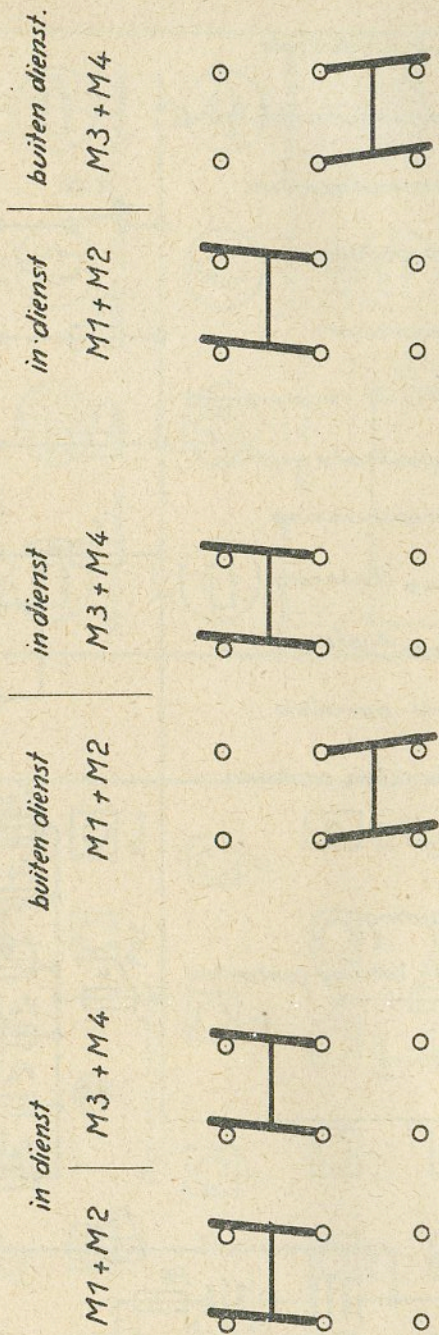
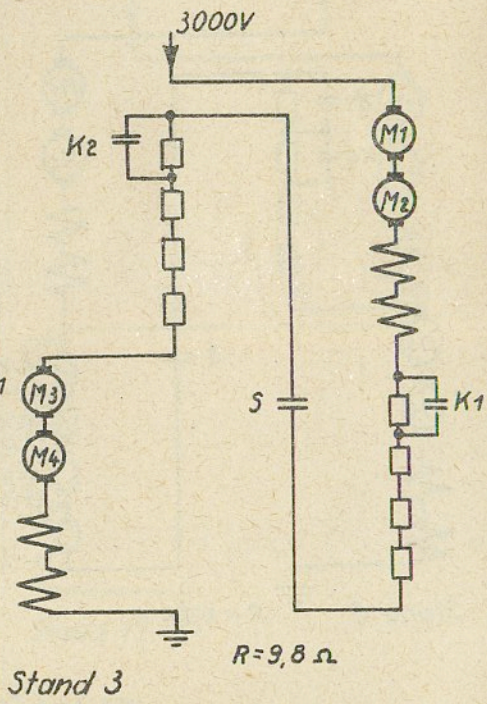
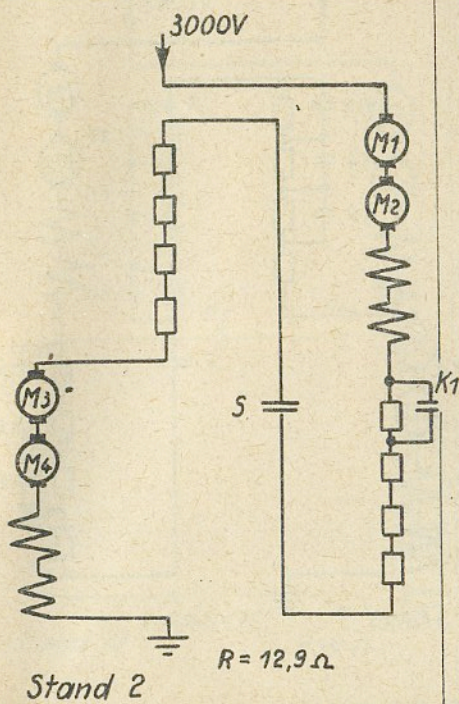
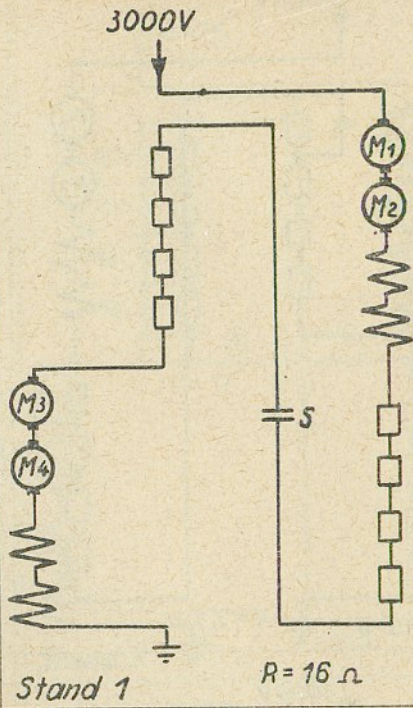
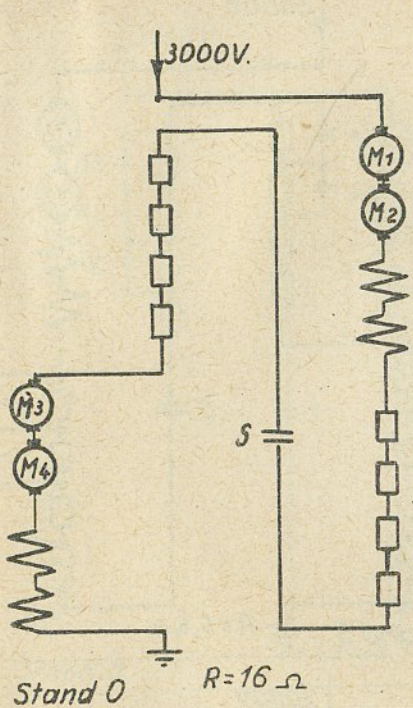
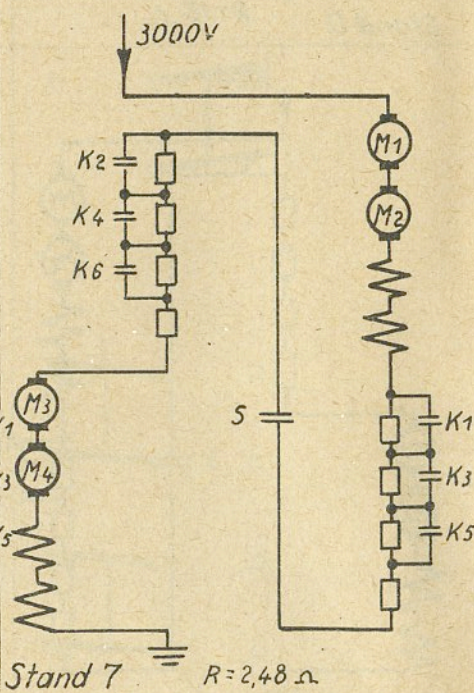
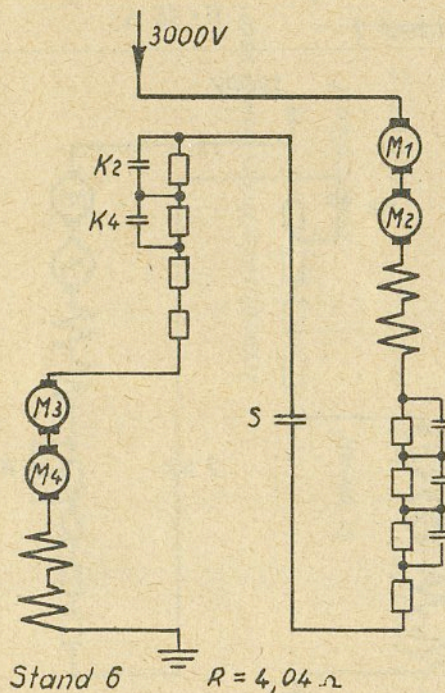
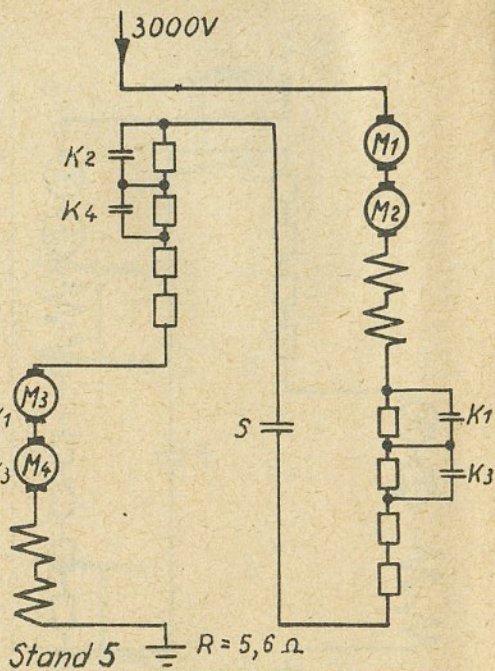
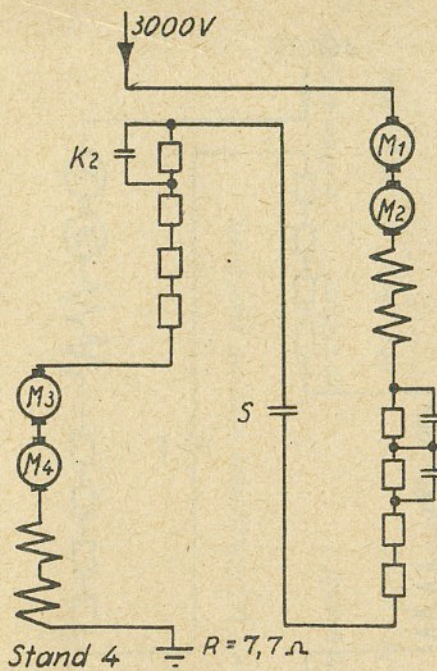
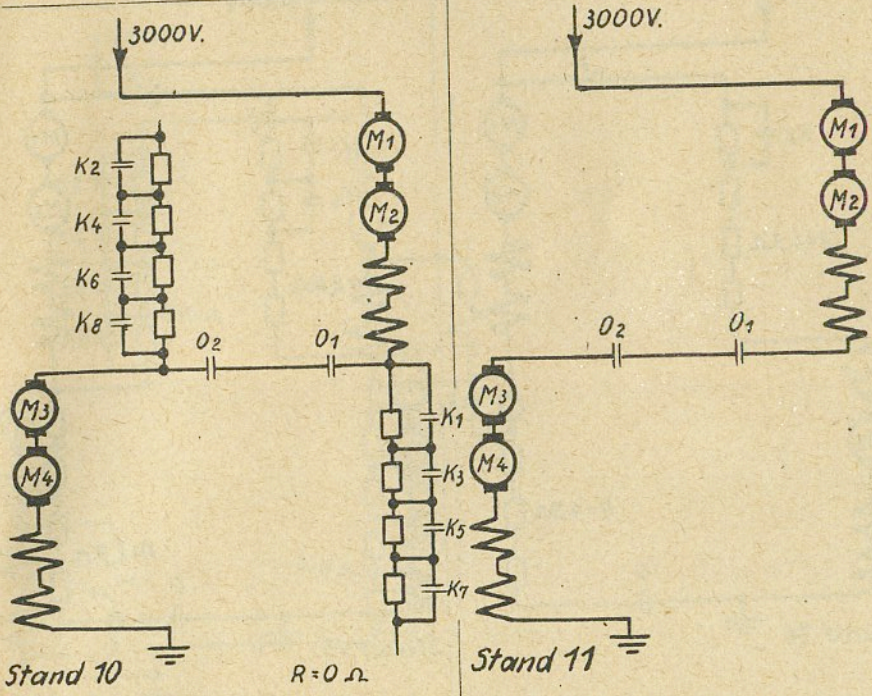
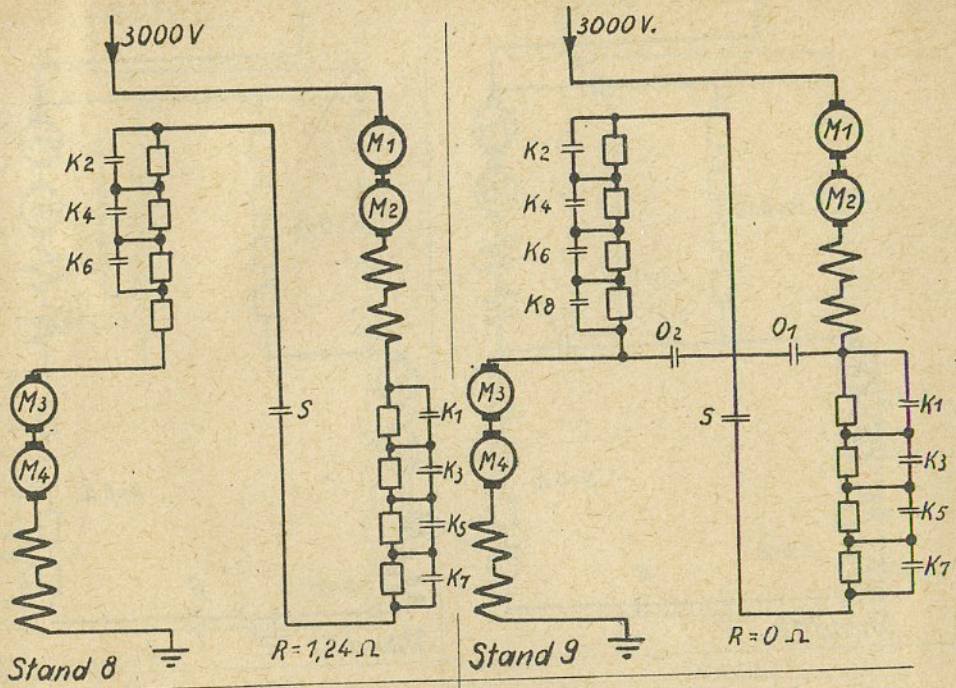


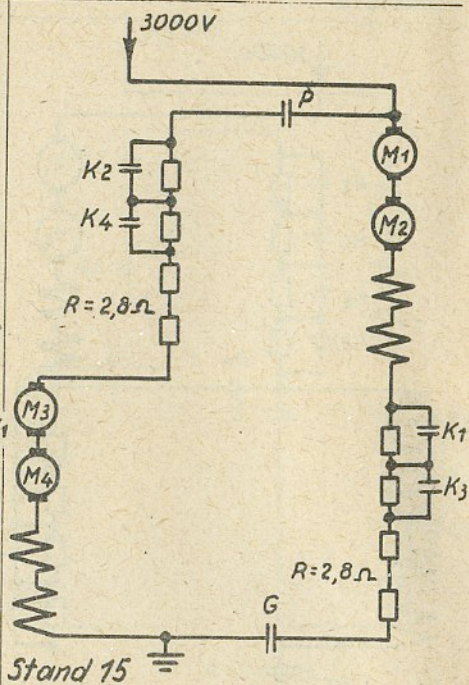
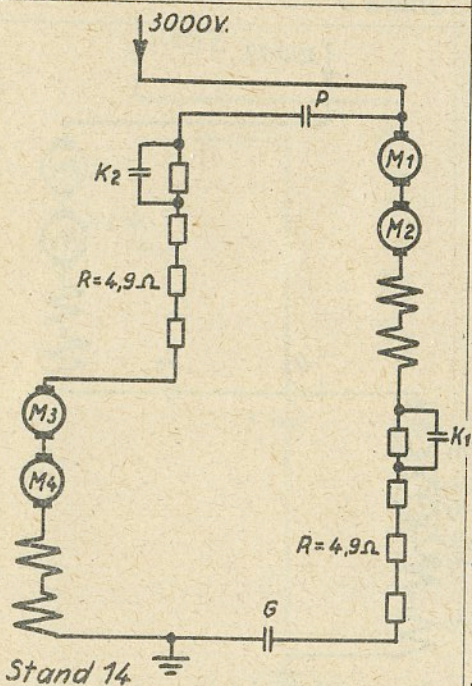
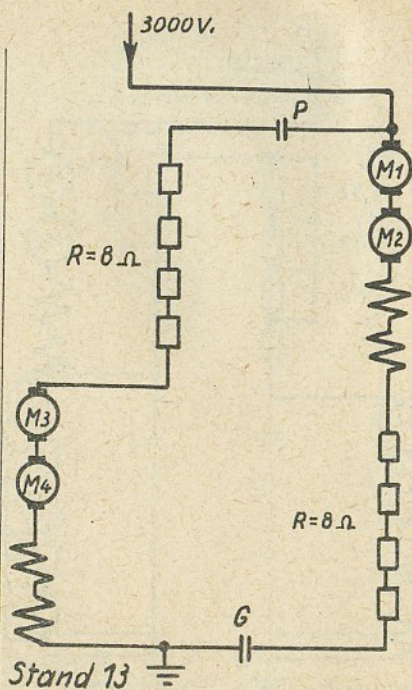
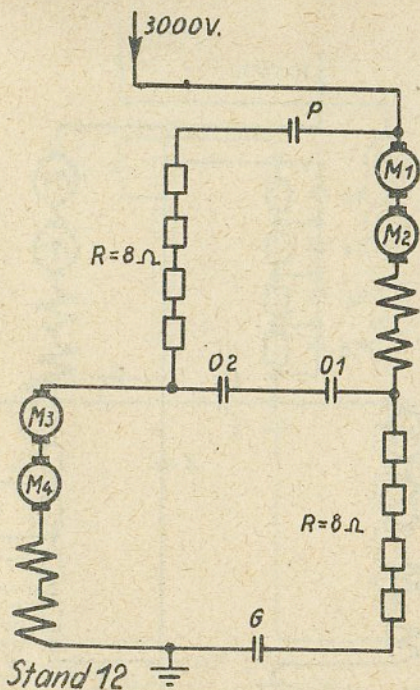
Fig. 30

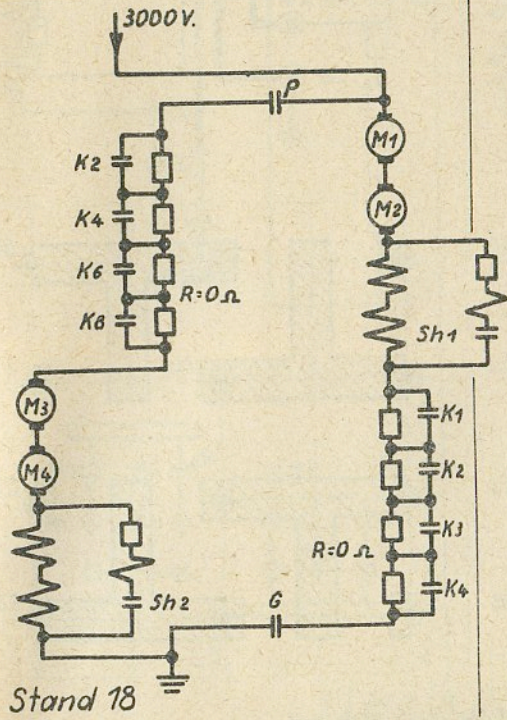
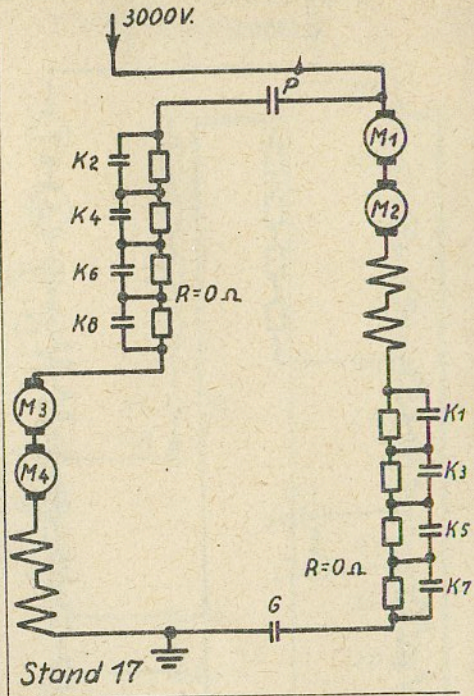
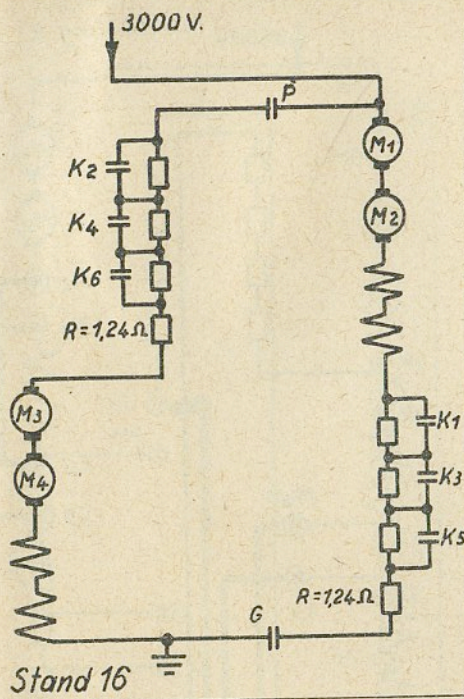






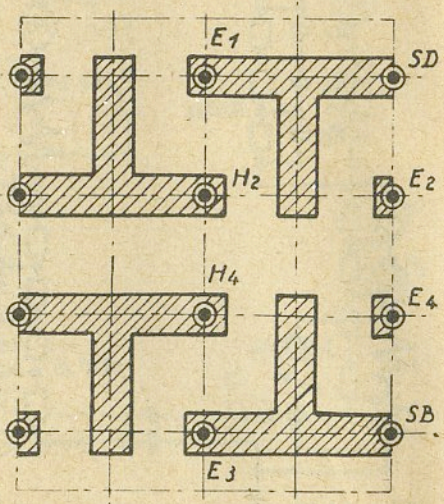
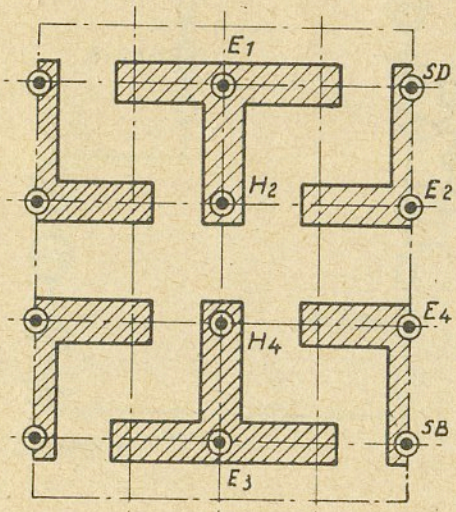
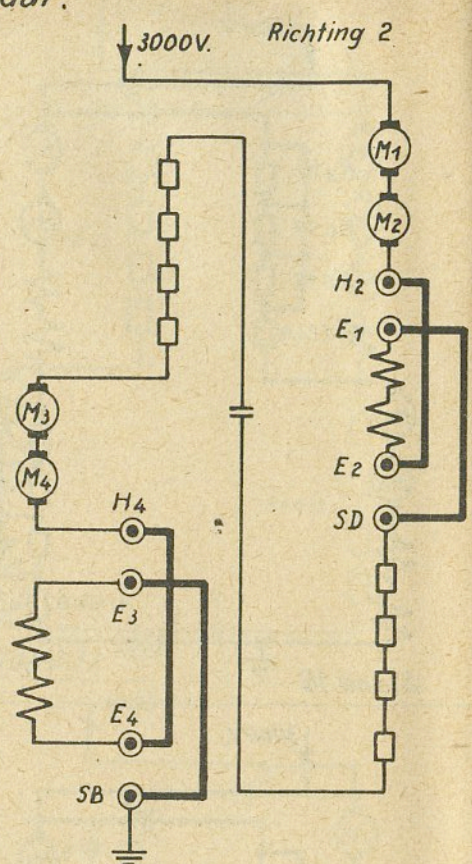
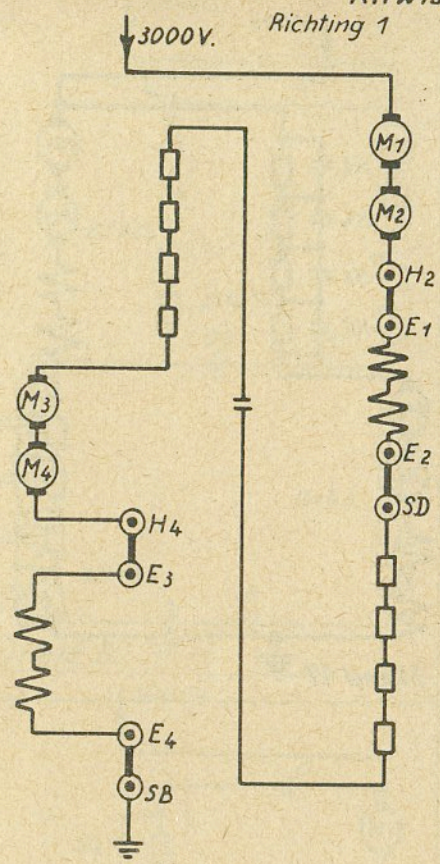
53 MA/B.00.01.03



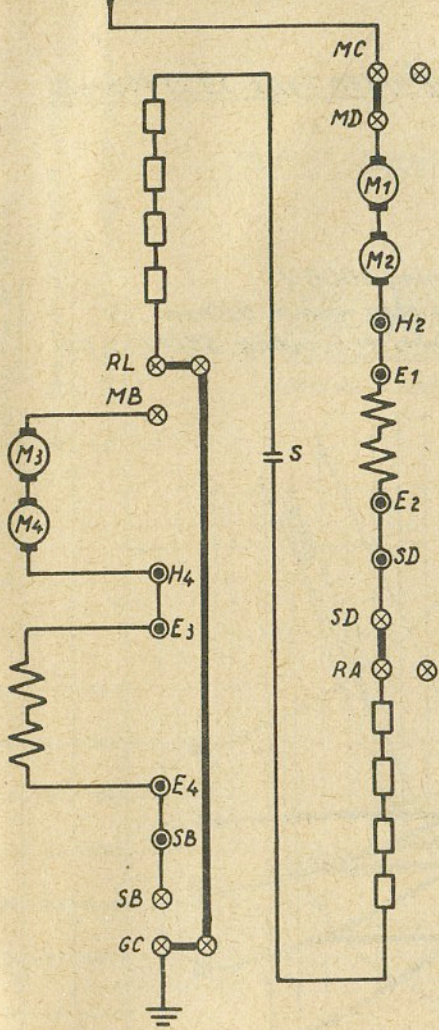


53 MA/B.00.01.05

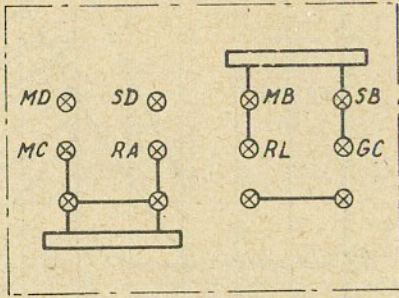
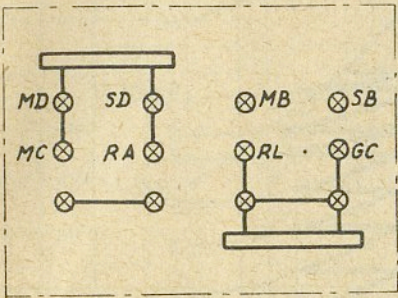
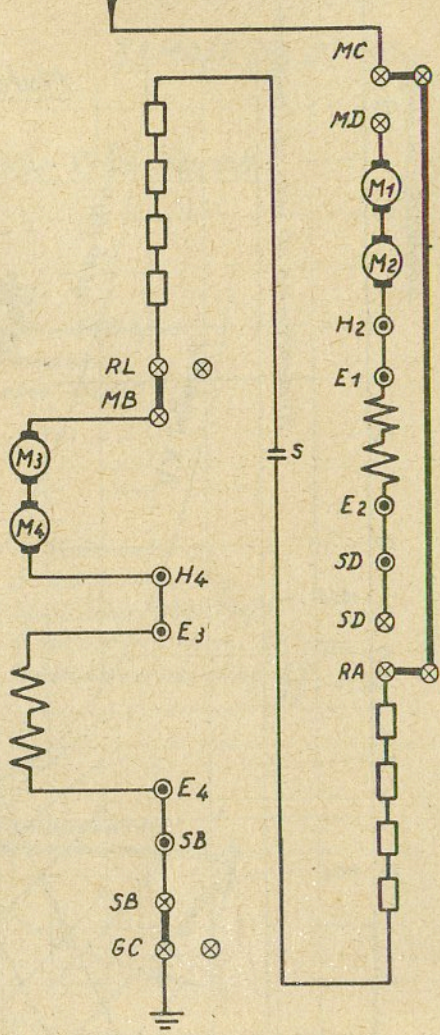
Ritwisselaar.



Motor 1 en 2 in dienst.
3000V.



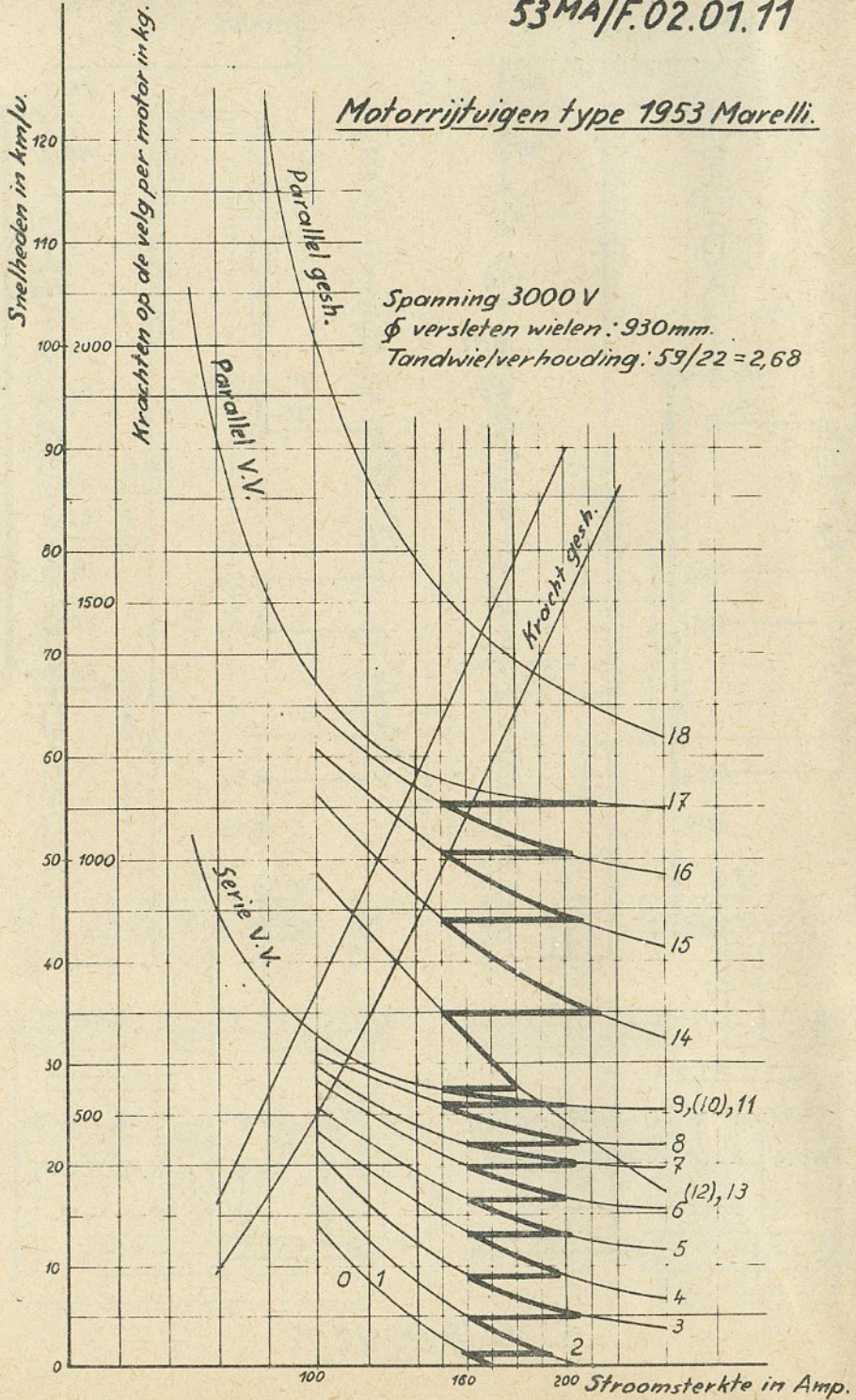
Motor 3 en 4 in dienst.
3000V.



53 MA/B.00.01.07

53MA/F.02.01.11

Motorrijtuigen type 1953 Marelli.



53MA/F.02.02.11

Motorrijtuigen type 1953 Marelli.

Eénuur-vermogen
200kw - 146A anker - 900 t/min.
Aanhoudend vermogen.
160 kw - 108A anker - 1000 t/min.

Snelheden in km/u.
Rendement met tandwielen.
Krachten op de velg per motor in kg.

