

NATIONALE MAATSCHAPPIJ DER BELGISCHE SPOORWEGEN



**Boekje HLT**

Deel **12** — Electrische tractie

Motorrijtuigen type 1962



**Figuren**



## Motorrijtuigen type 1962.

---

### LIJST DER TEKENINGEN EN SCHEMA'S.

Fig. 1 tot 36  
en 24bis, 24ter, 27bis

Tekeningen 62/B. 00.01.01  
tot  
62/B. 00.01.08

Kurven 62/F. 02.01.11  
62/F. 02.02.13

Schema's 62/A. 00.01.01  
62/D. 00.01.01  
02  
03  
04  
62/G. 00.01.01.

1875  
Nov 11

MEMORANDUM

TO THE PRESIDENT

FROM THE SECRETARY

RE: [illegible]

[illegible]

[illegible]

[illegible]

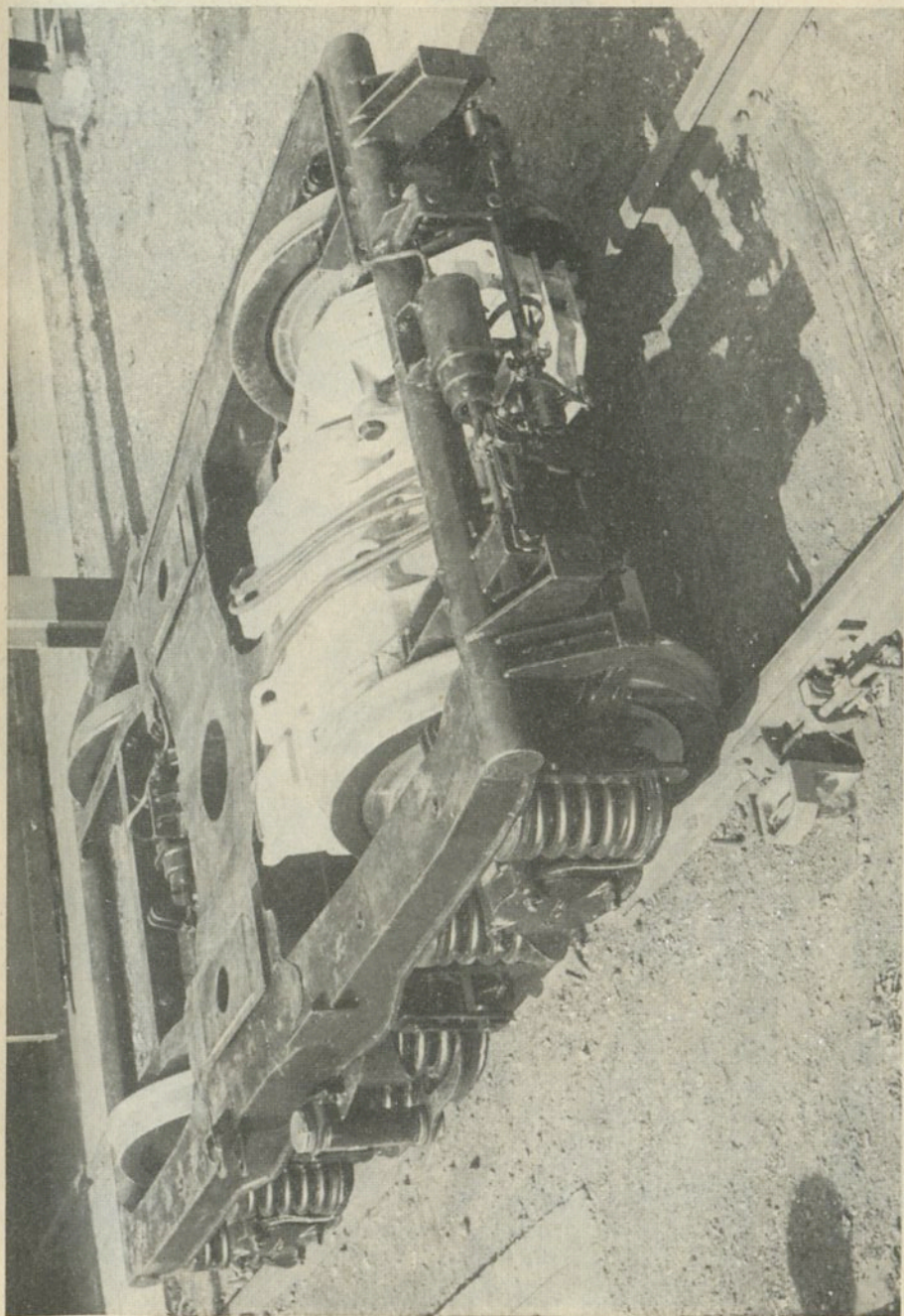
[illegible]

[illegible]

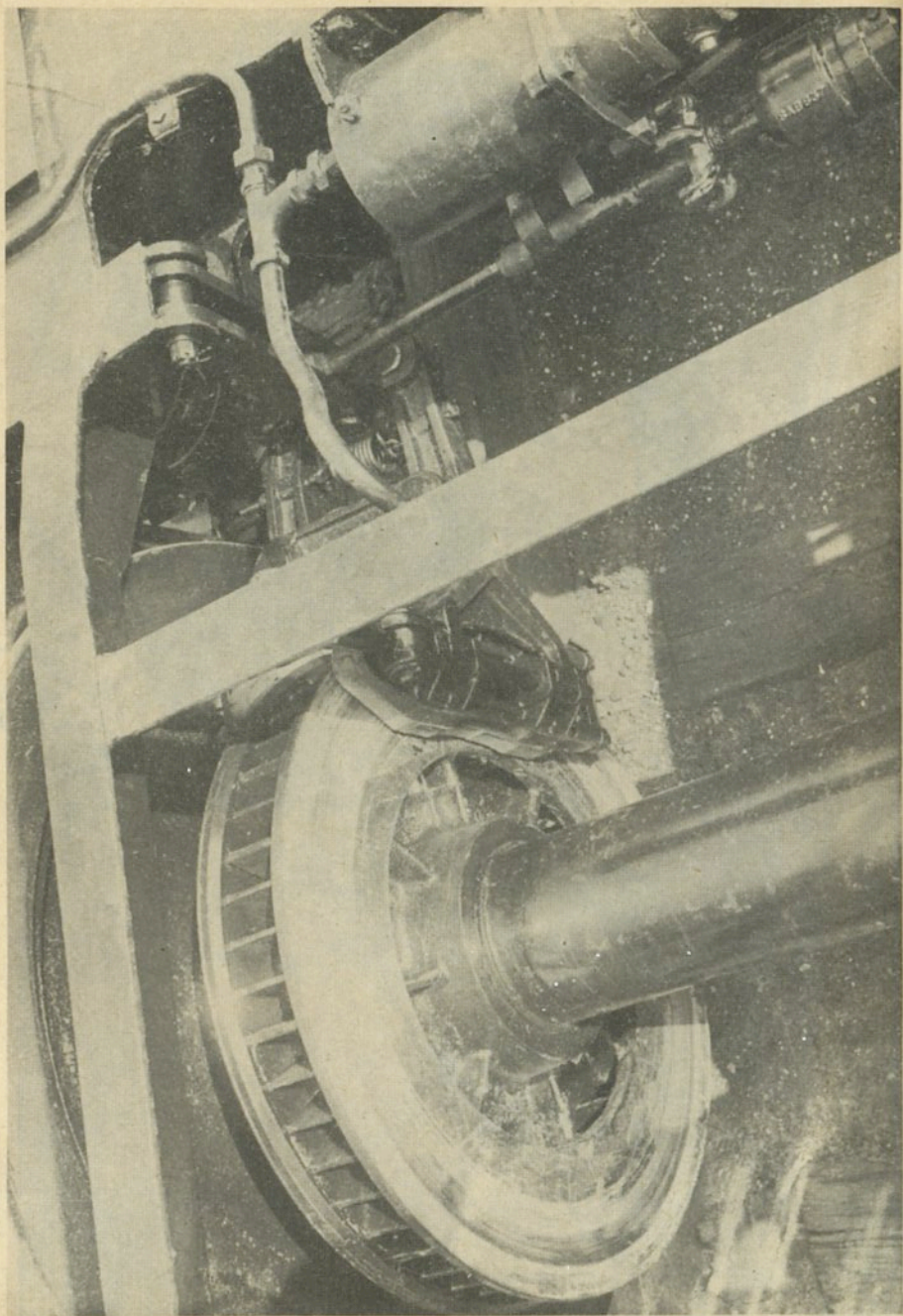
[illegible]

[illegible]

[illegible]



*Fig. 7*



*Fig. 1 bis.*

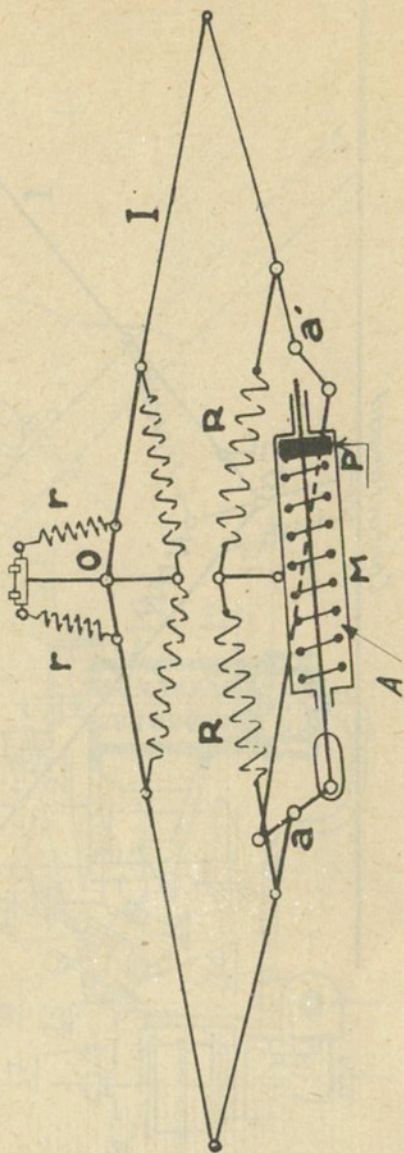


Fig. 2

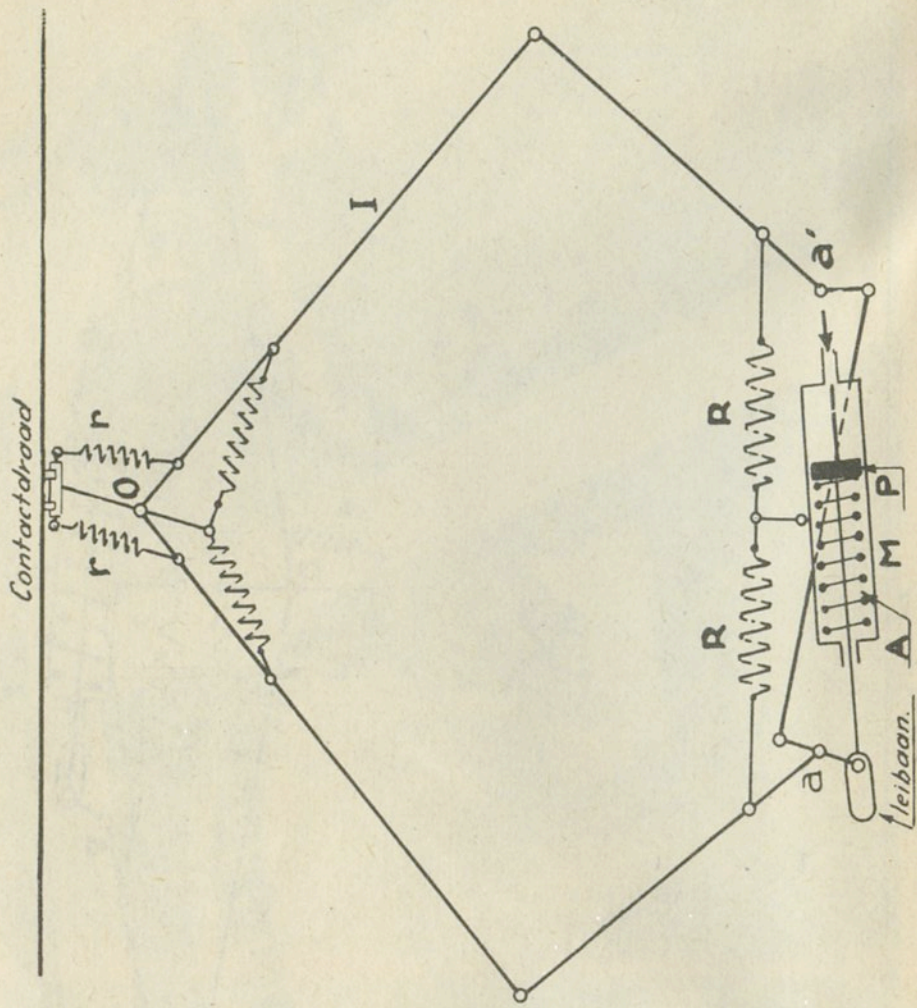


Fig. 3



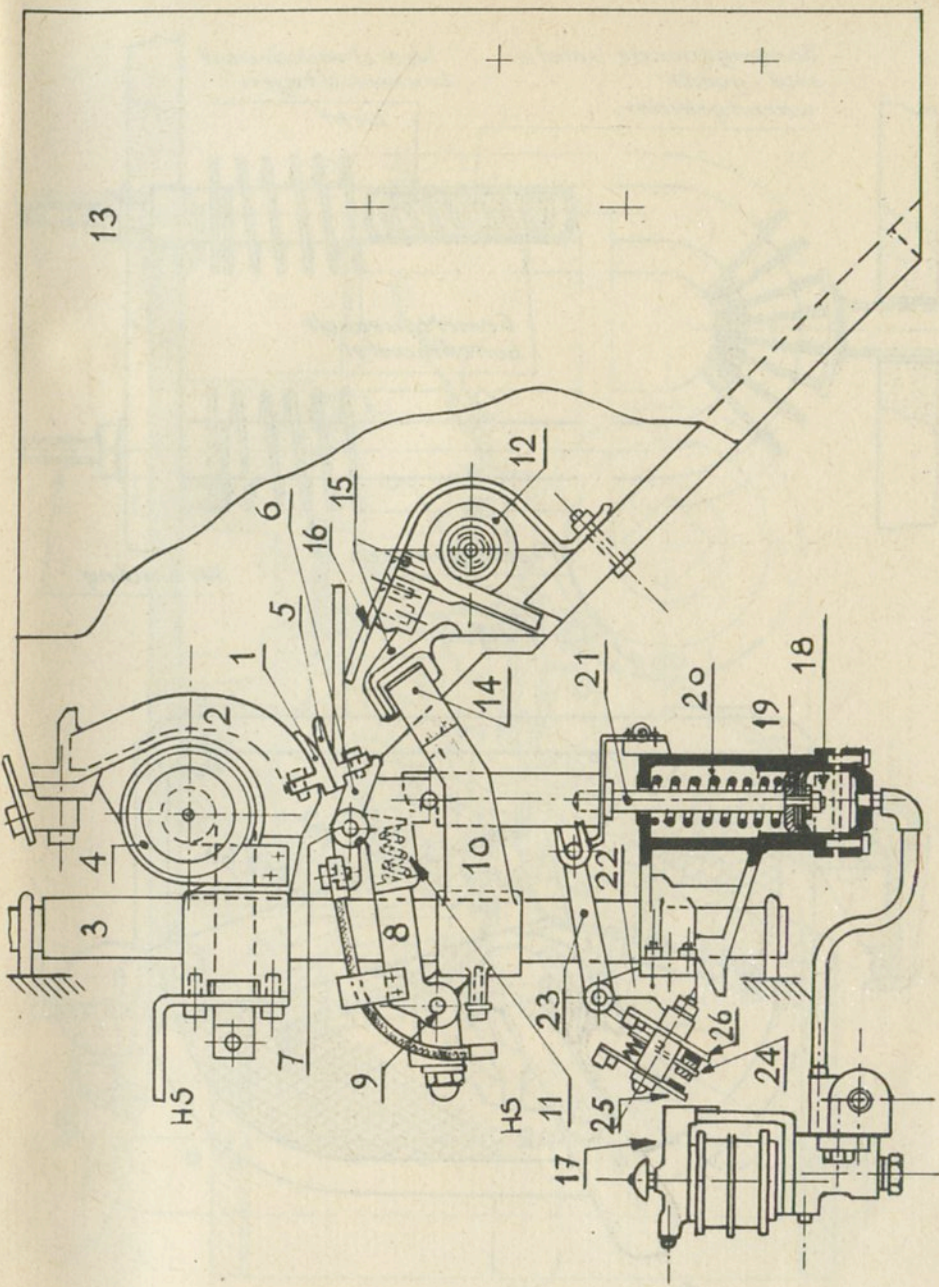


Fig. 4

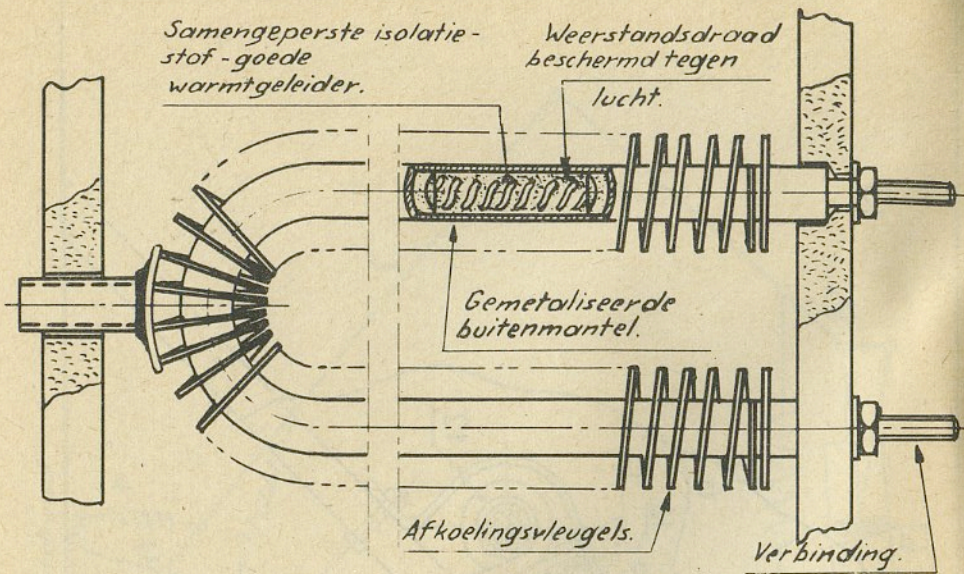


Fig. 5

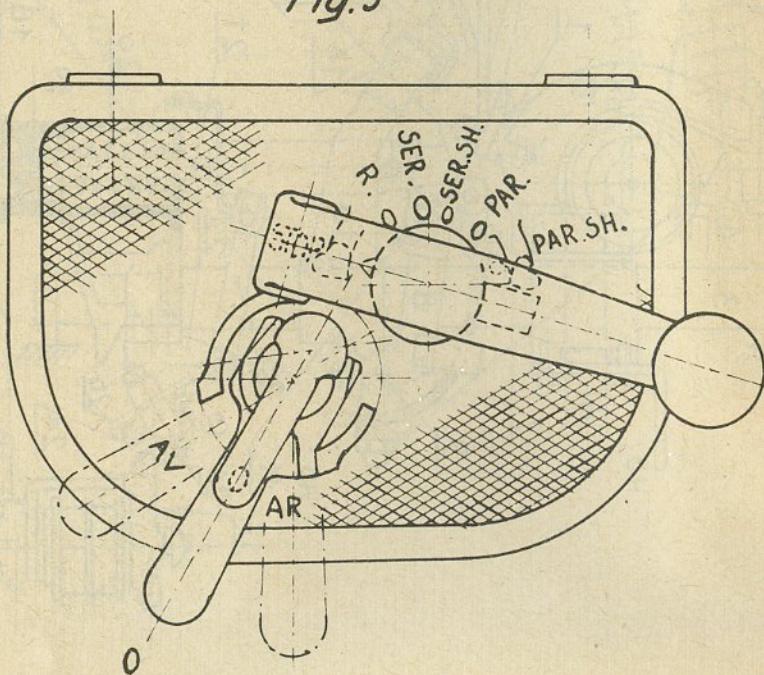


Fig. 6

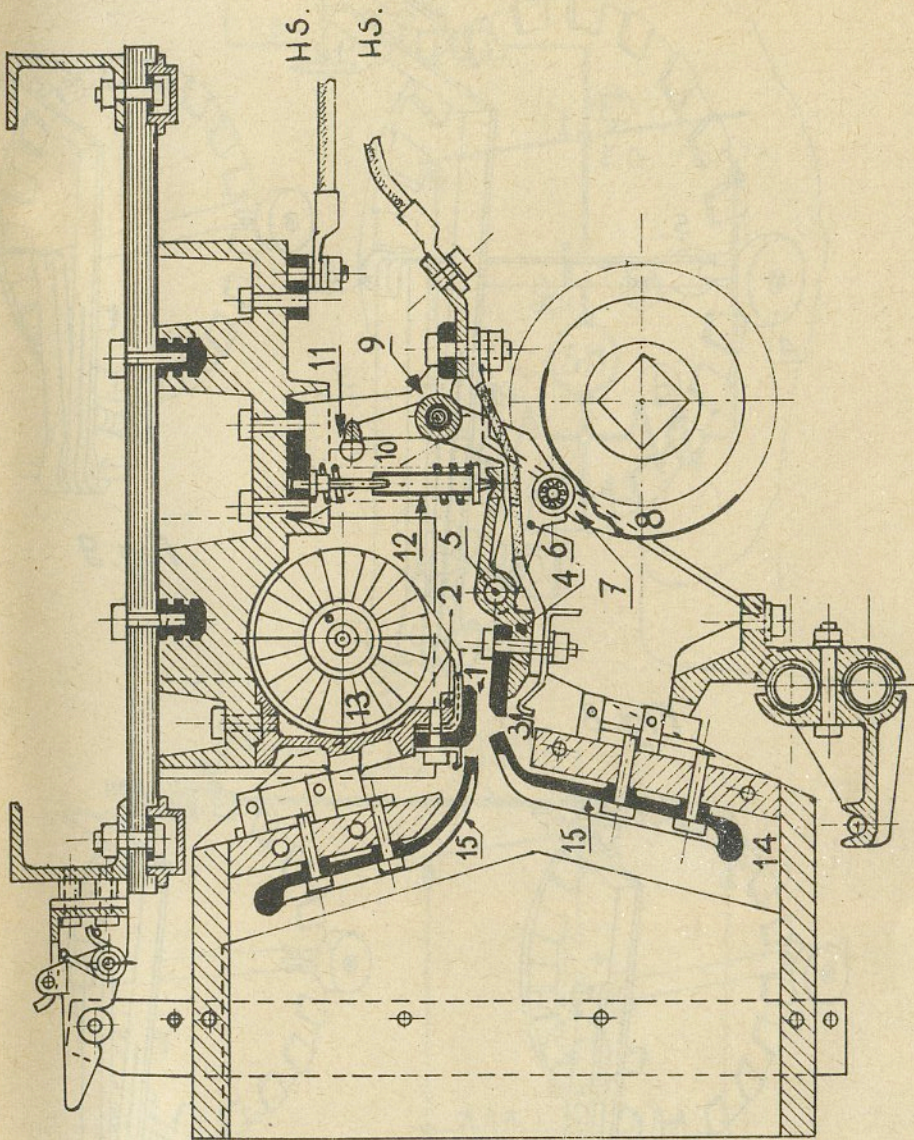


Fig. 7

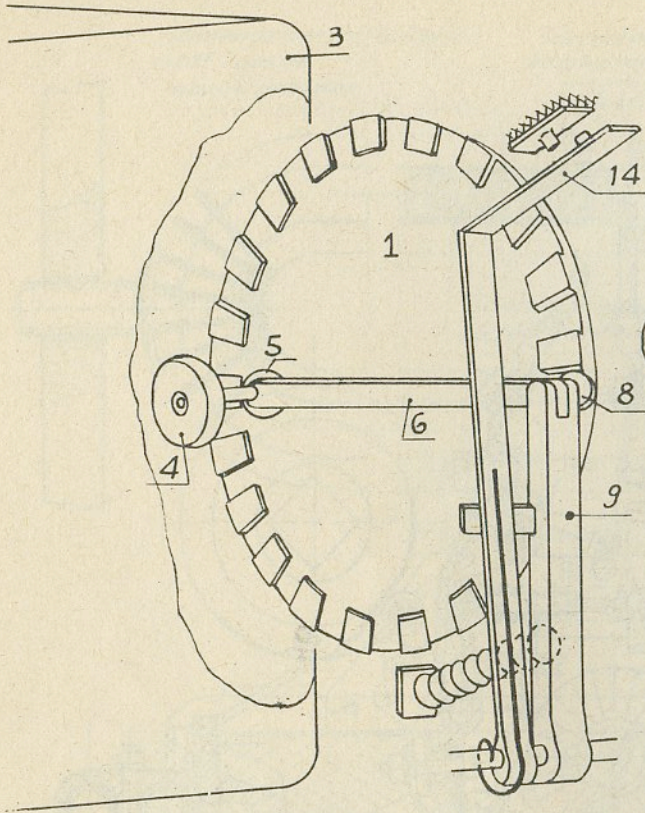


Fig. 8

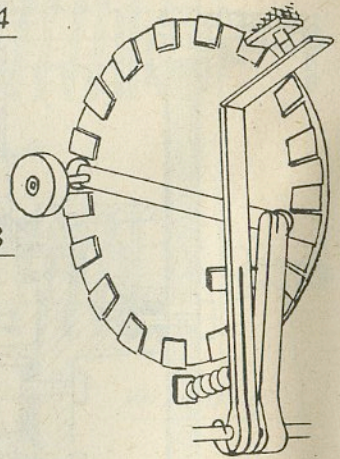


Fig. 9

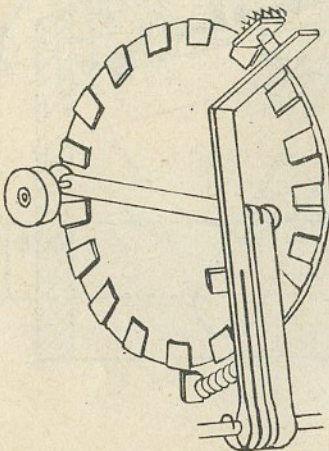


Fig. 10

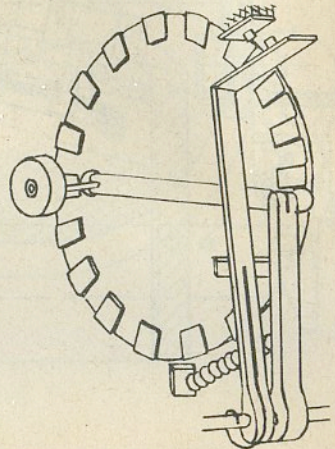


Fig. 11

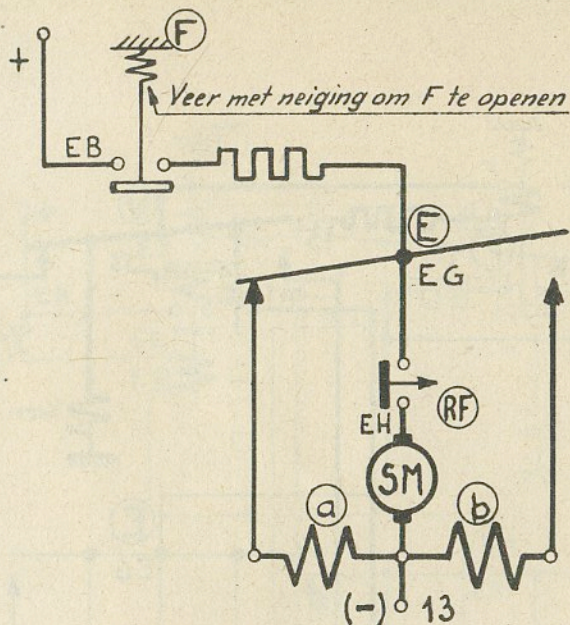


Fig. 12

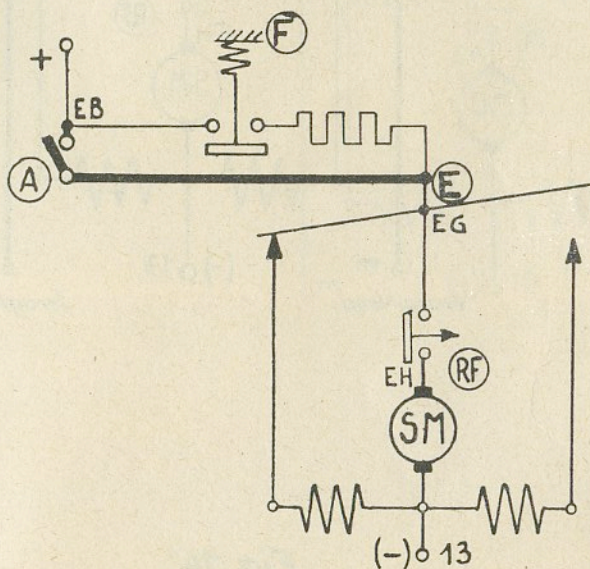


Fig. 13

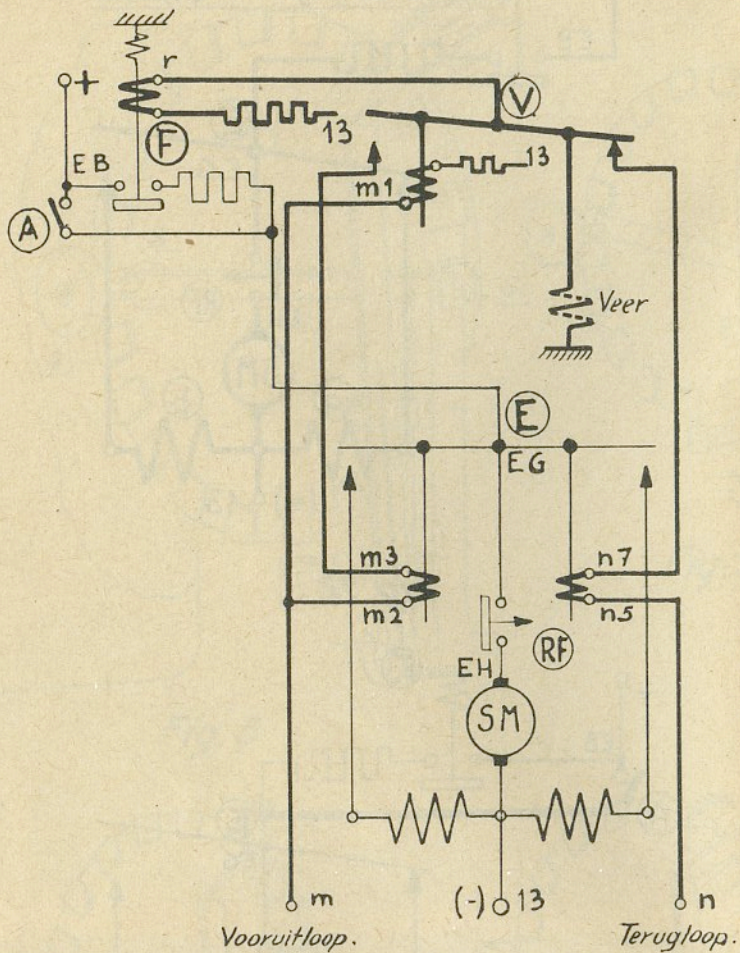


Fig. 14

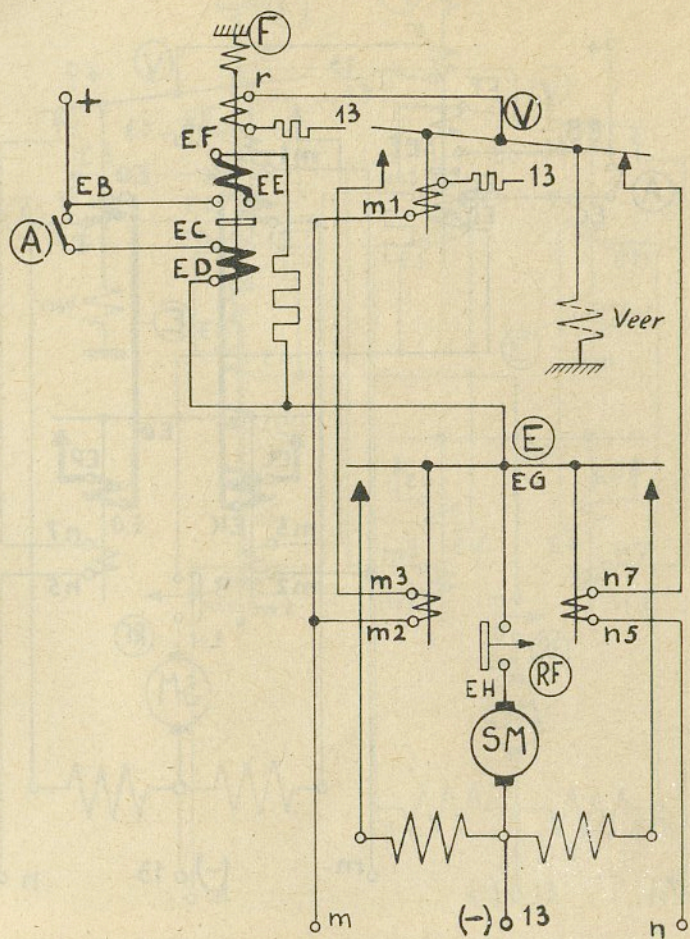


Fig. 15

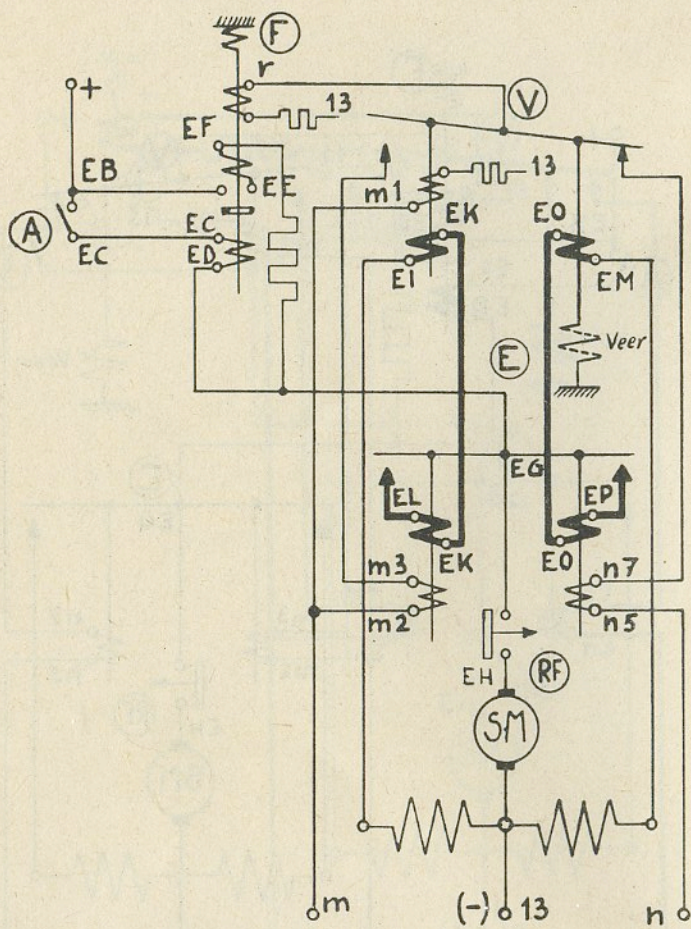


Fig. 16





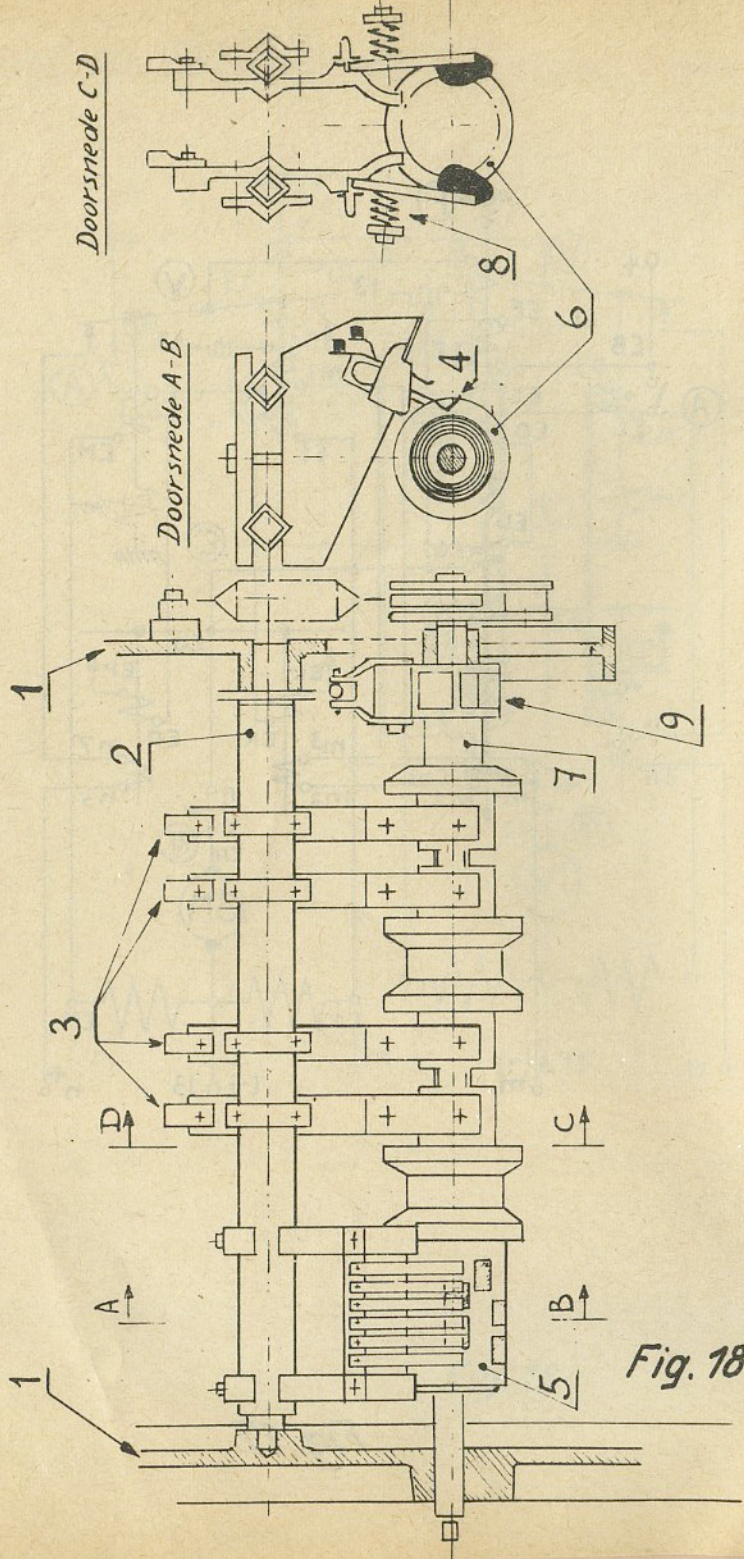
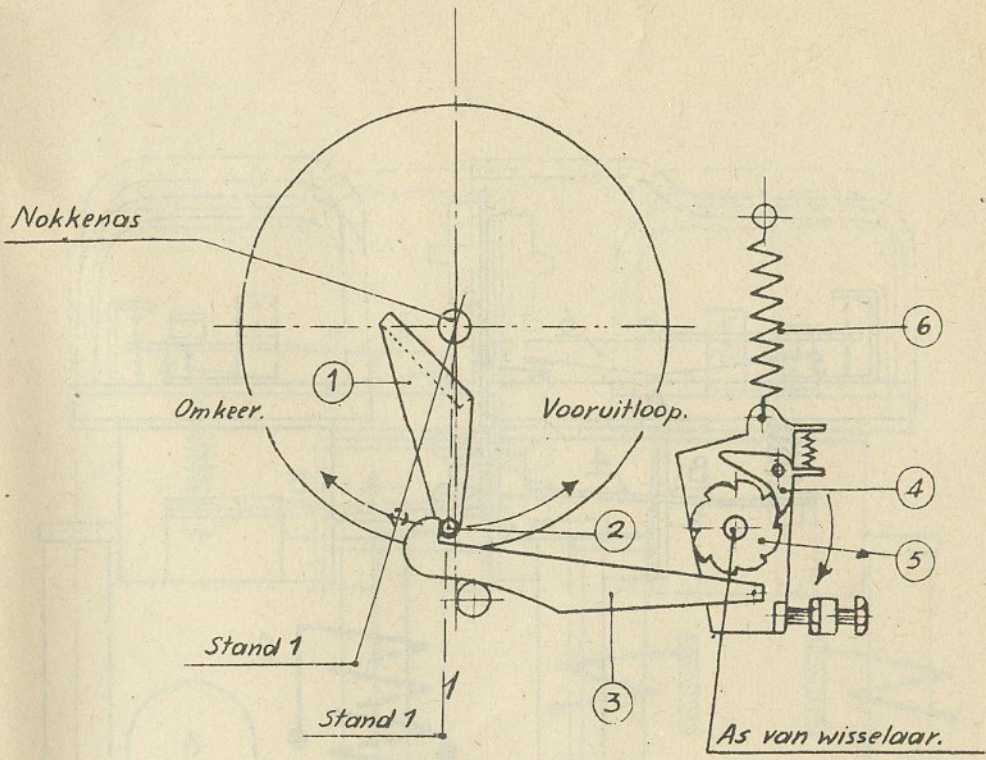


Fig. 18



Mechanisch samenstel van wisselaar.

Fig. 19

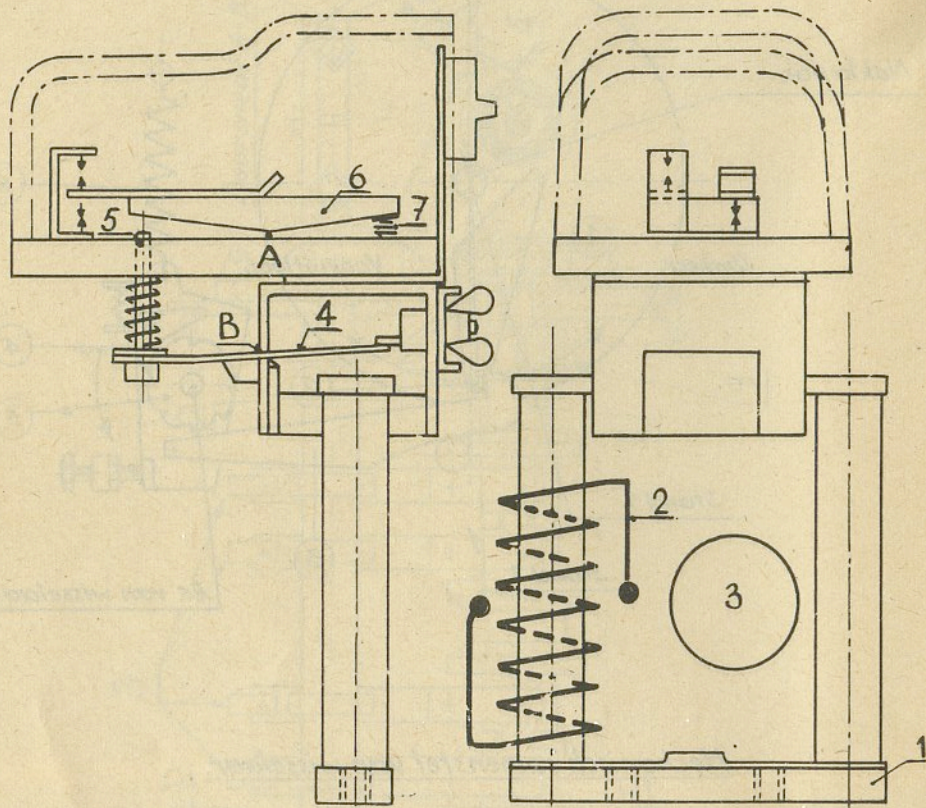


Fig. 20

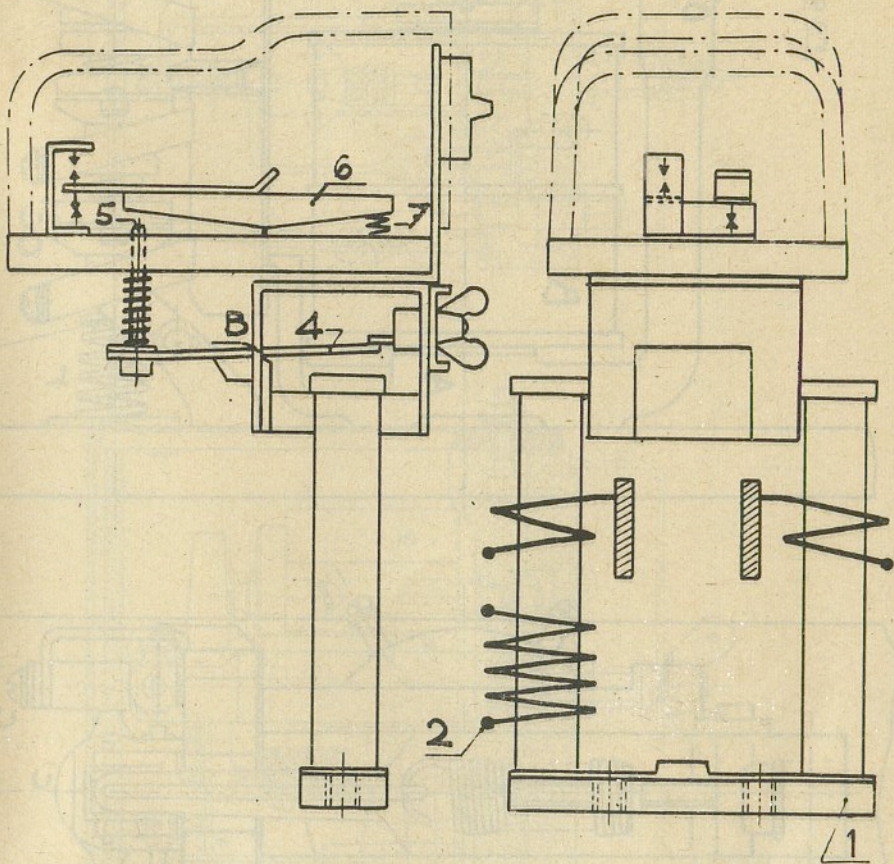


Fig. 21

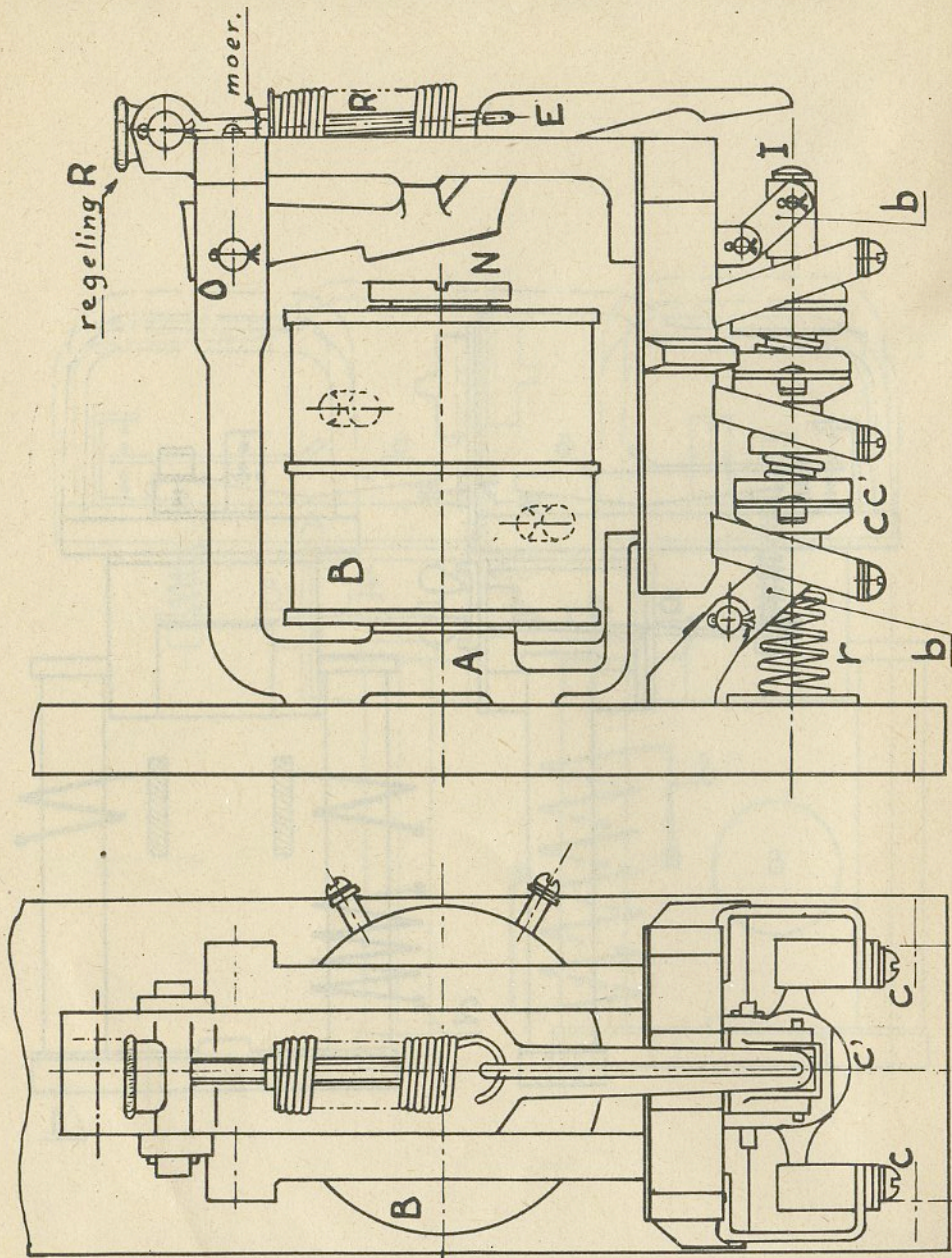


Fig. 22

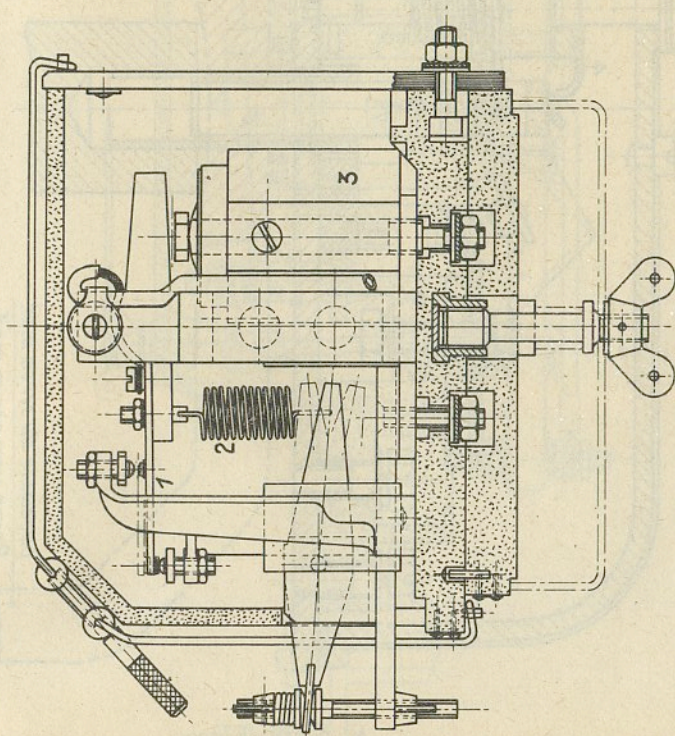
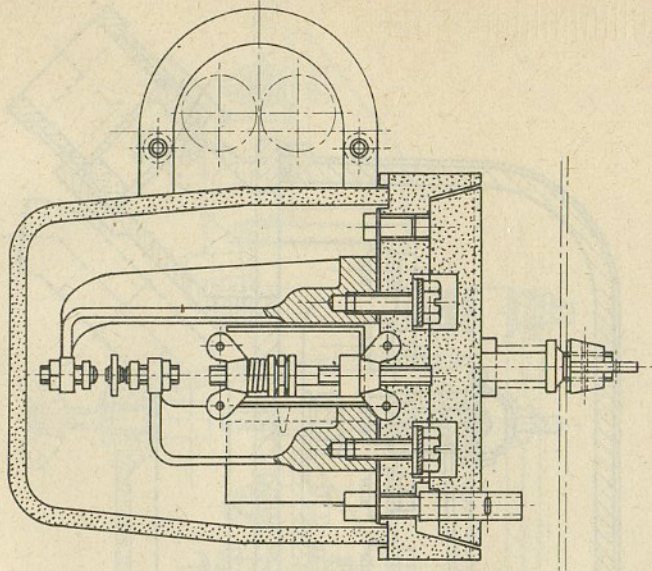
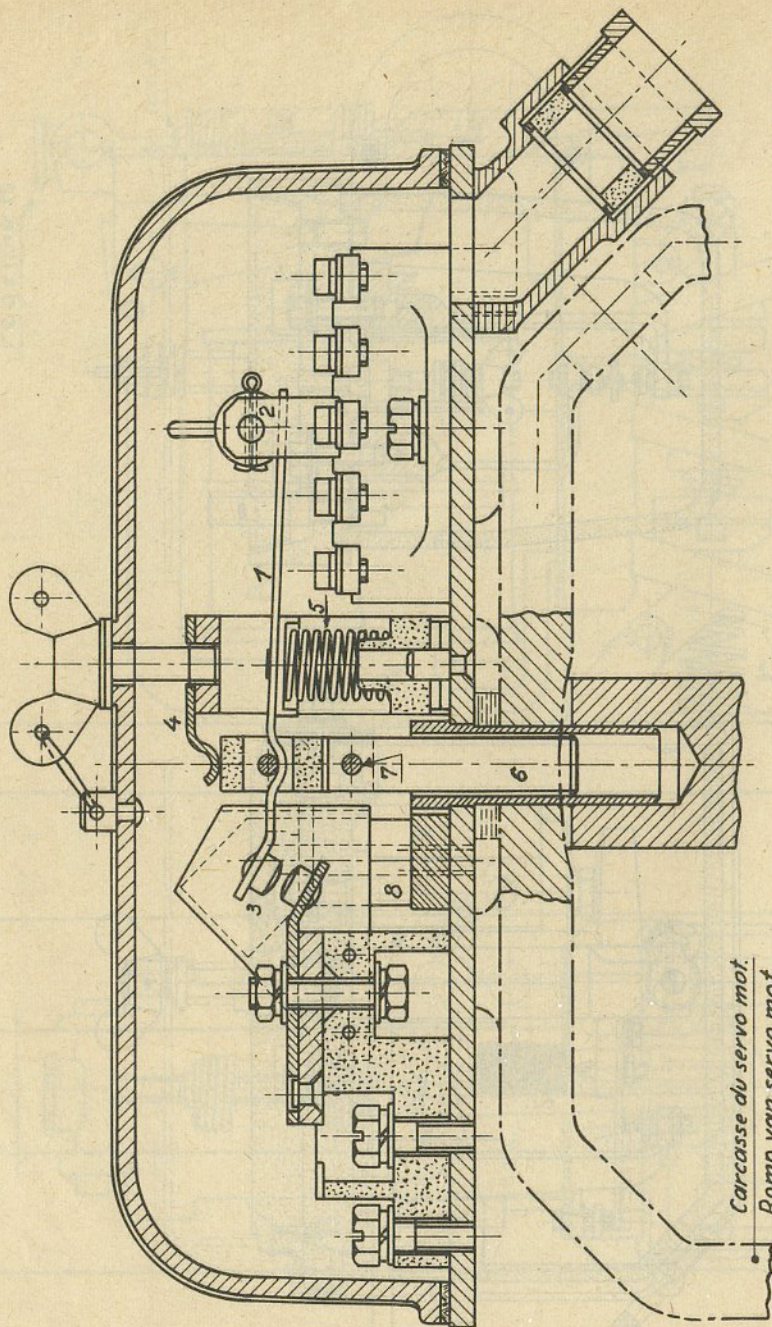


Fig. 23



*Carcasse du servo mot.  
Romp van servo mot.*

*Fig. 24*



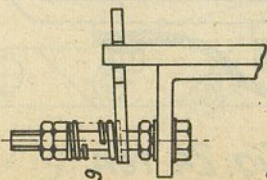
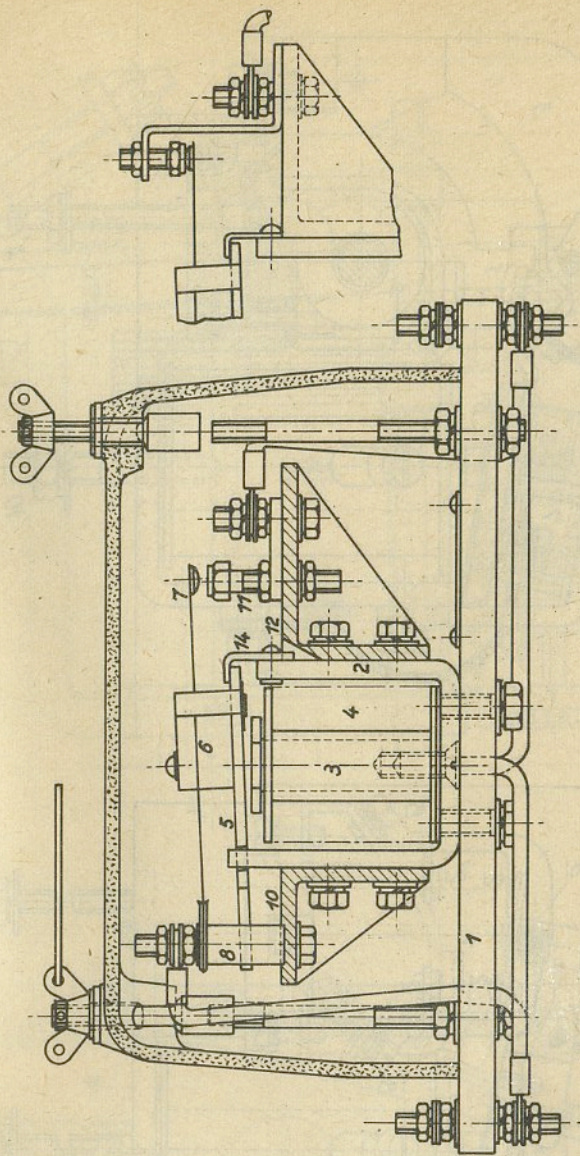


Fig. 24 bis.

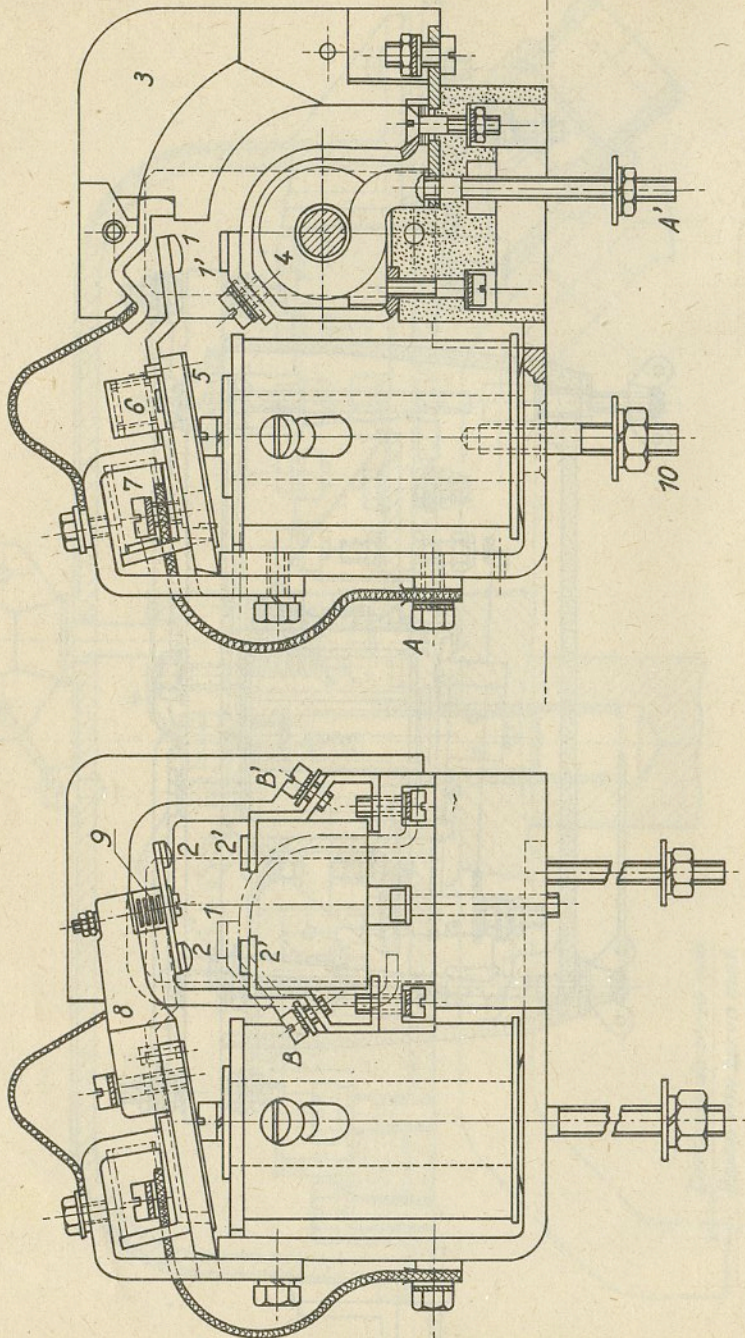


Fig. 24 ter.

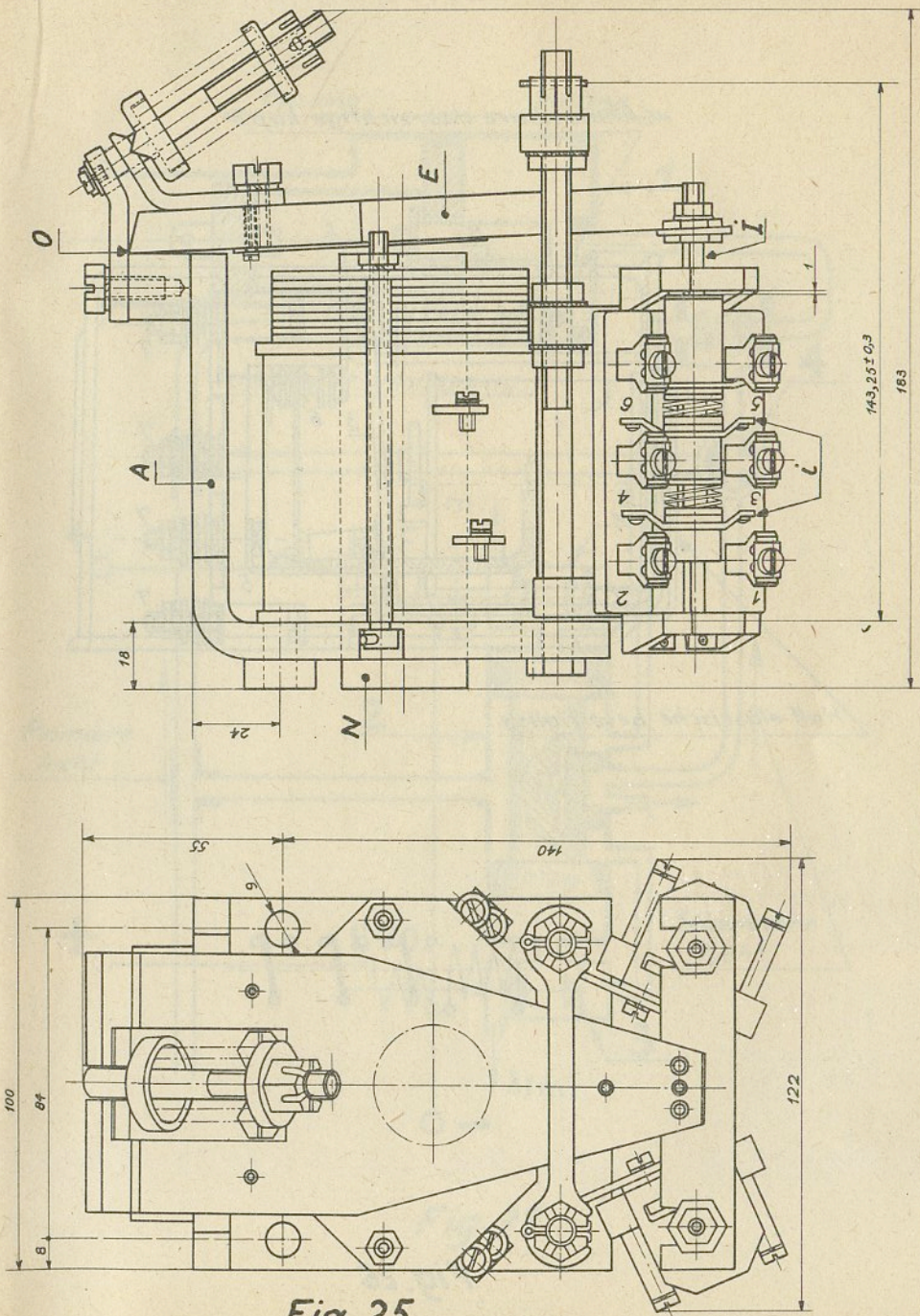
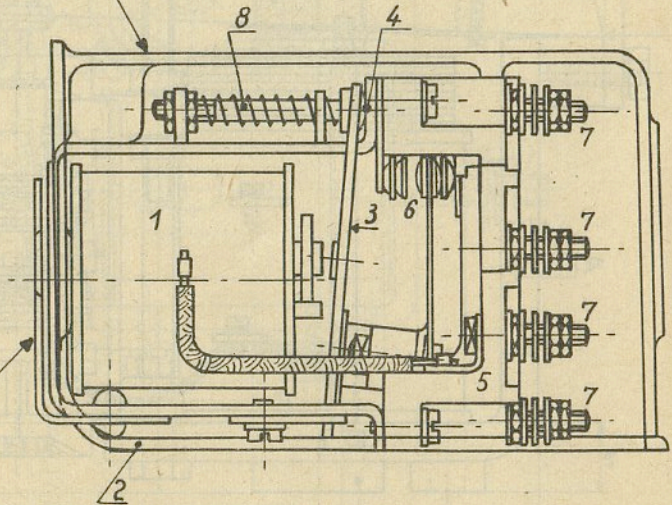
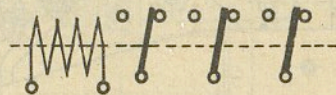


Fig. 25

Afneembare doorzichtige kap.



Half elastische bevestiging.



*Fig. 26*

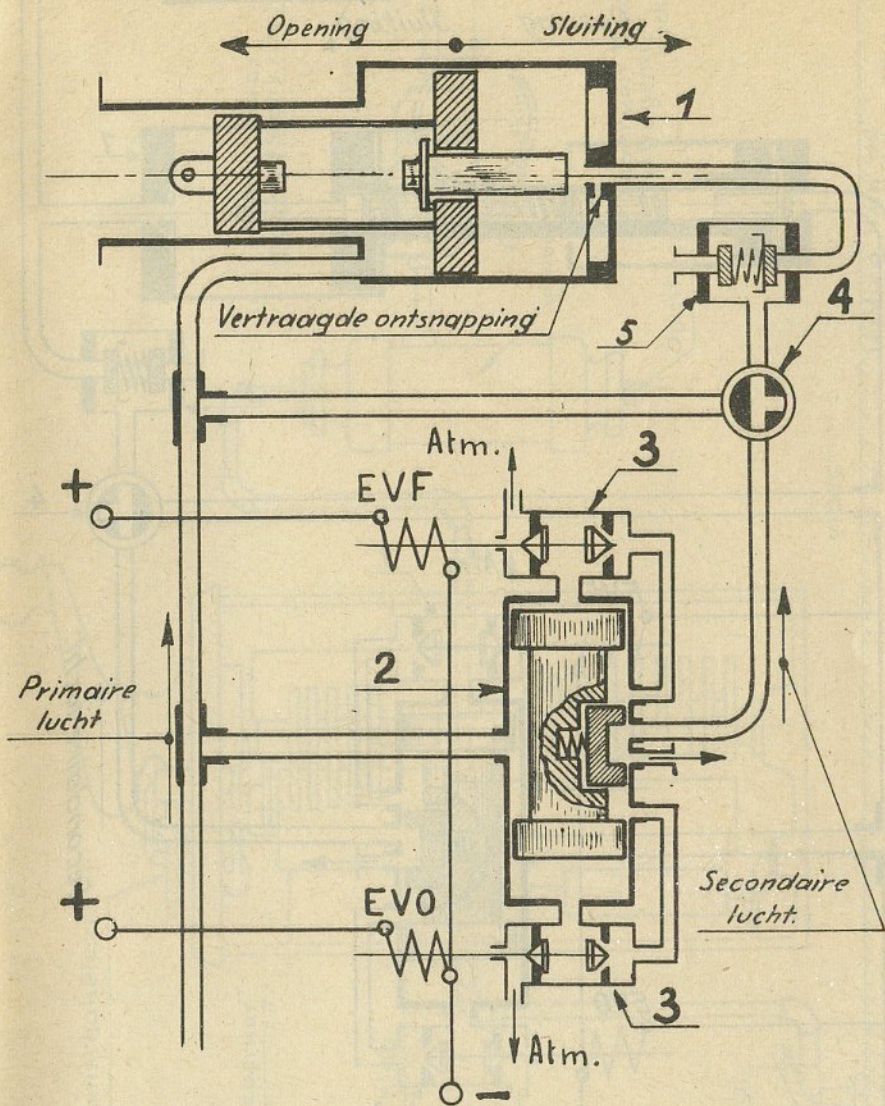


Fig. 27

Voetredencylinder pakwagen.

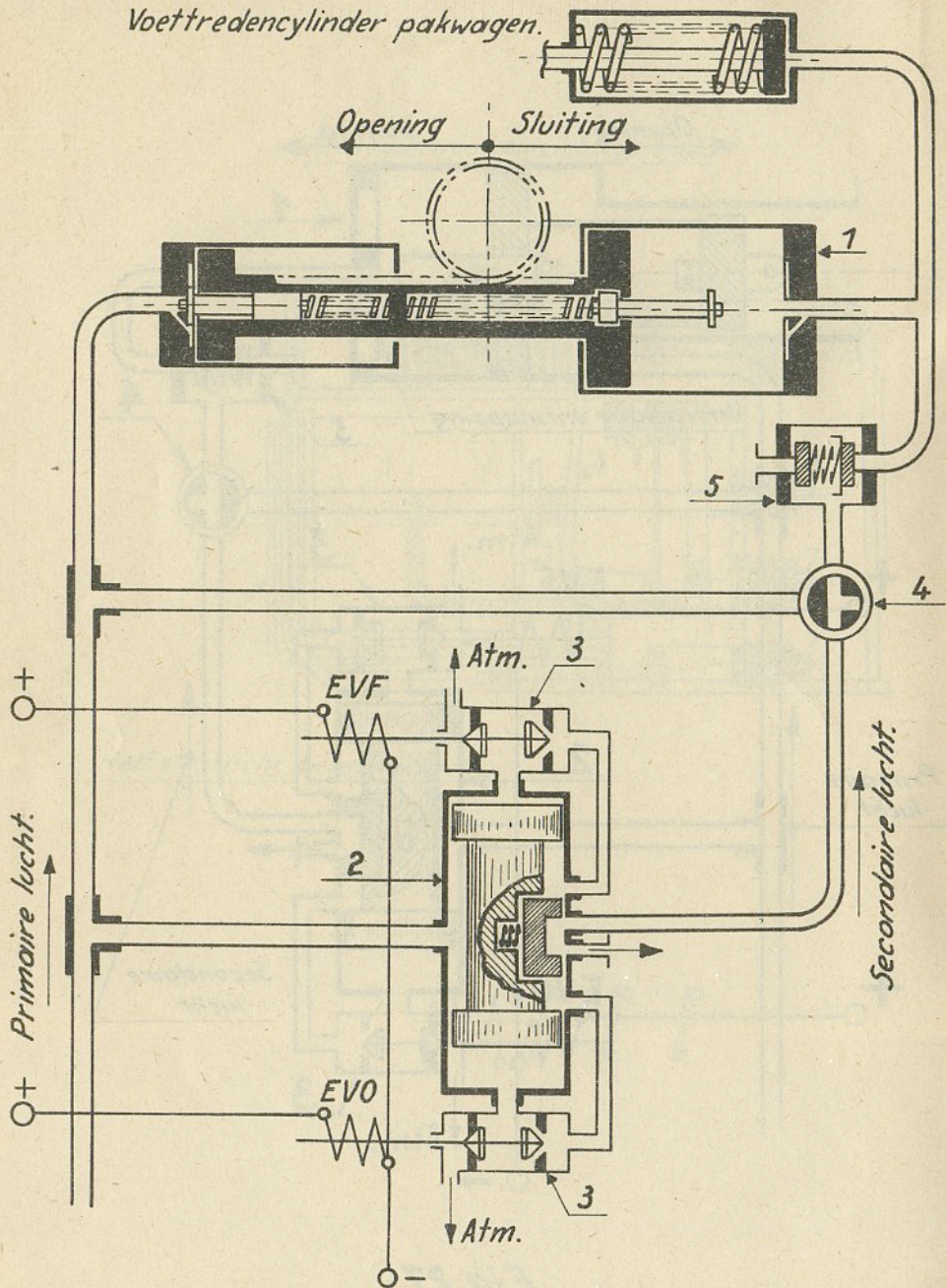


Fig.27 bis.

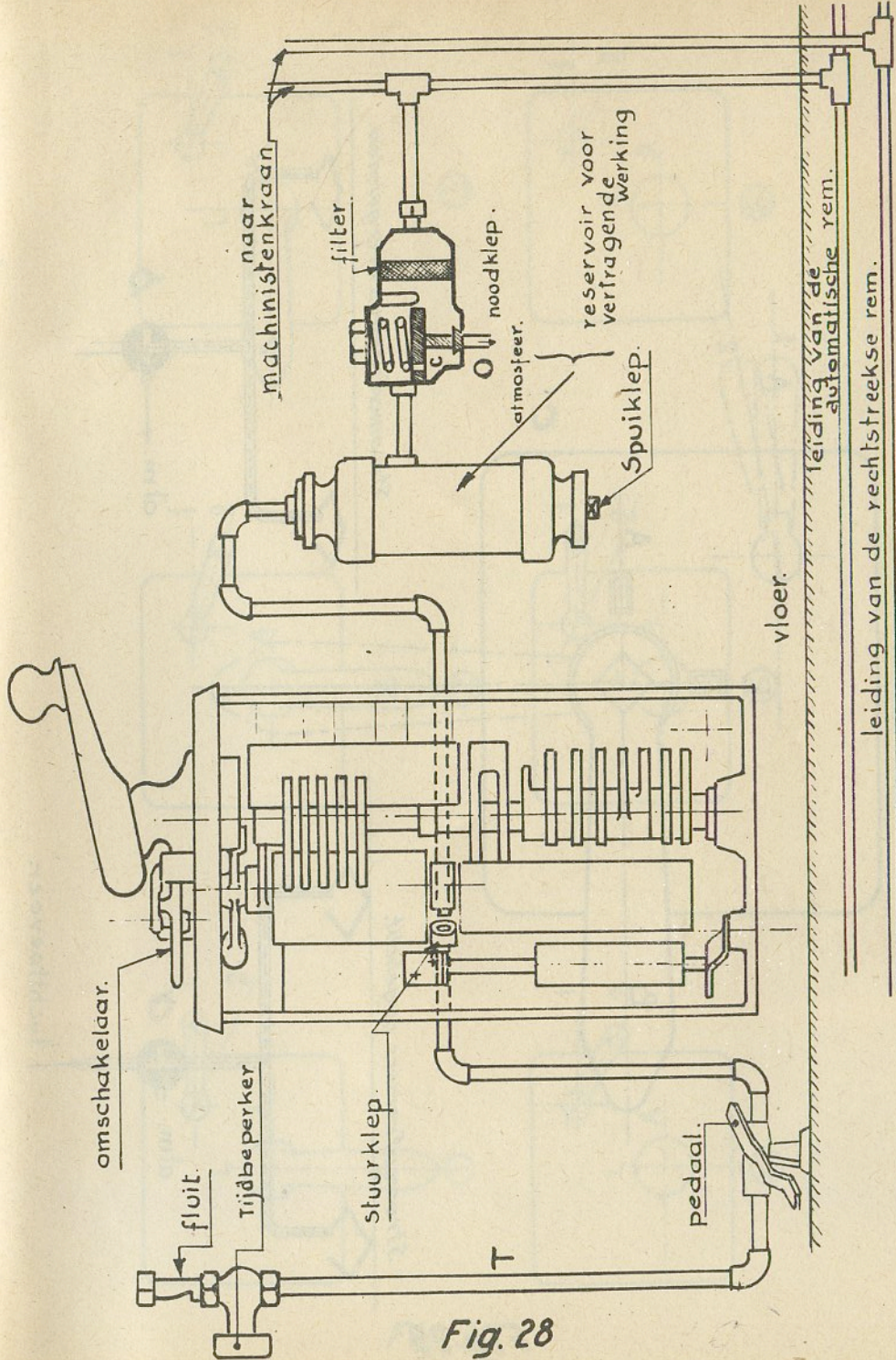
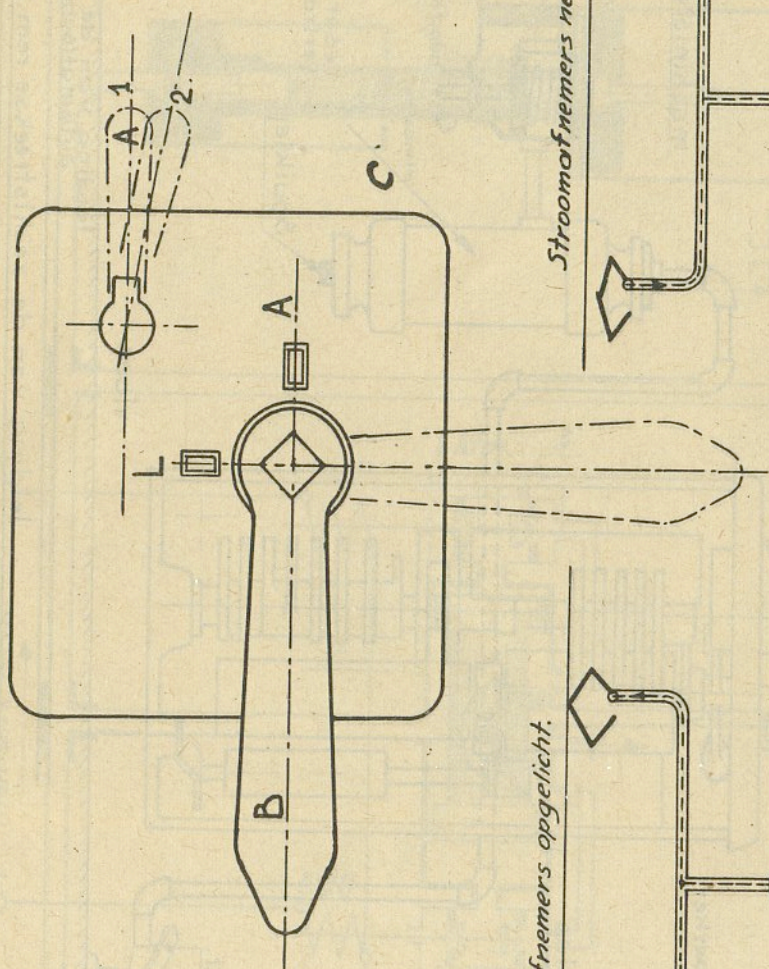
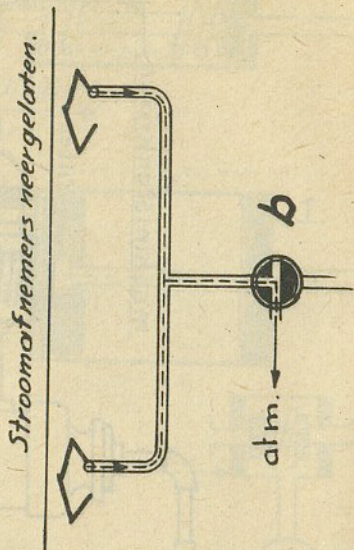


Fig. 28



*Stroomafnemers opgelicht.*



*luchttoevoer.*

atm. + a

Fig. 29



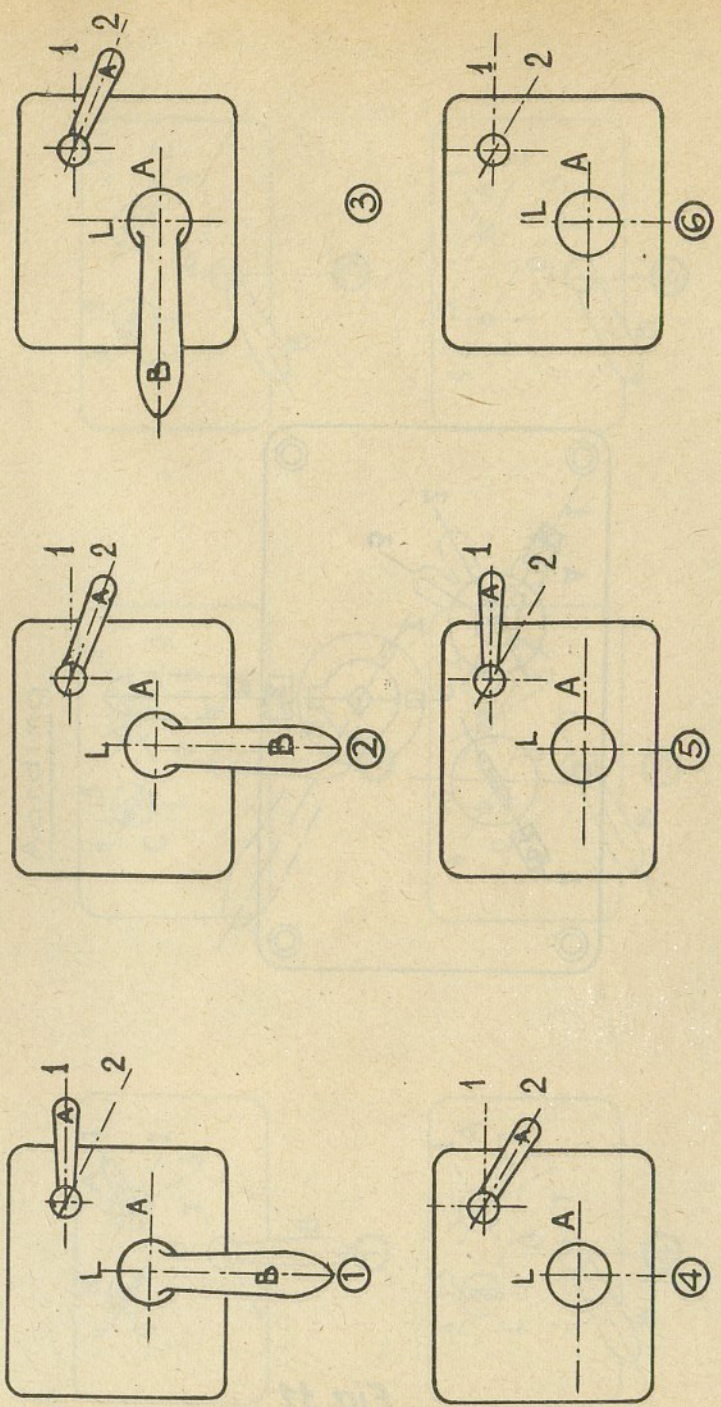


Fig. 30

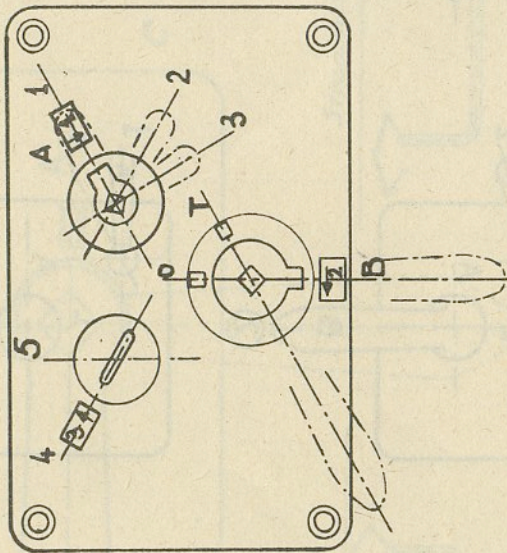


Fig. 31

Aarding.

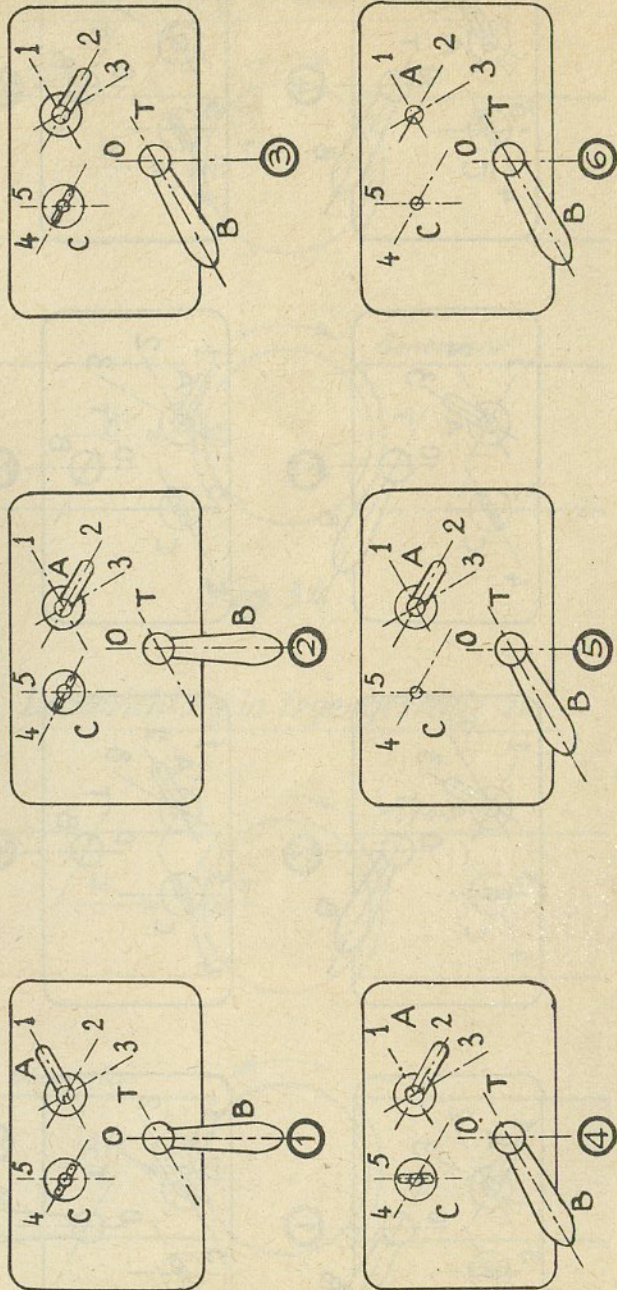


Fig. 32

Terugplaatsing in normale stand.

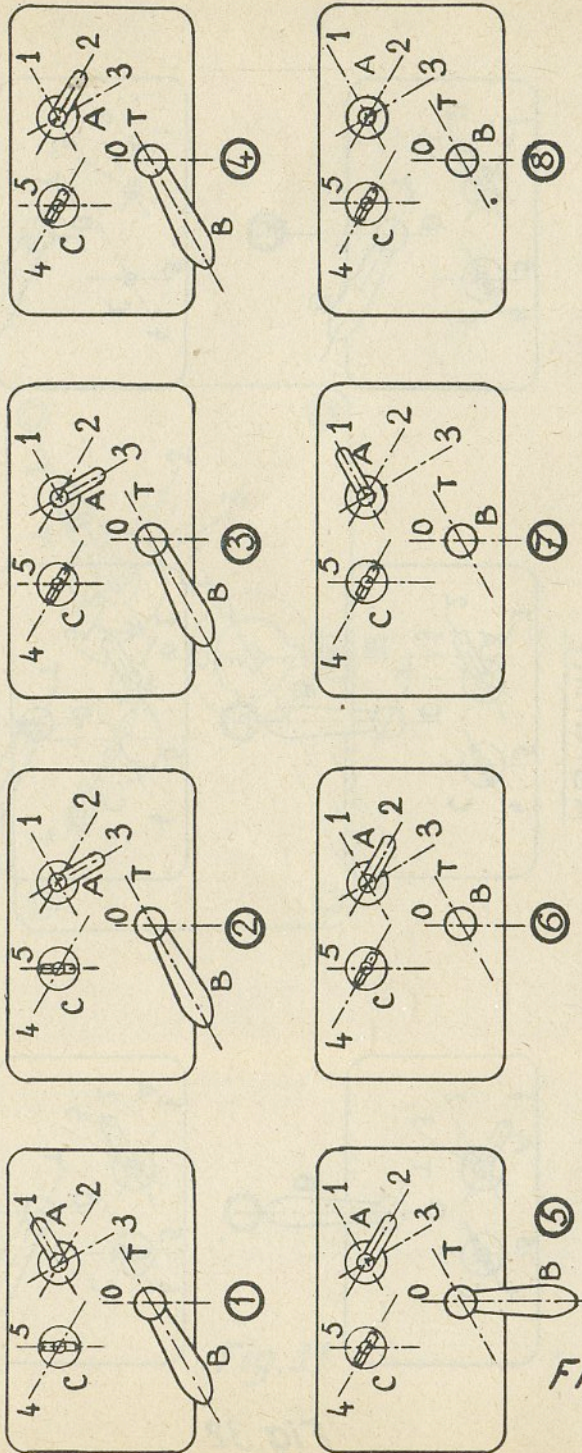


Fig. 33

Draairichting in dezelfde zin.

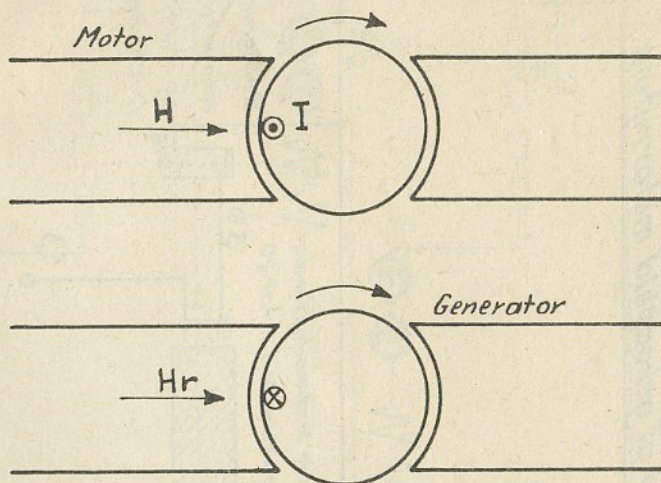


Fig. 34

Draairichting in tegengestelde zin.

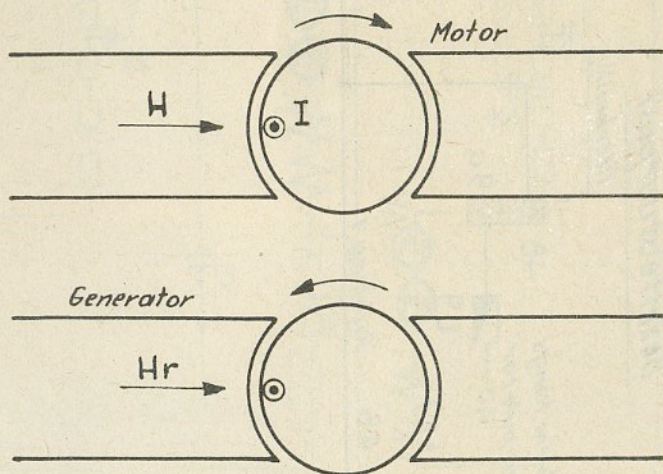


Fig. 35

Motorrijtuig vanwaar men  
bestuurt of gekoppeld motorrijtuig.

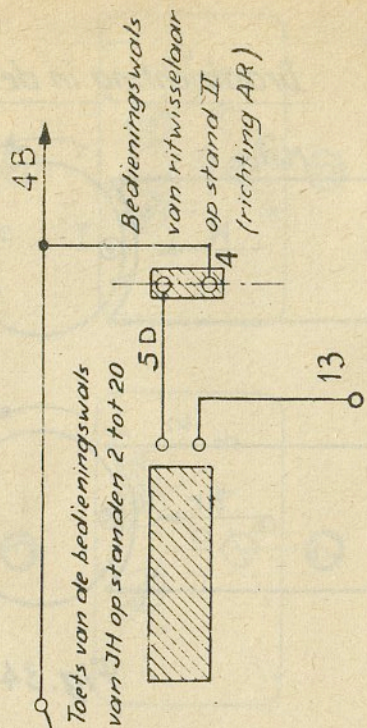
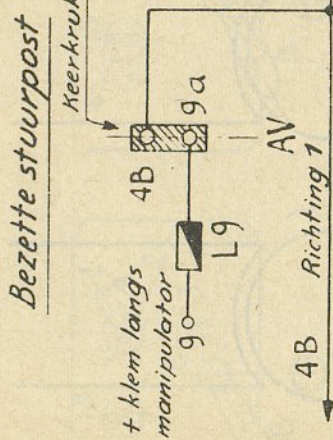
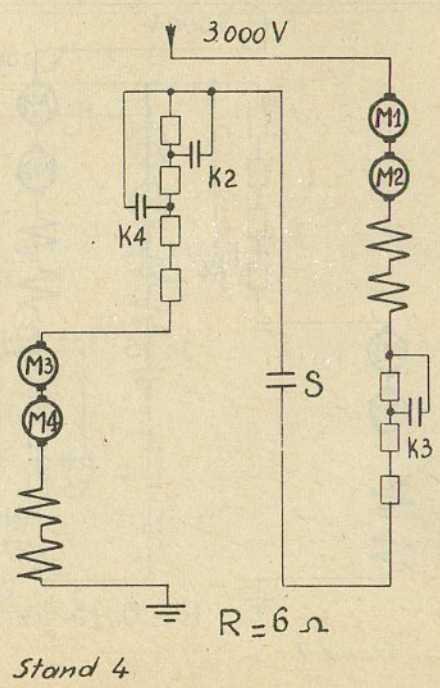
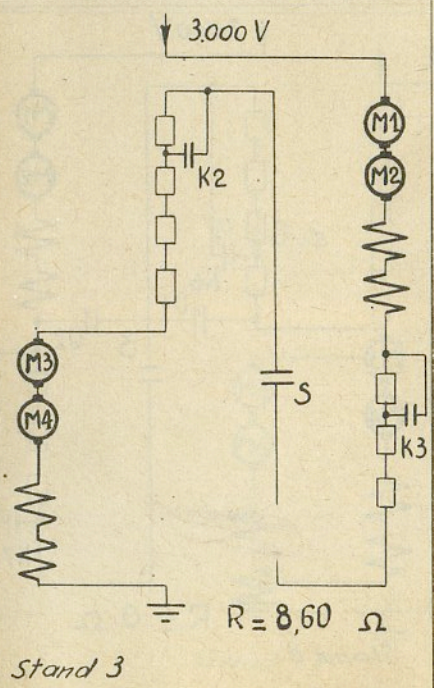
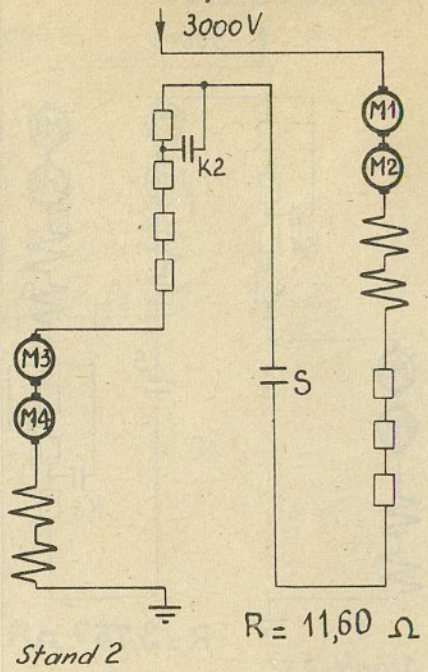
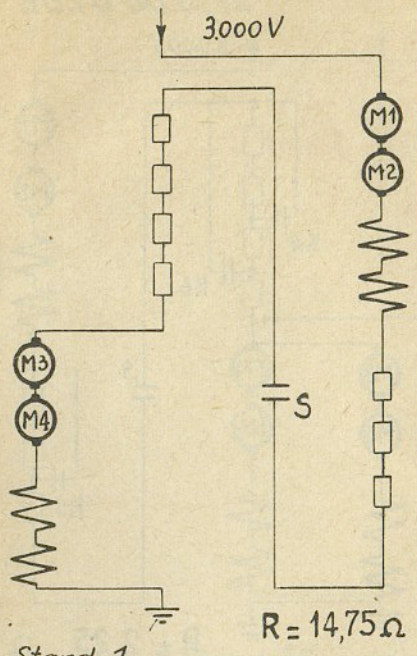
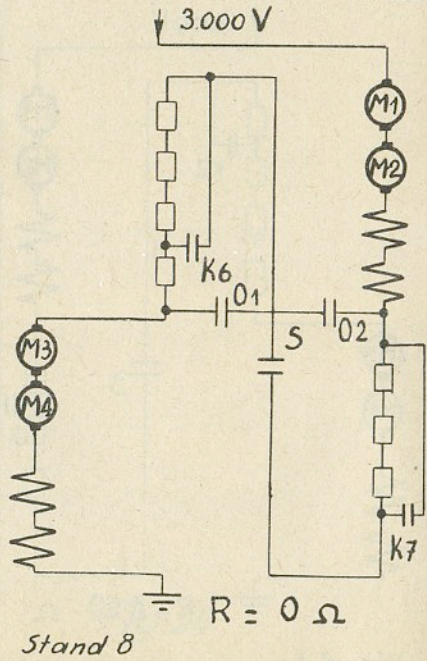
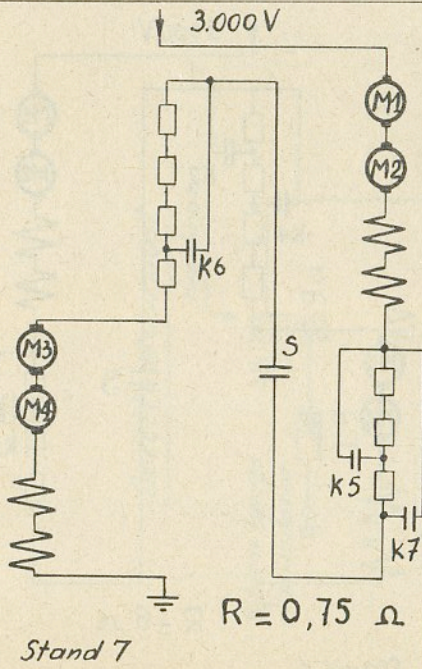
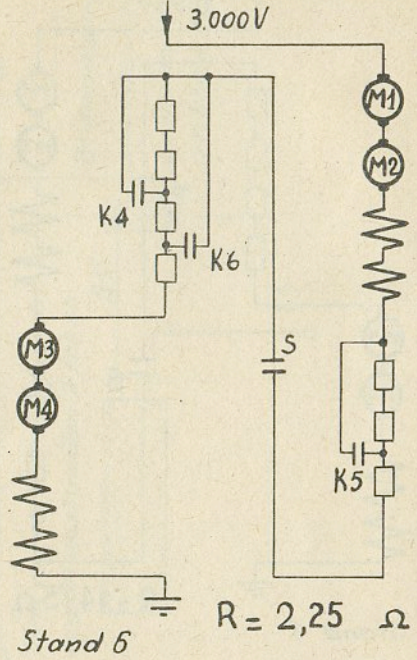
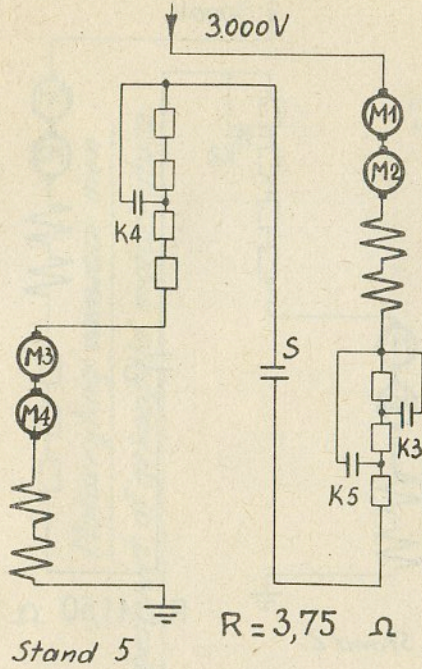


Fig. 36

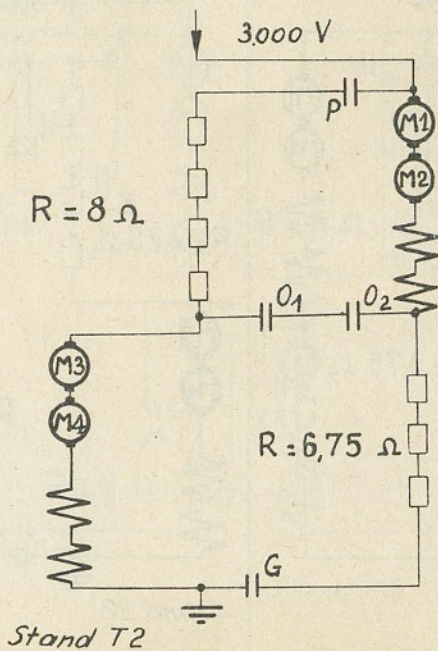
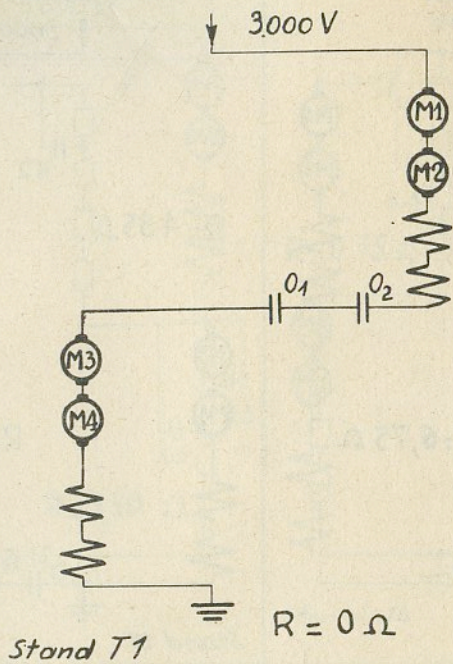


62/B.00.01.02

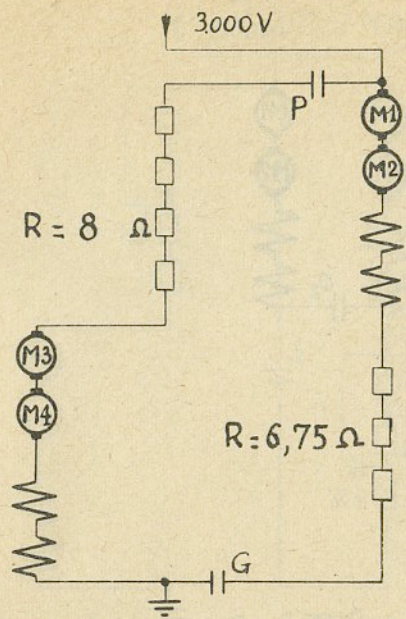




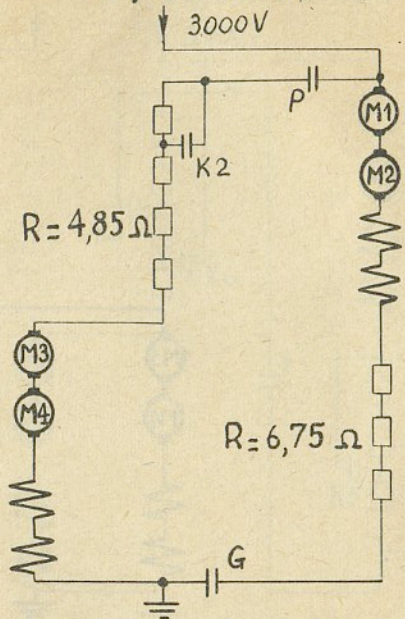
62/B.00.01.03



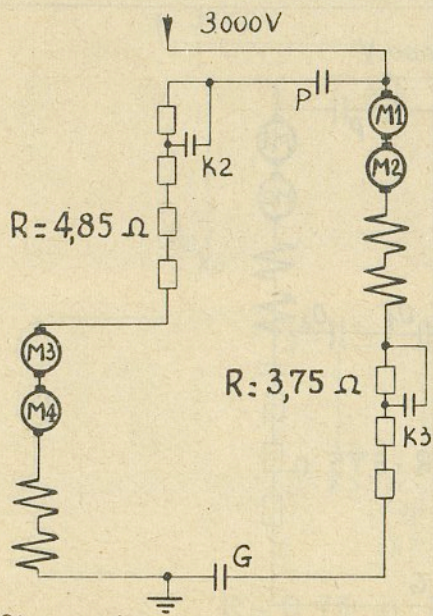
62/B.00.01.04



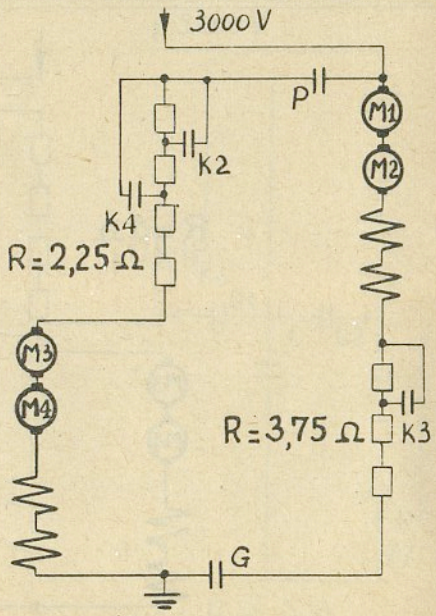
Stand 9



Stand 10

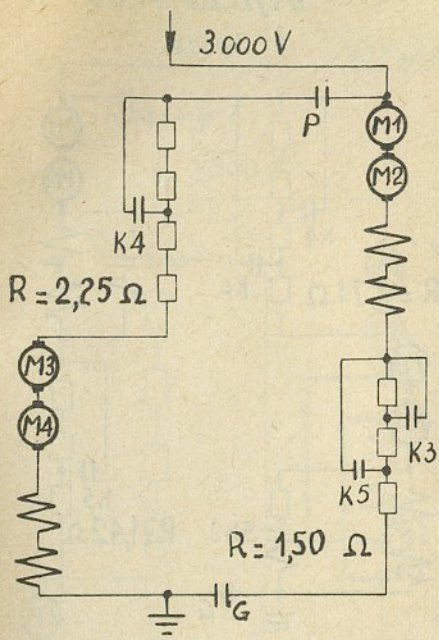


Stand 11

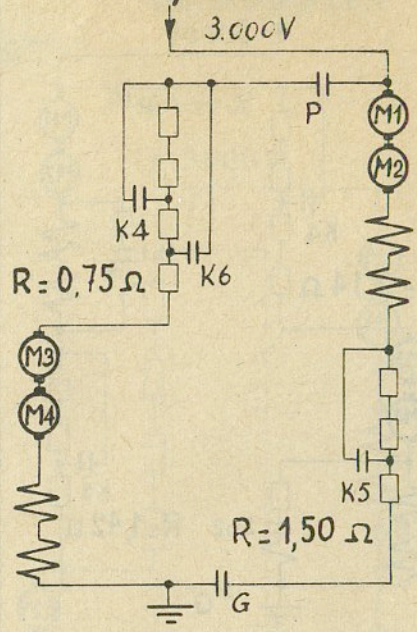


Stand 12

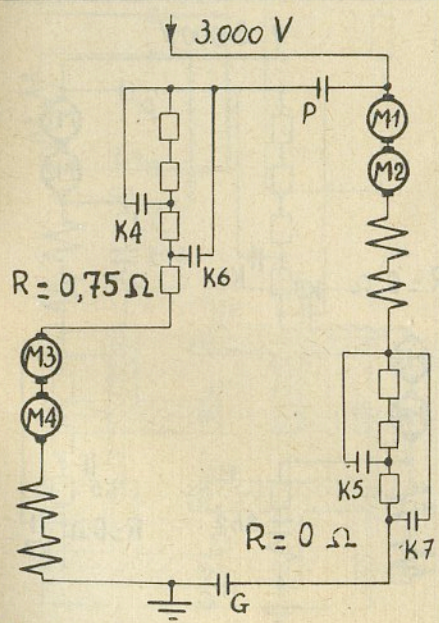
62/B.00.01.05



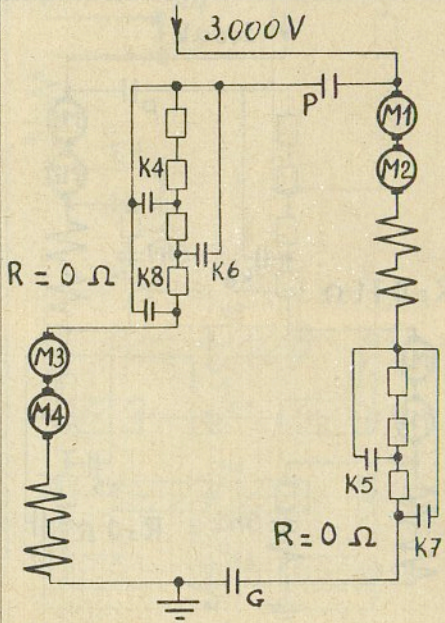
Stand 13



Stand 14

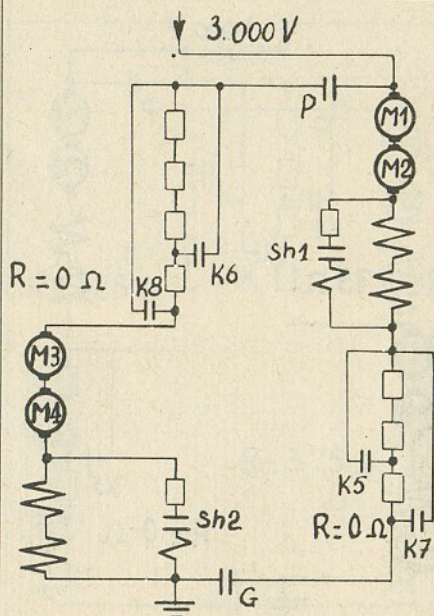
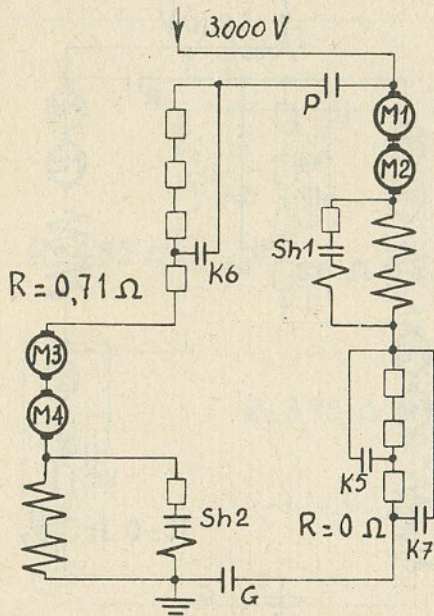
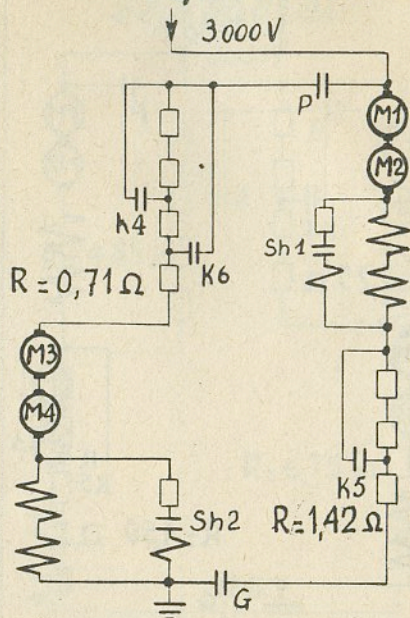
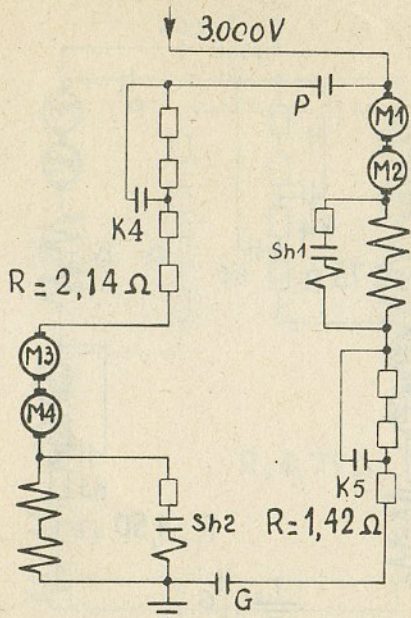


Stand 15



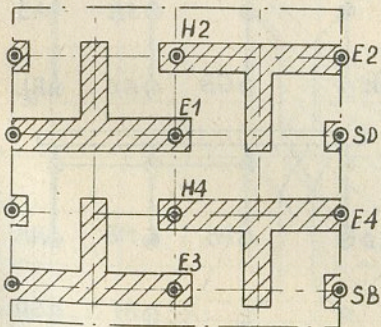
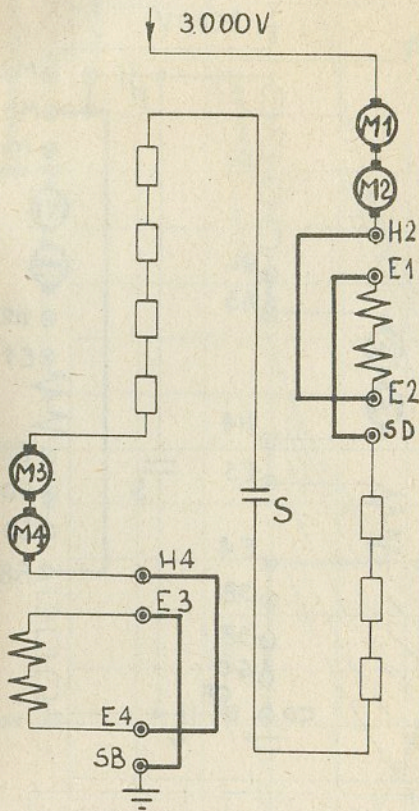
Stand 16

62/B.00.01.06

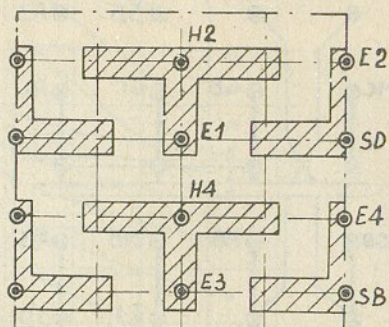
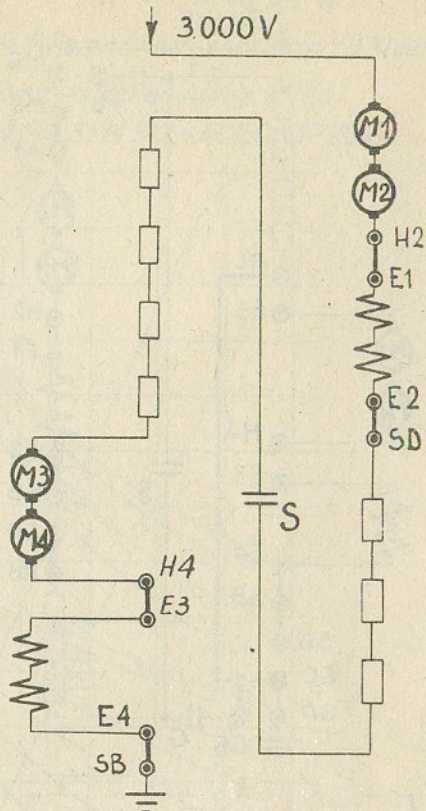


Ritwisselaar.

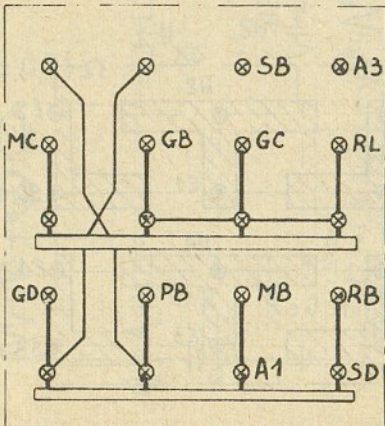
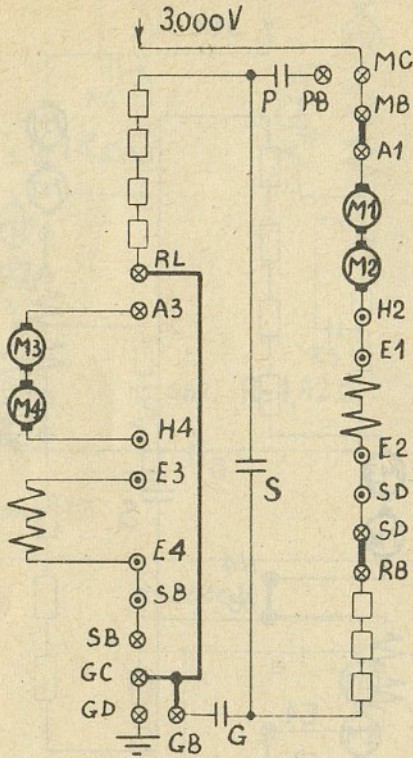
Richting I



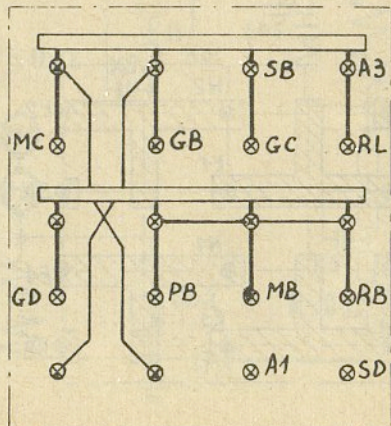
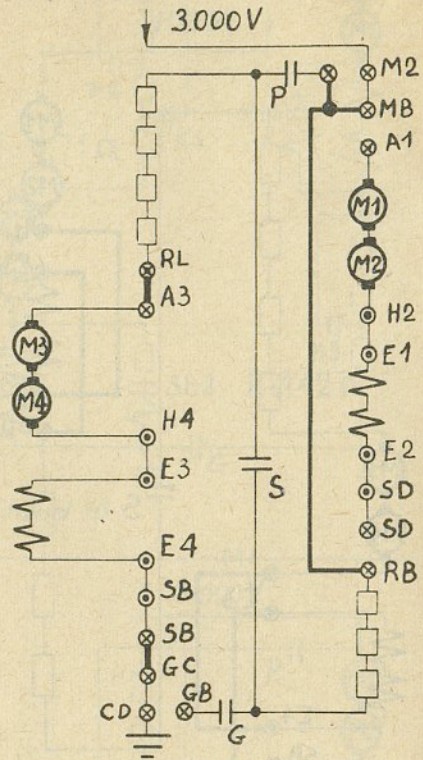
Richting II



Motoren 1 en 2 in dienst



Motoren 3 en 4 in dienst.



62/F.02.01.11

Motorrijt. 1962-3000/2 V.

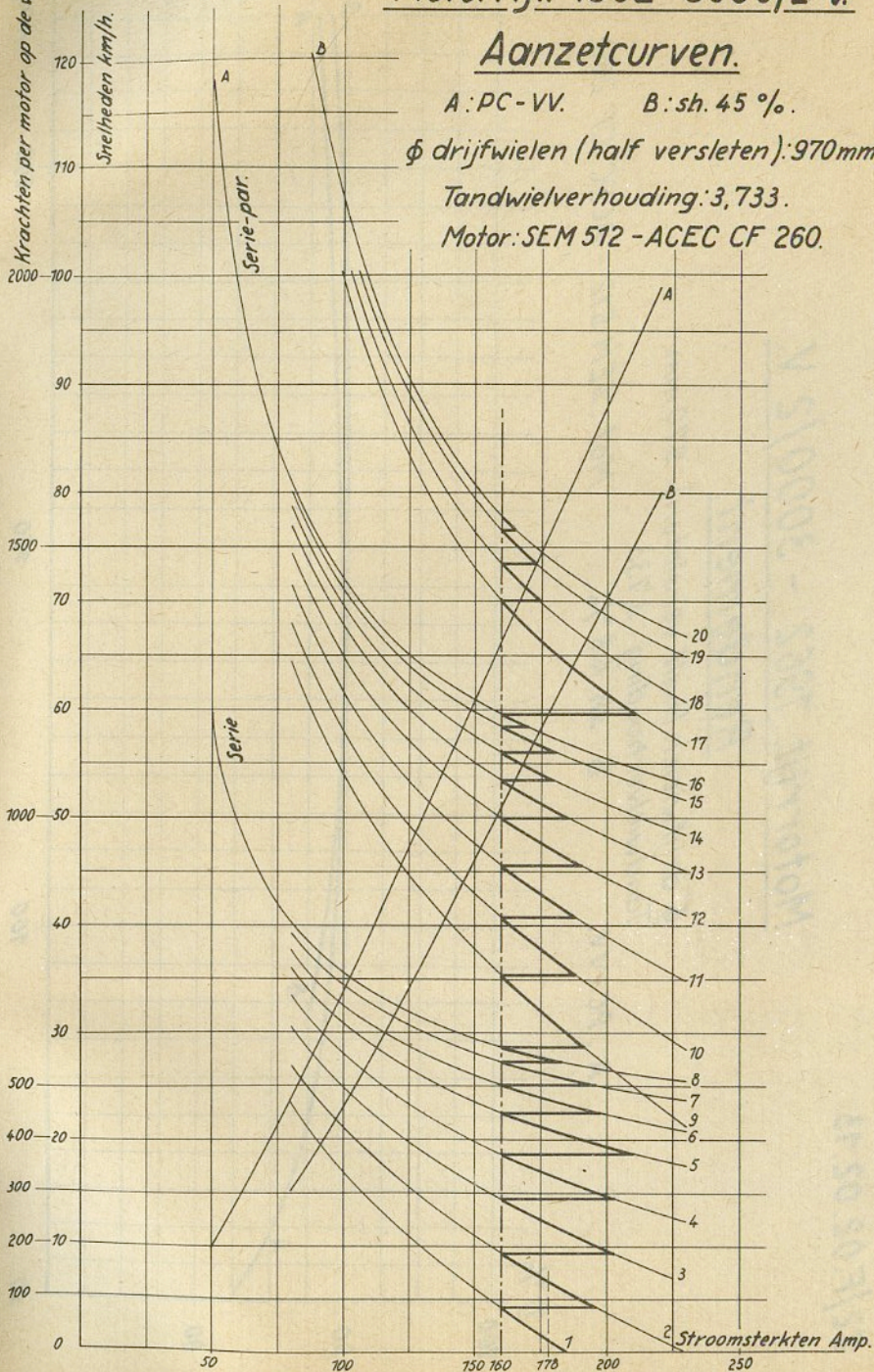
### Aanzetcurven.

A: PC-VV. B: sh. 45 %.

φ drijfwielen (half versleten): 970mm.

Tandwielverhouding: 3,733.

Motor: SEM 512 - ACEC CF 260.



62/F.02.02.13

Motorrijt 1962 - 3000/2 V.

Rendement.

∅ drijfwielen (half versleten) : 970 mm.

Tandwielverhouding : 3,733

A : PC-VV.

B : sh. 45 %.

Mot : SEM 512 - ACEC CF 260.

